

STOCKTON, CALIFORNIA

AL-407 (FAA)

RNAV (GPS) RWY 11L

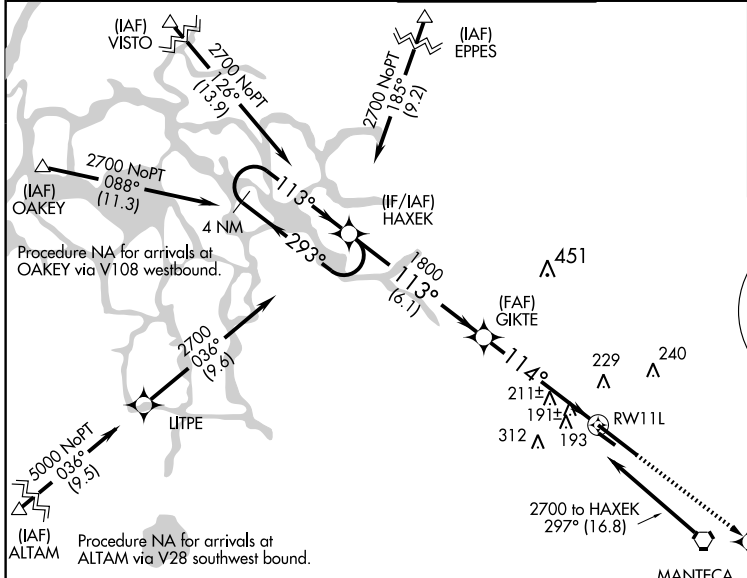
STOCKTON METROPOLITAN (SCK)

WAAS CH 72910 W11A	APP CRS 114°	Rwy Idg TDZE 29 Apt Elev 33	8690
----------------------------------------	------------------------	-------------------------------------------------	-------------

▼ Baro-VNAV NA when using Modesto altimeter setting. For uncompensated Baro-VNAV systems, LNAV/VNAV NA below -15°C (5°F) or above 49°C (120°F).
 ▲ DME/DME-RNP-0.3 NA. When local altimeter setting not received, use Modesto altimeter setting: increase all DA 58 feet and LPV and LNAV/VNAV all Cats visibility ¼ mile; increase all MDA 60 feet and LNAV Cat C and circling Cat D visibility ¼ mile. VDP NA with Modesto altimeter setting.

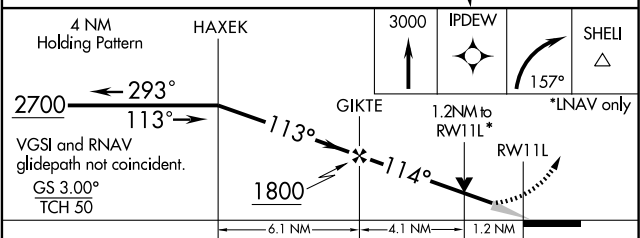
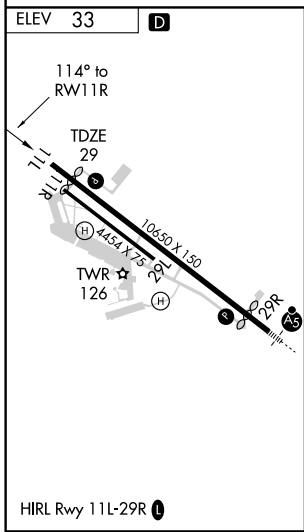
MISSED APPROACH: Climb to 3000 direct IPDEW and right turn via 157° track to SHELL and hold.

ATIS 118.25	NORCAL APP CON (SE-NW) 123.85 278.3 (N-SE) 125.1 363.2	STOCKTON TOWER * 120.3 (CTAF) 0 239.0	GND CON 121.9	UNICOM 122.95
-----------------------	----------------------------------------------------------------------------	-------------------------------------------------	-------------------------	-------------------------



SW-2, 22 OCT 2009 to 19 NOV 2009

SW-2, 22 OCT 2009 to 19 NOV 2009



CATEGORY	A	B	C	D
LPV DA		279- 3/4	250 (300-3/4)	
LNAV/VNAV DA		512-1 3/4	483 (500-1 3/4)	
LNAV MDA	480-1	451 (500-1)	480-1 1/4 451 (500-1 1/4)	480-1 1/2 451 (500-1 1/2)
CIRCLING	500-1 467 (500-1)	540-1 507 (600-1)	540-1 1/2 507 (600-1 1/2)	680-2 647 (700-2)

STOCKTON, CALIFORNIA
Orig 09071

37°54'N-121°14'W

STOCKTON METROPOLITAN (SCK)

RNAV (GPS) RWY 11L