

# RNAV (GPS) RWY 7

SPOKANE INTL (GEG)

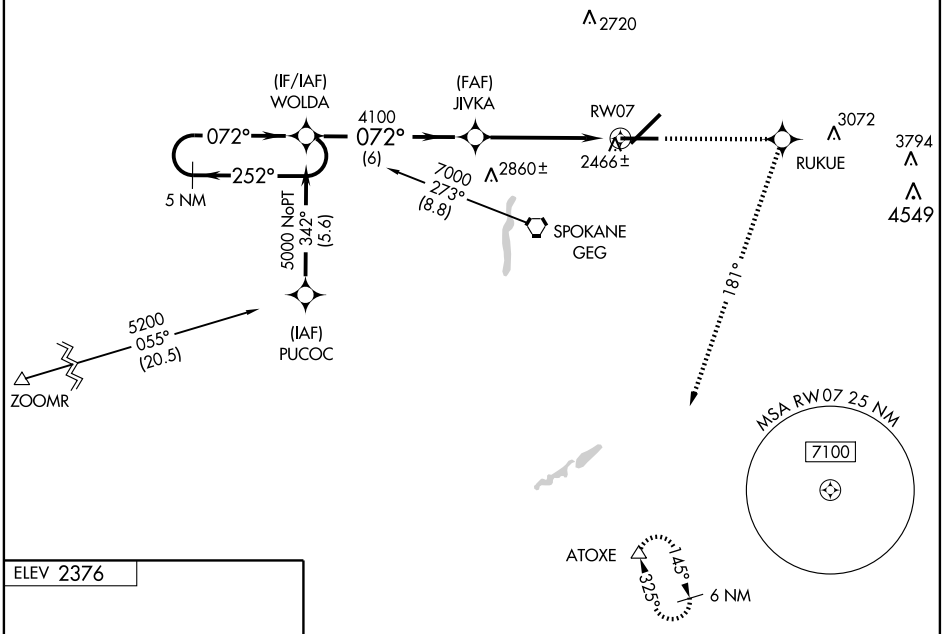
WAAS CH <b>48801</b> <b>W07A</b>	APP CRS <b>072°</b>	Rwy Idg TDZE Apt Elev	<b>8199</b> <b>2376</b> <b>2376</b>
--	------------------------	-----------------------------	---

▼ For uncompensated Baro-VNAV systems, LNAV/VNAV NA below -19°C (-2°F) or above 44°C (111°F).  
DME/DME RNP-0.3 NA.  
Visibility reduction by helicopters NA.

MISSED APPROACH: Climb to 6000 direct RUKUE and via 181° track to ATOXE and hold, continue climb-in-hold to 6000.

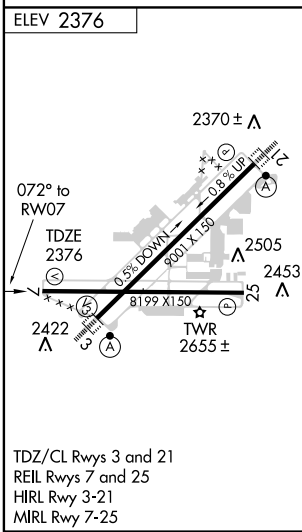
ATIS <b>124.325 254.375</b>	SPOKANE APP CON <b>123.75 282.25 (WEST)</b> <b>133.35 263.0 (EAST)</b>	SPOKANE TOWER <b>118.3 278.3</b>	GND CON <b>121.9 348.6</b>	CLNC DEL <b>127.55</b>
--------------------------------	--	-------------------------------------	-------------------------------	---------------------------

Procedure NA for arrivals at GEG VORTAC via V120 northbound.



NW-1, 22 OCT 2009 to 19 NOV 2009

NW-1, 22 OCT 2009 to 19 NOV 2009



5 NM Holding Pattern	WOLDA	6000	RUKUE	181° track	ATOXE
5000 ← 252°	→ 072°	JIVKA	*1.1 NM to RWY 7	*LNAV only	
GS 3.00°	TCH 60	4100	6 NM	4.1 NM	1.1
CATEGORY	A	B	C	D	
LPV DA	2626-1		250 (300-1)		
LNAV/VNAV DA	2786-1½		410 (500-1½)		
LNAV MDA	2800-1	424 (500-1)	2800-1¼	424 (500-1¼)	
CIRCLING	2960-1	584 (600-1)	2960-1½	2980-2	604 (700-2)