

RNAV (GPS) RWY 21

SPOKANE INTL (GEG)

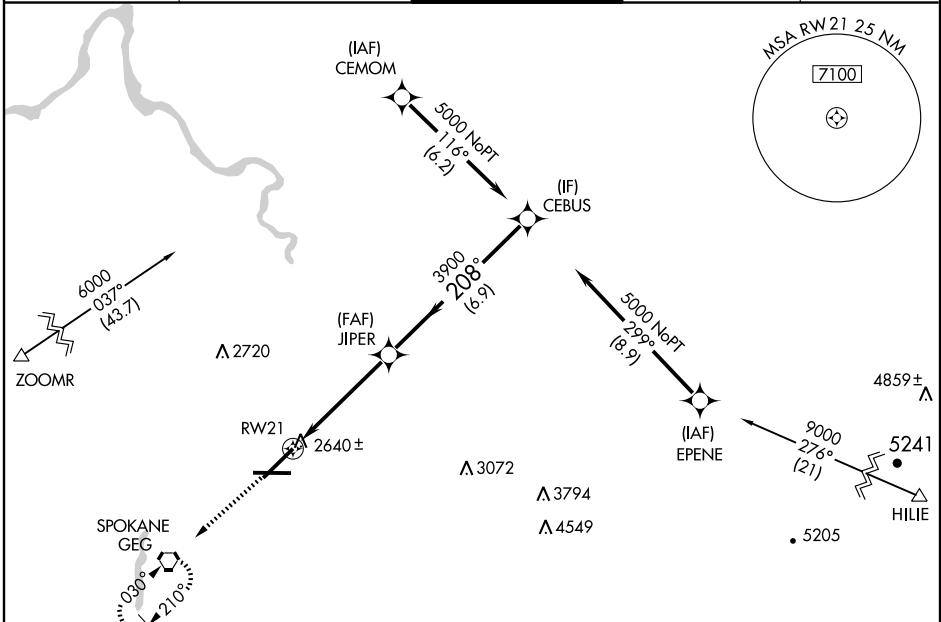
APP CRS 208°	Rwy Idg TDZE Apt Elev	9001 2346 2376
------------------------	-----------------------------	-------------------------------------------

▽ For uncompensated Baro-VNAV systems, LNAV/VNAV NA below -19°C (-2°F) or above 44°C (111°F).
DME/DME RNP-0.3 NA.



MISSED APPROACH: Climb to 4200 direct GEG VORTAC and hold.

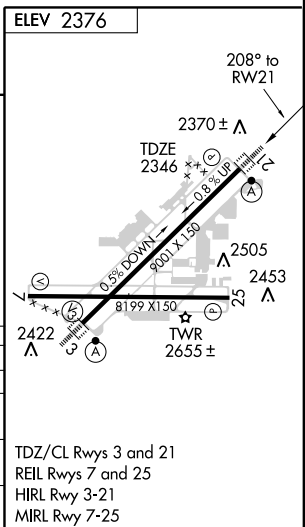
ATIS 124.325 254.375	SPOKANE APP CON 123.75 282.25 (WEST) 133.35 263.0 (EAST)	SPOKANE TOWER 118.3 278.3	GND CON 121.9 348.6	CLNC DEL 127.55
--------------------------------	------------------------------------------------------------------------------	-------------------------------------	-------------------------------	---------------------------



NW-1, 22 OCT 2009 to 19 NOV 2009

NW-1, 22 OCT 2009 to 19 NOV 2009

4200	GEG	VGSI and RNAV glidepath not coincident.		
*LNAV only				
CATEGORY	A	B	C	D
GLS PA DA	NA			
LNAV/VNAV DA	2720/50		374 (400-1)	
LNAV MDA	2800/24	454 (500-½)	2800/40	2800/50
CIRCLING	2960-1	2960-1	2960-1½	2980-2
	584 (600-1)	584 (600-1)	584 (600-1½)	604 (700-2)



TDZ/CL Rwys 3 and 21
REIL Rwys 7 and 25
HIRL Rwy 3-21
MIRL Rwy 7-25