

# ILS or LOC/DME RWY 21

SPOKANE INTL (GEG)

LOC/DME I-GEG <b>111.1</b> Chan 48	APP CRS <b>208°</b>	Rwy Idg <b>9001</b> TDZE <b>2346</b> Apt Elev <b>2376</b>
--	------------------------	---

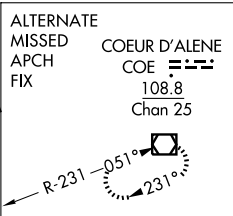
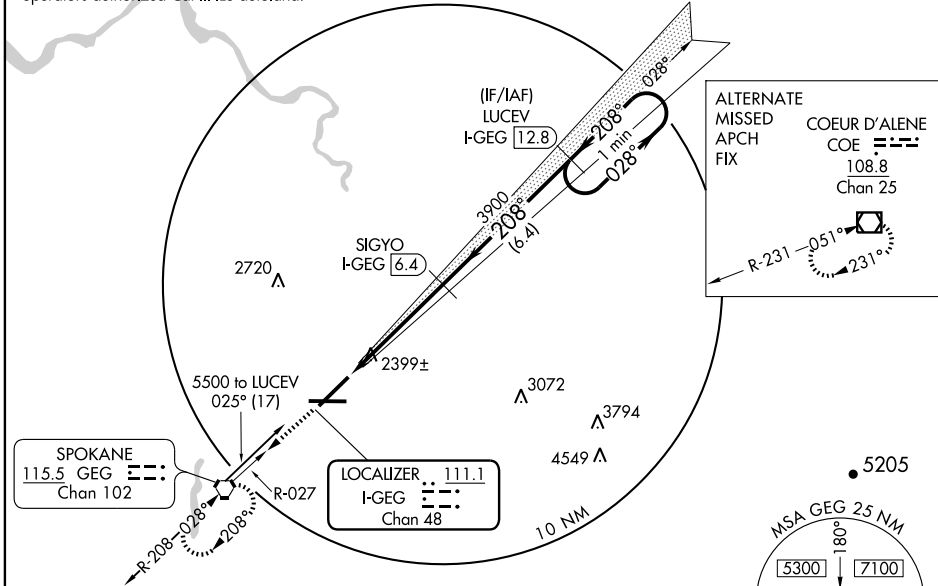
**⚠** For inoperative ALSF, increase S-LOC 21 Cat D visibility to 1.



**MISSED APPROACH:** Climb to 4200 via GEG VORTAC R-027 to GEG VORTAC and hold.

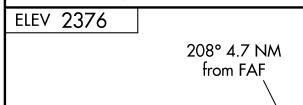
ATIS <b>124.325 254.375</b>	SPOKANE APP CON <b>123.75 282.25 (WEST)</b> <b>133.35 263.0 (EAST)</b>	SPOKANE TOWER <b>118.3 278.3</b>	GND CON <b>121.9 348.6</b>	CLNC DEL <b>127.55</b>
--------------------------------	--	-------------------------------------	-------------------------------	---------------------------

Autoland NA when weather below 300/1 except for operators authorized Cat III ILS autoland.

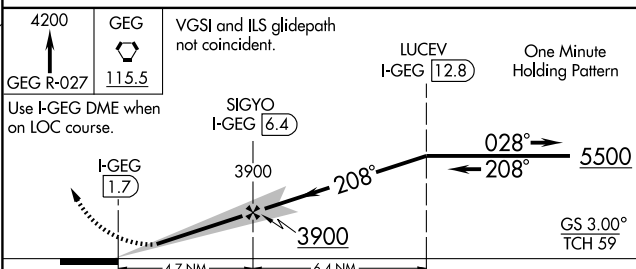


NW-1, 22 OCT 2009 to 19 NOV 2009

NW-1, 22 OCT 2009 to 19 NOV 2009



## DME REQUIRED



CATEGORY	A	B	C	D
S-ILS 21	2546/18 200 (200-1/2)			
S-LOC 21	2680/24	334 (400-1/2)	2680/40 334 (400-3/4)	
CIRCLING	2960-1	584 (600-1)	2960-1 1/2 584 (600-1/2)	2980-2 604 (700-2)

TDZ/CL Rwy 3 and 21  
REIL Rwy 7 and 25  
HIRL Rwy 3-21  
MIRL Rwy 7-25