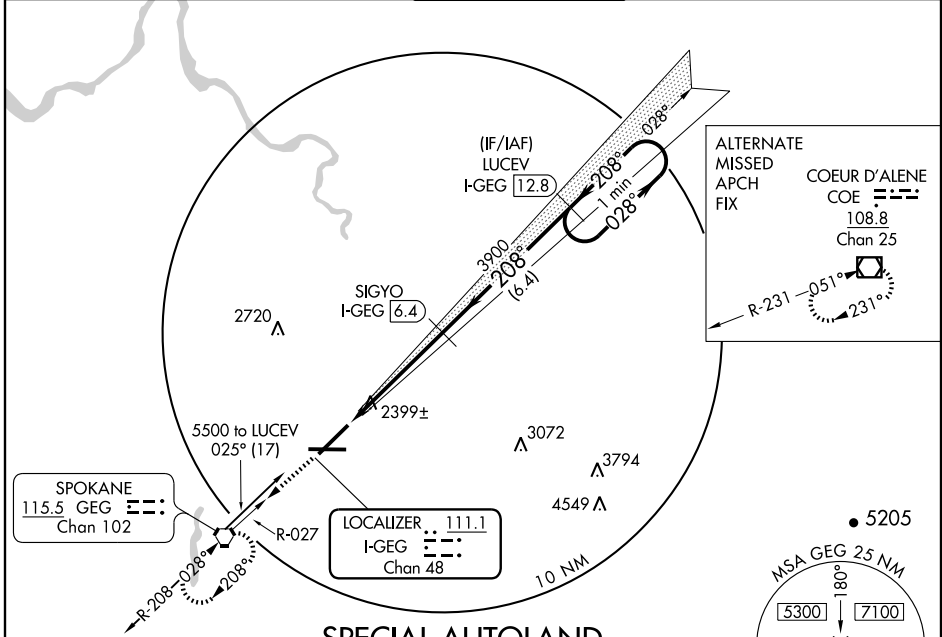


**ILS RWY 21 (CAT III)**  
SPOKANE INTL (GEG)

LOC/DME I-GEG <b>111.1</b> Chan 48	APP CRS <b>208°</b>	Rwy Idg TDZE Apt Elev	<b>9001</b> <b>2346</b> <b>2376</b>
--	------------------------	-----------------------------	---

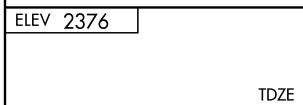
	ALS-F-2 	MISSED APPROACH: Climb to 4200 via GEG VORTAC R-027 to GEG VORTAC and hold.

ATIS <b>124.325 254.375</b>	SPOKANE APP CON <b>123.75 282.25 (WEST)</b> <b>133.35 263.0 (EAST)</b>	SPOKANE TOWER <b>118.3 278.3</b>	GND CON <b>121.9 348.6</b>	CLNC DEL <b>127.55</b>
--------------------------------	--	-------------------------------------	-------------------------------	---------------------------

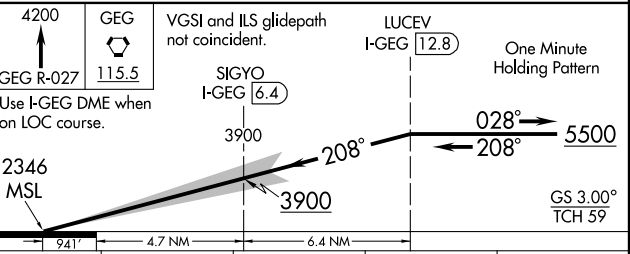
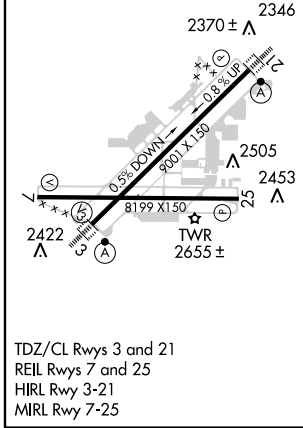


NW-1, 22 OCT 2009 to 19 NOV 2009

NW-1, 22 OCT 2009 to 19 NOV 2009



**SPECIAL AUTOLAND  
EVALUATION REQUIRED  
DME REQUIRED**



CATEGORY	A	B	C	D
S-ILS 21		CAT IIIA	RVR 07	
S-ILS 21		CAT IIIB	RVR 06	
S-ILS 21		CAT IIIC	NA	

**CATEGORY III ILS - SPECIAL AIRCREW  
& AIRCRAFT CERTIFICATION REQUIRED**