

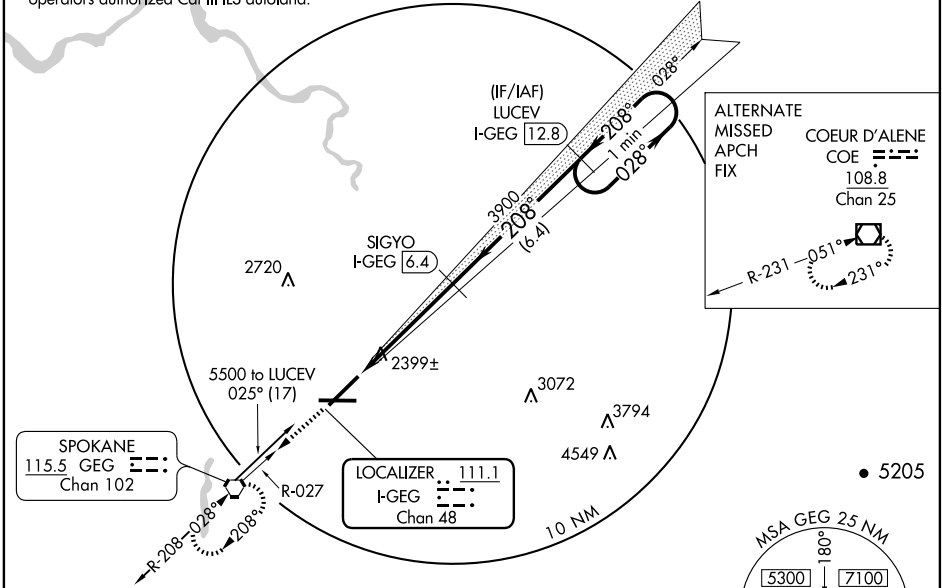
# ILS RWY 21 (CAT II)

SPOKANE INTL (GEG)

LOC/DME I-GEG <b>111.1</b> Chan 48	APP CRS <b>208°</b>	Rwy Idg TDZE Apt Elev	<b>9001</b> <b>2346</b> <b>2376</b>
--	------------------------	-----------------------------	---

	ALS-2 	MISSED APPROACH: Climb to 4200 via GEG VORTAC R-027 to GEG VORTAC and hold.		
	ATIS <b>124.325 254.375</b>	SPOKANE APP CON <b>123.75 282.25 (WEST)</b> <b>133.35 263.0 (EAST)</b>	SPOKANE TOWER <b>118.3 278.3</b>	GND CON <b>121.9 348.6</b>

Autoland NA when weather below 300/1 except for operators authorized Cat III ILS autoland.



ALTERNATE MISSED APCH FIX

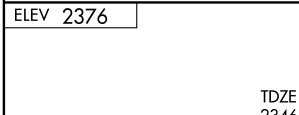
COEUR D'ALENE COE

108.8  
Chan 25

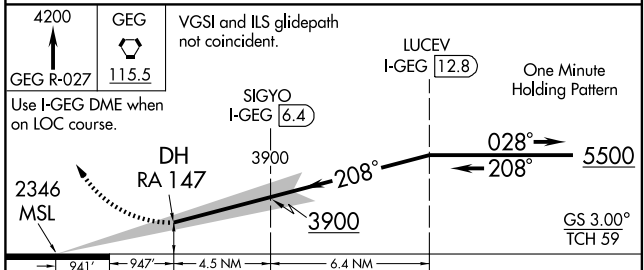
R-231-051°  
231°

NW-1, 22 OCT 2009 to 19 NOV 2009

NW-1, 22 OCT 2009 to 19 NOV 2009



## DME REQUIRED



CATEGORY	A	B	C	D
S-ILS 21	2446/16 100 RA 147			

**CATEGORY II ILS - SPECIAL AIRCREW & AIRCRAFT CERTIFICATION REQUIRED**

TDZ/CL Rwy 3 and 21  
REIL Rwy 7 and 25  
HIRL Rwy 3-21  
MIRL Rwy 7-25