

HILIE ONE ARRIVAL (HILIE.HILIE1)

ST-403 (FAA)

SPOKANE, WASHINGTON

600Z NOV 01 01 00Z 2002 10 OCT 22 '11 MW

SPOKANE APP CON
133.35 263.0
SPOKANE INTL ATIS
124.325 254.375
FELTS FIELD ATIS
120.55
FAIRCHILD ATIS
257.625

COEUR D'ALENE
108.8 COE
Chan 25

MULLAN PASS
117.8 MLP
Chan 125
N47°27.41' - W115°38.76'
L-13, H-1

SPOKANE
115.5 GEG
Chan 102
N47°33.90' - W117°37.61'

FAIRCHILD
Chan 51
SKA
(111.4)

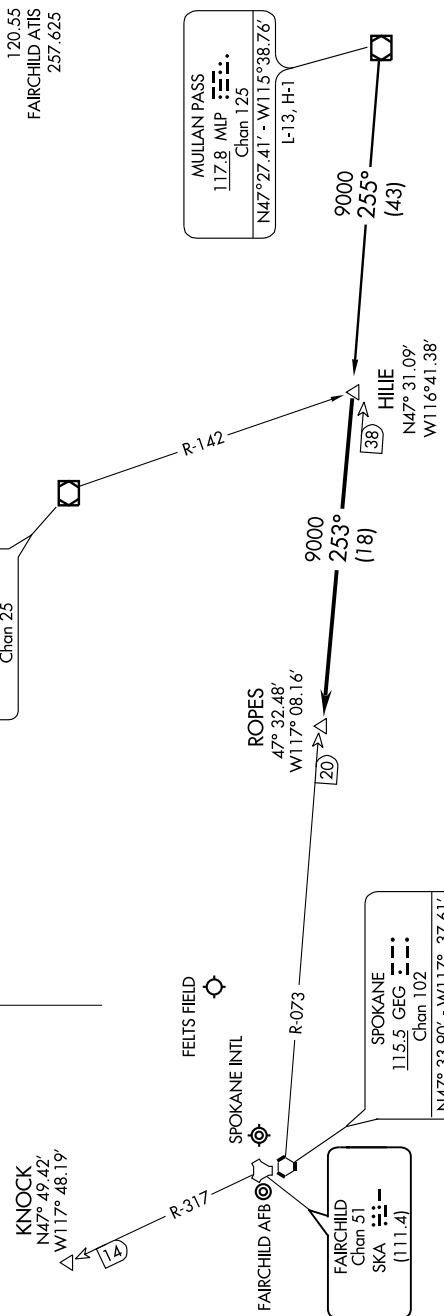


KNOCK
N47°49.42'
W117°48.19'

FELTS FIELD

SPOKANE INTL

FAIRCHILD AFB



NOTE: DME and RADAR required.
NOTE: Chart not to scale.

MULLAN PASS TRANSITION (MLP.HILIE1): From over MLP VOR/DME via MLP R-255 to HILIE INT. Thence

. . . . From over HILIE INT via GEG R-073 to ROPES INT. Expect radar vectors to final approach course.

LOST COMMUNICATIONS: After ROPES INT:
Landing Spokane Intl or Felts Field: Proceed to GEG VORTAC via GEG R-073, maintain last altitude to GEG.
Landing Fairchild AFB: Proceed to KNOCK DME via direct, maintain last assigned altitude to KNOCK.

HILIE ONE ARRIVAL (HILIE.HILIE1)

SPOKANE, WASHINGTON