

SPOKANE, WASHINGTON

AL-402 (FAA)

VORTAC GEG <b>115.5</b> Chan <b>102</b>	APP CRS <b>039°</b>	Rwy Idg TDZE <b>1945</b> Apt Elev <b>1953</b>	<b>4500</b>
---	------------------------	---	-------------

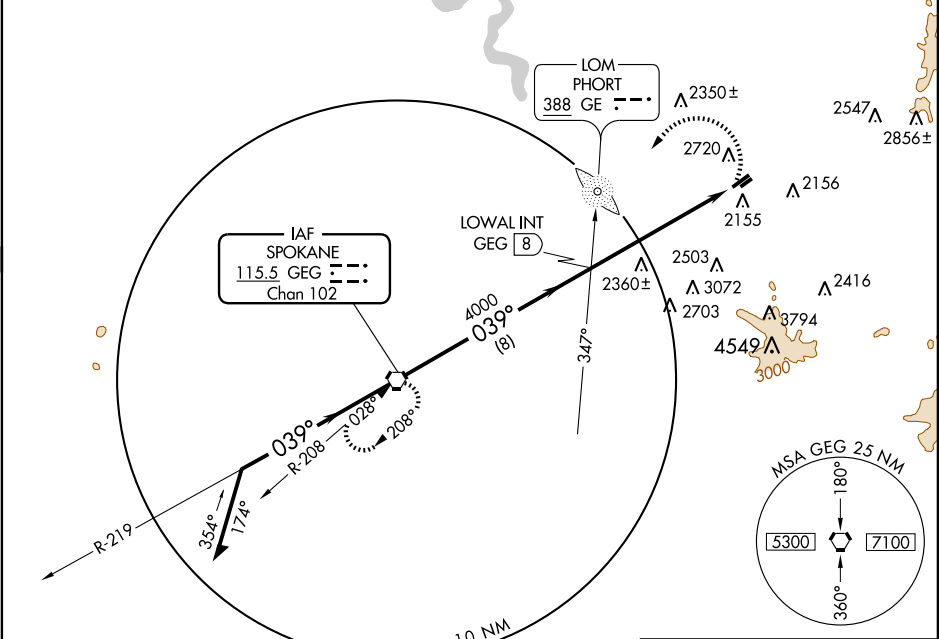
# VOR RWY 3L

SPOKANE / FELTS FIELD (S'F'F)

**⚠** Circling not authorized northwest of Rwy 3L-21R.

MISSED APPROACH: Climbing left turn to 4500 direct GEG VORTAC and hold.

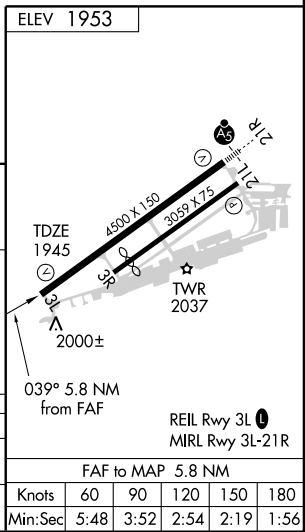
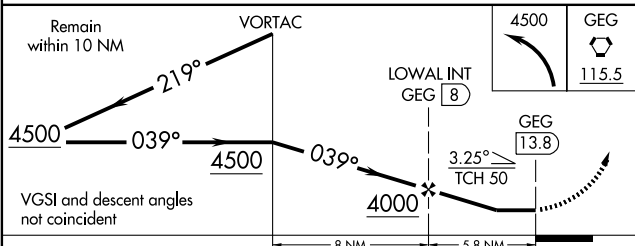
ATIS <b>120.55</b>	SPOKANE APP CON <b>133.35 263.0</b>	FELTS TOWER * <b>132.5 (CTAF) 239.025</b>	GND CON <b>121.7</b>	UNICOM <b>122.95</b>
-----------------------	--	--	-------------------------	-------------------------



NW-1, 22 OCT 2009 to 19 NOV 2009

NW-1, 22 OCT 2009 to 19 NOV 2009

## ADF or DME REQUIRED



CATEGORY	A	B	C	D
S-3L	2920-1¼ 975 (1000-1¼)	2920-1½ 975 (1000-1½)	2920-3	975 (1000-3)
CIRCLING	2920-1¼ 967 (1000-1¼)	2920-1½ 967 (1000-1½)	2920-3	967 (1000-3)

SPOKANE, WASHINGTON  
Amdt 3 09239

47°41'N - 117°19'W

SPOKANE / FELTS FIELD (S'F'F)  
**VOR RWY 3L**