

# RNAV (GPS) RWY 3L

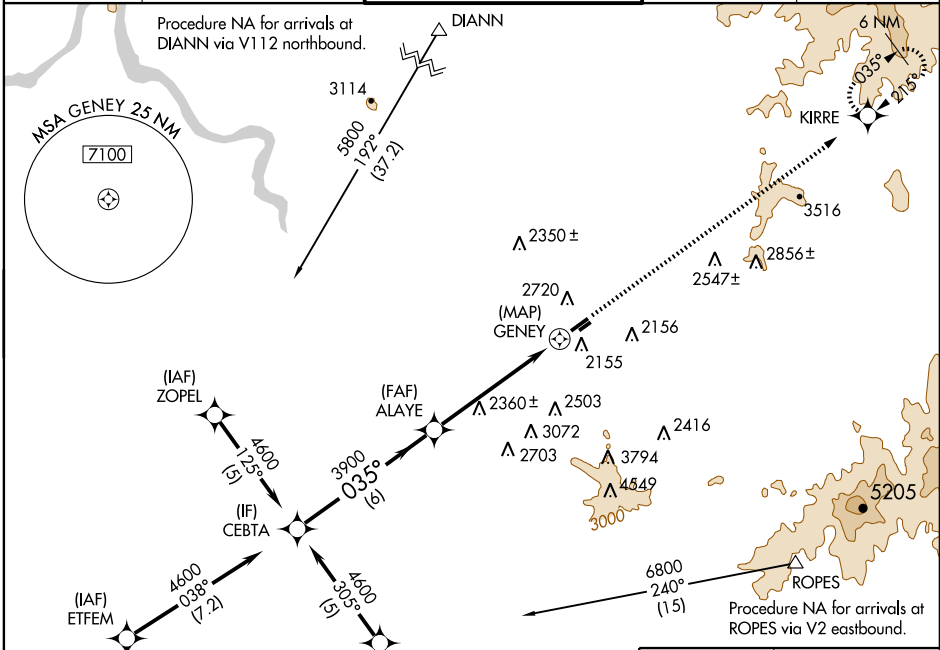
SPOKANE / FELTS FIELD (S'F'F)

APP CRS <b>035°</b>	Rwy Idg <b>4500</b>
	TDZE <b>1945</b>
	Apt Elev <b>1953</b>

**▽** Circling NA northwest of Rwy 3L-21R.  
**▲** Circling NA at right to Rwy 3R-21L.  
 DME/DME RNP- 0.3 NA.

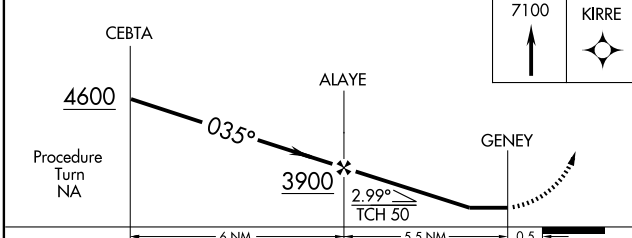
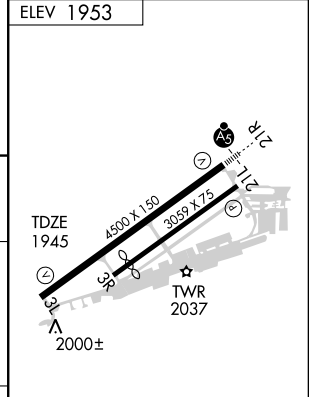
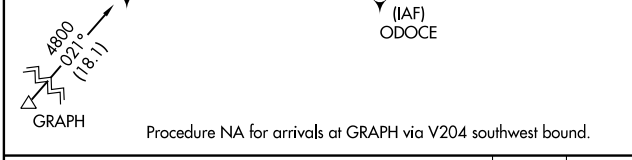
MISSED APPROACH: Climb to 7100 direct KIRRE and hold.

ATIS <b>120.55</b>	SPOKANE APP CON <b>133.35 263.0</b>	FELTS TOWER * <b>132.5 (CTAF) 0 239.025</b>	GND CON <b>121.7</b>	UNICOM <b>122.95</b>
-----------------------	--	--	-------------------------	-------------------------



NW-1, 22 OCT 2009 to 19 NOV 2009

NW-1, 22 OCT 2009 to 19 NOV 2009



CATEGORY	A	B	C	D
LN AV MDA	2880-1¼ 935 (1000-1¼)		2880-2¾ 935 (1000-2¾)	2880-3 935 (1000-3)
CIRCLING	2880-1¼ 927 (1000-1¼)		2880-2¾ 927 (1000-2¾)	2880-3 927 (1000-3)

REIL Rwy 3L 0  
 MRL Rwy 3L-21R