

ILS/DME RWY 21R

SPOKANE / FELTS FIELD (SF'F)

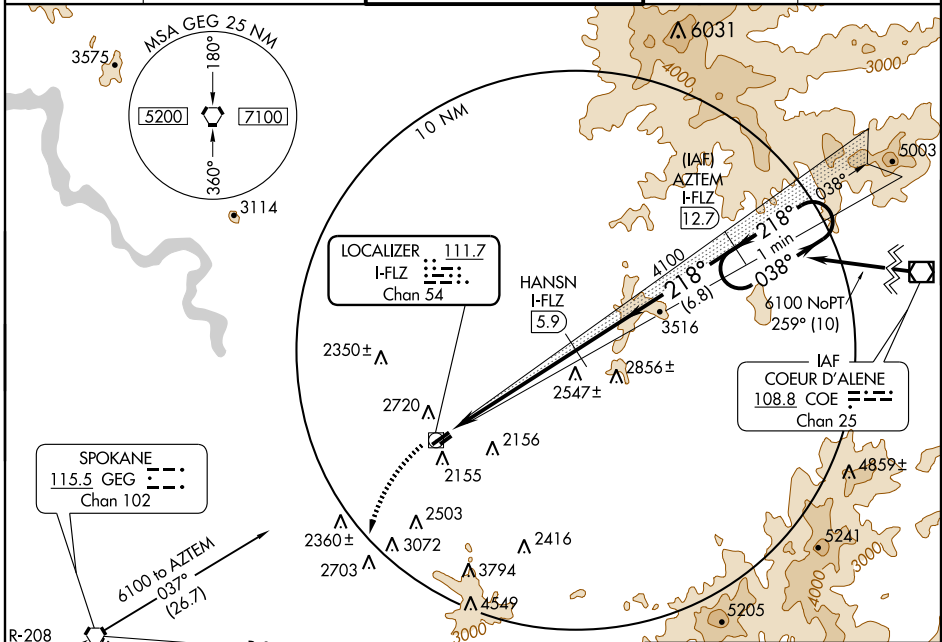
LOC/DME I-FLZ 111.7 Chan 54	APP CRS 218°	Rwy Idg TDZE Apt Elev	4500 1953 1953
---	------------------------	-----------------------------	---

⚠ Circling not authorized northwest of Rwy 3L-21R.
⚠ Inoperative table does not apply.



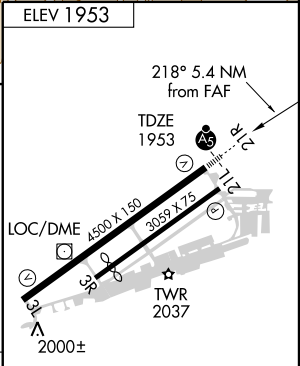
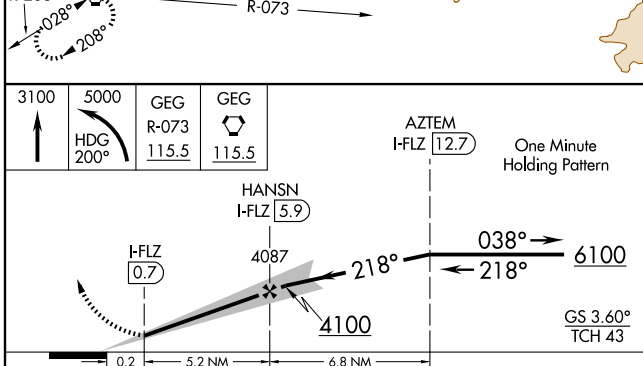
MISSED APPROACH: Climb to 3100 then climbing left turn to 5000 via heading 200° and GEG R-073 to GEG VORTAC and hold.

ATIS 120.55	SPOKANE APP CON 133.35 263.0	FELTS TOWER ★ 132.5 (CTAF) 239.025	GND CON 121.7	UNICOM 122.95
-----------------------	--	--	-------------------------	-------------------------



NW-1, 22 OCT 2009 to 19 NOV 2009

NW-1, 22 OCT 2009 to 19 NOV 2009



CATEGORY	A	B	C	D
S-ILS 21R	2223-¾	270 (300-¾)		NA
S-LOC 21R	2860-1¼	907 (1000-1¼)	2860-2¾ 907 (1000-2¾)	NA
CIRCLING	2860-1¼	907 (1000-1¼)	2860-2¾ 907 (1000-2¾)	NA

REIL Rwy 3L **⓪**
MIRL Rwy 3L-21R