

RNAV (GPS) RWY 9R

SOUTH BEND RGNL (SBN)

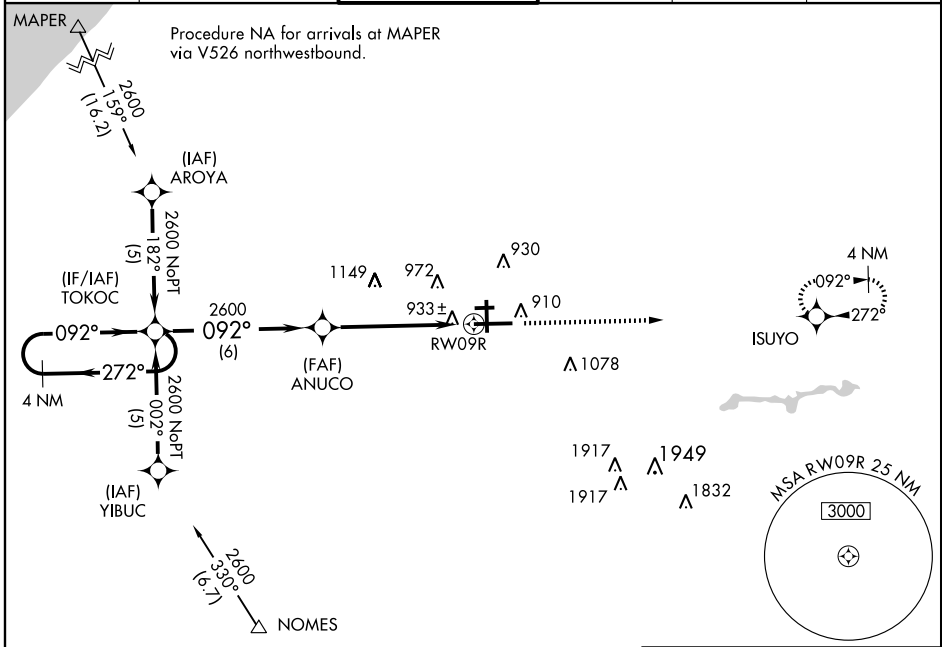
WAAS CH 60908 W09A	APP CRS 092°	Rwy Idg 8414 TDZE 790 Apt Elev 799
--	------------------------	---

▼ Baro-VNAV NA below -16°C (4°F). DME/DME RNP-0.3 NA.
When VGSi inoperative, circling Rwy 27R NA at night. Inoperative table does not apply to LPV and LNAV/VNAV all Cats and LNAV Cat C.



MISSED APPROACH: Climb to 2600 direct ISUYO WP and hold.

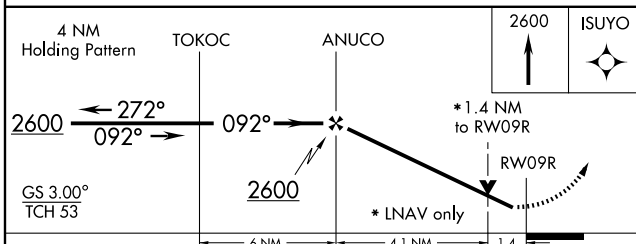
ATIS 118.15	SOUTH BEND APP CON * 118.55 257.8	SOUTH BEND TOWER * 118.9 (CTAF) 257.8	GND CON 121.7	CLNC DEL 121.9	UNICOM 122.95
-----------------------	---	--	-------------------------	--------------------------	-------------------------



EC-2, 22 OCT 2009 to 19 NOV 2009

EC-2, 22 OCT 2009 to 19 NOV 2009

Procedure NA for arrivals at NOMES via V8-92-126 eastbound and V156 southwestbound.



CATEGORY	A	B	C	D
LPV DA	1190-1½ 400 (400-1½)			
LNAV/VNAV DA	1280-1¾ 490 (500-1¾)			
LNAV MDA	1280-¾ 490 (500-¾)	1280-1¼ 490 (500-1¼)	1280-1½ 490 (500-1½)	
CIRCLING	1280-1¾ 481 (500-1¾)			1360-2 561 (600-2)

