

RNAV (GPS) RWY 36

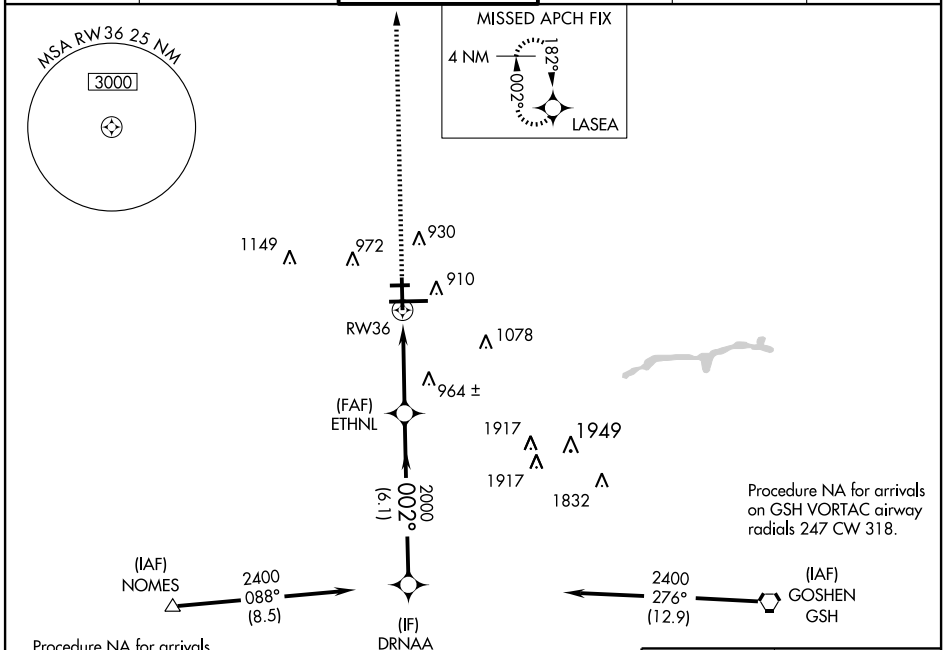
SOUTH BEND RGNL (SBN)

WAAS CH 69514 W36A	APP CRS 002°	Rwy Idg TDZE Apt Elev	7100 778 799
--	------------------------	-----------------------------	---

⚠ For uncompensated Baro-VNAV systems, LNAV/VNAV NA below -16°C (4°F) or above 46°C (114°F).
⚠ DME/DME RNP-0.3 NA.

MISSED APPROACH: Climb to 2400 direct LASEA and hold.

ATIS 118.15	SOUTH BEND APP CON* 118.55 257.8	SOUTH BEND TOWER* 118.9 (CTAF) 257.8	GND CON 121.7	CLNC DEL 121.9	UNICOM 122.95
-----------------------	--	---	-------------------------	--------------------------	-------------------------

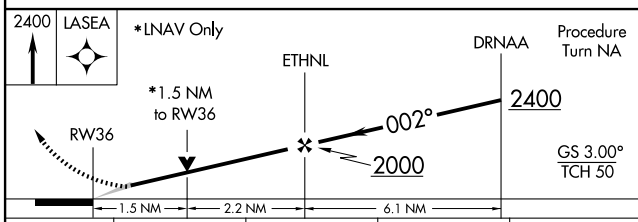


EC-2, 22 OCT 2009 to 19 NOV 2009

EC-2, 22 OCT 2009 to 19 NOV 2009



ELEV 799	D
HIRL Rwy 9R-27L	
MIRL Rwy 18-36 and 9L-27R	



CATEGORY	A	B	C	D
LPV DA	1028-1 250 (300-1)			
LNAV/DA	1230-1 ³ / ₄ 452 (500-1 ³ / ₄)			
LNAV MDA	1280-1 502 (500-1)	1280-1 ¹ / ₂ 502 (500-1 ¹ / ₂)		
CIRCLING	1280-1 481 (500-1)	1280-1 ¹ / ₂ 481 (500-1 ¹ / ₂)	1360-2 561 (600-2)	

