

SOUTH BEND, INDIANA

AL-399 (FAA)

# RNAV (GPS) RWY 27R

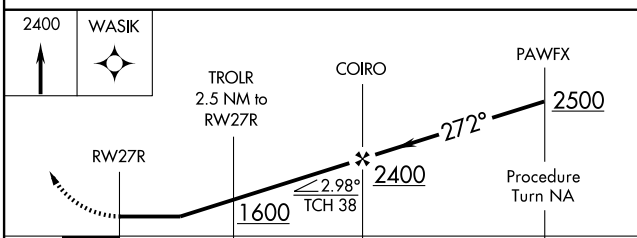
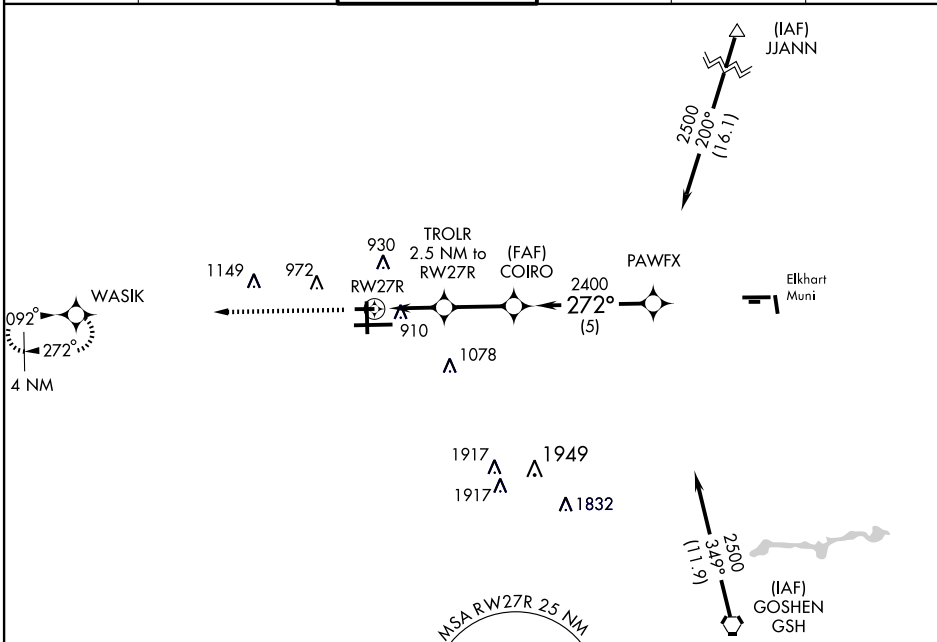
SOUTH BEND RGNL (SBN)

APP CRS	Rwy Idg	<b>4300</b>
<b>272°</b>	TDZE	<b>788</b>
	Apt Elev	<b>799</b>

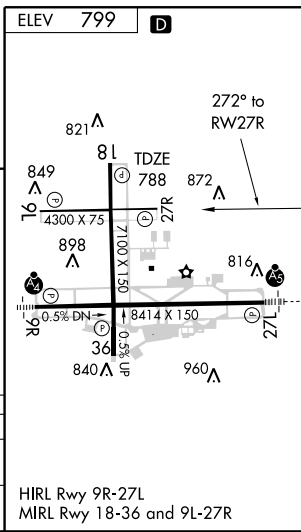
GPS or RNP-0.3 required.  
 DME/DME RNP-0.3 NA.  
 Straight-in minimums NA at night.

MISSED APPROACH: Climb to 2400 direct WASIK WP and hold.

ATIS <b>118.15</b>	SOUTH BEND APP CON* <b>118.55 257.8</b>	SOUTH BEND TOWER* <b>118.9 (CTAF) 257.8</b>	GND CON <b>121.7</b>	CLNC DEL <b>121.9</b>	UNICOM <b>122.95</b>
-----------------------	--	--	-------------------------	--------------------------	-------------------------



CATEGORY	A	B	C	D
LNAV MDA	1160-1	372 (400-1)		1160-1 1/4 372 (400-1 1/4)
CIRCLING	1260-1 461 (500-1)	1280-1 481 (500-1)	1280-1 1/2 481 (500-1 1/2)	1360-2 561 (600-2)



SOUTH BEND, INDIANA  
 Orig 09295

41°42'N - 86°19'W

# SOUTH BEND RGNL (SBN) RNAV (GPS) RWY 27R

EC-2, 22 OCT 2009 to 19 NOV 2009

EC-2, 22 OCT 2009 to 19 NOV 2009