

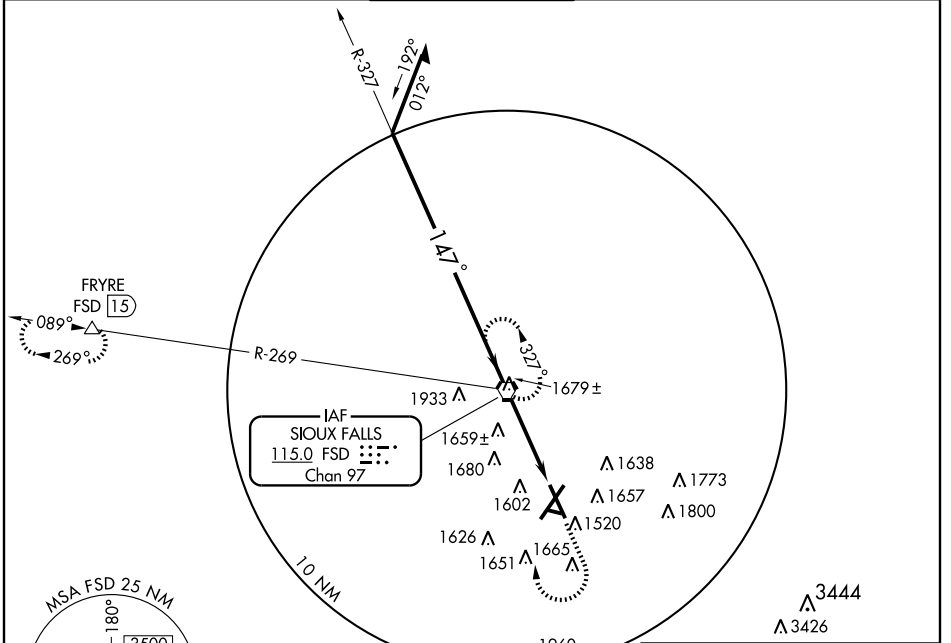
VOR or TACAN RWY 15

SIoux FALLS/JOE FOSS FIELD (F'SD)

VORTAC FSD 115.0 Chan 97	APP CRS 147°	Rwy Idg 8000 TDZE 1428 Apt Elev 1429
--	------------------------	---

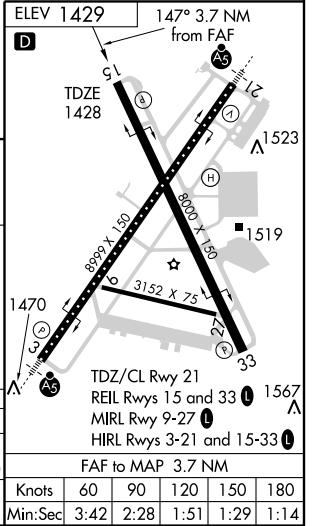
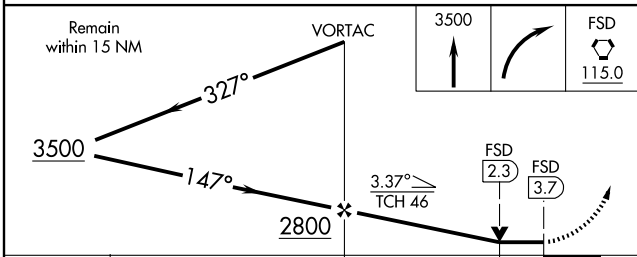
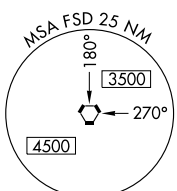
ASR MISSED APPROACH: Climb to 3500 then right turn direct FSD VORTAC and hold. (TACAN aircraft continue climb to 5000 via FSD R-269 to FRYRE 15 DME hold west, right turns, 089° inbound)

ATIS 126.6	SIoux FALLS APP CON* 125.8 353.6	SIoux FALLS TOWER* 118.3 (CTAF) 257.8	GND CON 121.9 348.6	UNICOM 122.95
----------------------	--	--	-------------------------------	-------------------------



NC-1, 22 OCT 2009 to 19 NOV 2009

NC-1, 22 OCT 2009 to 19 NOV 2009



CATEGORY	A	B	C	D	E
S-15	1920-1	492 (500-1)	1920-1¼ 492 (500-1¼)	1920-1½ 492 (500-1½)	1920-1¾ 492 (500-1¾)
CIRCLING	1960-1	531 (600-1)	1960-1½ 531 (600-1½)	2040-2 611 (700-2)	2300-3 871 (900-3)

FAF to MAP 3.7 NM					
Knots	60	90	120	150	180
Min:Sec	3:42	2:28	1:51	1:29	1:14