

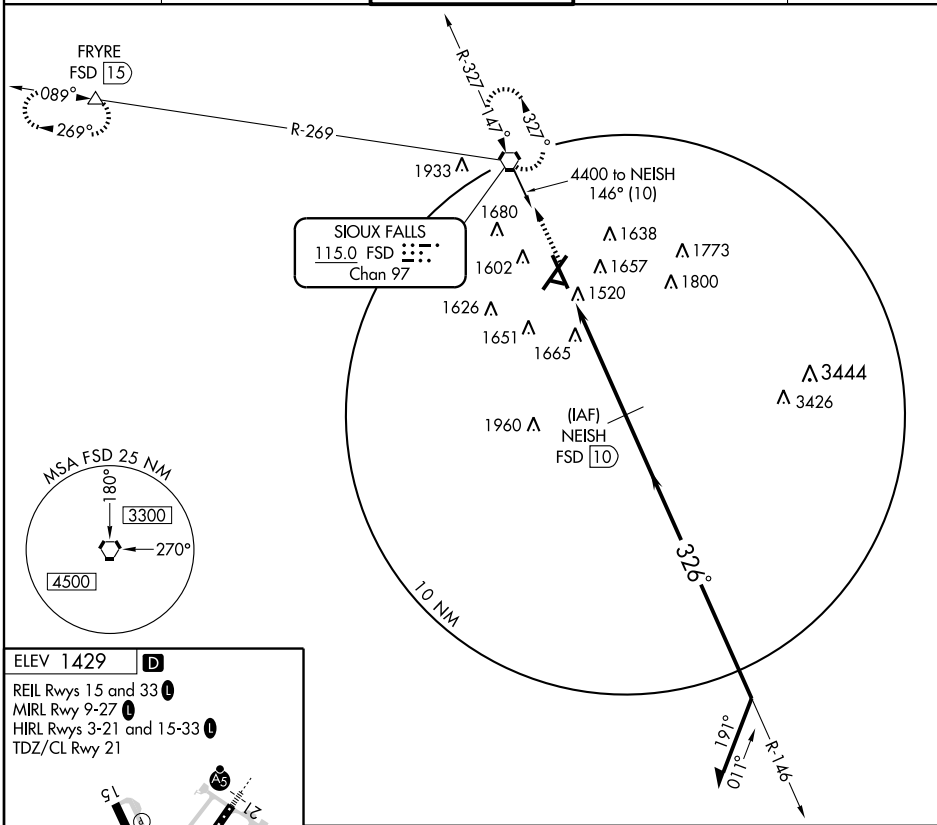
# VOR/DME or TACAN RWY 33

SIoux FALLS/JOE FOSS FIELD (FSD)

VORTAC FSD <b>115.0</b> Chan <b>97</b>	APP CRS <b>326°</b>	Rwy Idg <b>8000</b> TDZE <b>1423</b> Apt Elev <b>1429</b>
--	------------------------	---

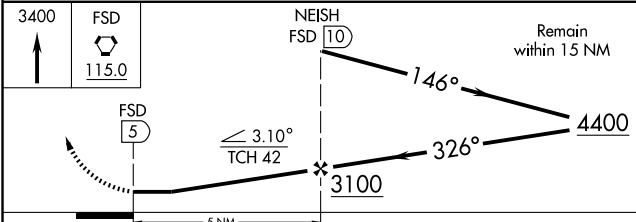
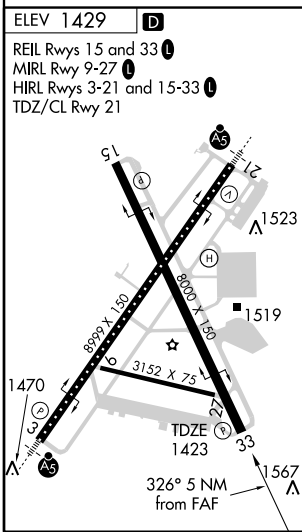
MISSED APPROACH: Climb to 3400 direct FSD VORTAC and hold. (TACAN aircraft continue climb to 5000 via FSD R-269 to FRYRE 15 DME and hold west, right turns, 089° inbound.)

ATIS <b>126.6</b>	SIoux FALLS APP CON* <b>125.8 353.6</b>	SIoux FALLS TOWER* <b>118.3 (CTAF) 257.8</b>	GND CON <b>121.9 348.6</b>	UNICOM <b>122.95</b>
----------------------	--	---	-------------------------------	-------------------------



NC-1, 22 OCT 2009 to 19 NOV 2009

NC-1, 22 OCT 2009 to 19 NOV 2009



CATEGORY	A	B	C	D	E
S-33	1940-1	517 (600-1)	1940-1½ 517 (600-1½)	1940-1¾	517 (600-1¾)
CIRCLING	1960-1	531 (600-1)	1960-1½ 531 (600-1½)	2040-2	2300-3 871 (900-3)