

RNAV (GPS) RWY 9

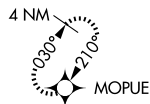
SIOUX FALLS/JOE FOSS FIELD (FSD)

APP CRS 098°	Rwy Idg 3152 TDZE 1423 Apt Elev 1429
------------------------	---

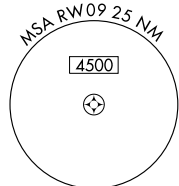
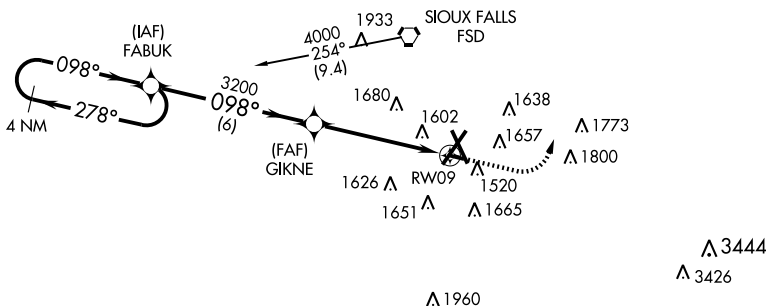
<p>▽ ▲ NA ASR</p>	DME/DME RNP- 0.3 NA.
---------------------------	----------------------

MISSED APPROACH: Climb to 2500 then climbing left turn to 4000 direct MOJUE WP and hold.

ATIS 126.6	SIOUX FALLS APP CON* 125.8 353.6	SIOUX FALLS TOWER* 118.3 (CTAF) 257.8	GND CON 121.9 348.6	UNICOM 122.95
----------------------	--	---	-------------------------------	-------------------------

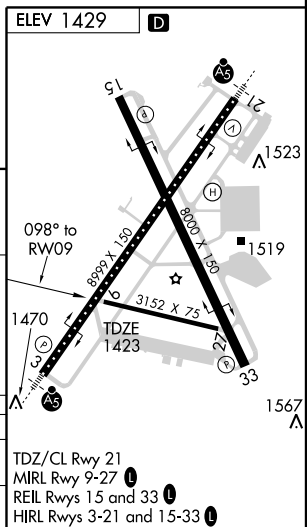
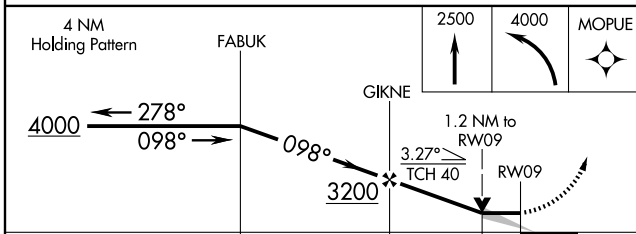


Procedure NA for arrivals on FSD VORTAC
airway radials 202 CW 297.



NC-1, 22 OCT 2009 to 19 NOV 2009

NC-1, 22 OCT 2009 to 19 NOV 2009



CATEGORY	A	B	C	D
LNAV MDA	1880-1	457 (500-1)		NA
CIRCLING	1960-1	531 (600-1)		NA