

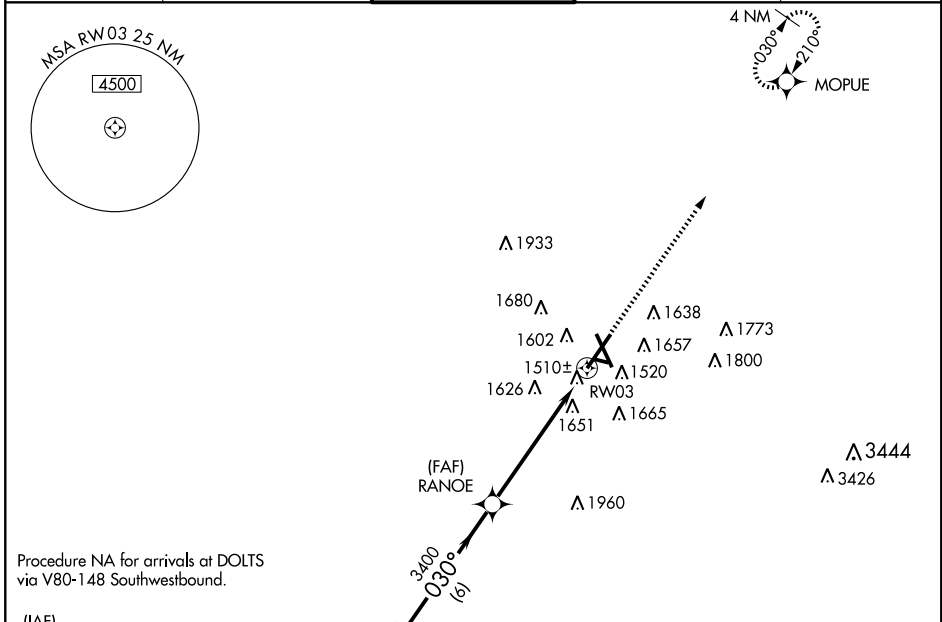
RNAV (GPS) RWY 3

SIOUX FALLS/JOE FOSS FIELD (FSD)

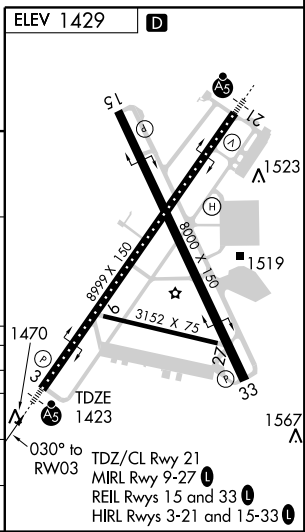
APP CRS 030°	Rwy Idg 8999 TDZE 1423 Apt Elev 1429
------------------------	---

<p>Baro-VNAV NA below -17°C (2°F). DME/DME RNP- 0.3 NA.</p>	<p>MALSR</p>	<p>MISSED APPROACH: Climb to 4000 direct MOPUE WP and hold.</p>
---	--------------	---

<p>ATIS 126.6</p>	<p>SIOUX FALLS APP CON* 125.8 353.6</p>	<p>SIOUX FALLS TOWER* 118.3 (CTAF) 257.8</p>	<p>GND CON 121.9 348.6</p>	<p>UNICOM 122.95</p>
------------------------------	--	---	---------------------------------------	---------------------------------



Procedure Turn NA	KASME	VGSI and descent angles not coincident.		4000	MOPUE
GS 3.00° TCH 54		RANOE			
	6 NM	4.5 NM	1.4 NM		
CATEGORY	A	B	C	D	
GLS PA DA	NA				
LNAV/VNAV DA	1760/40 337 (400-¾)				
LNAV MDA	1920/24	497 (500-½)	1920/40 497 (500-¾)	1920/50 497 (500-1)	
CIRCLING	1960-1¼	531 (600-1¼)	1960-1½ 531 (600-1½)	2040-2 611 (700-2)	



NC-1, 22 OCT 2009 to 19 NOV 2009

NC-1, 22 OCT 2009 to 19 NOV 2009