

ILS or LOC RWY 3
SIoux FALLS/JOE FOSS FIELD (F'SD)

LOC I-FSD 109.9	APP CRS 030°	Rwy Idg 8999	TDZE 1423
		Apt Elev 1429	

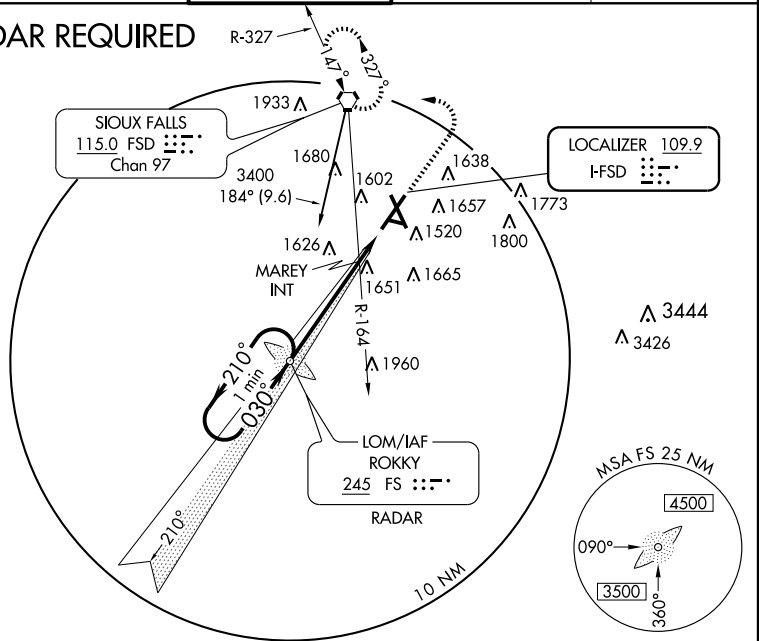
RVR 1800 authorized with use of FD or AP or HUD to DA.
ASR



MISSED APPROACH: Climb to 3400 then left turn direct FSD VORTAC and hold.

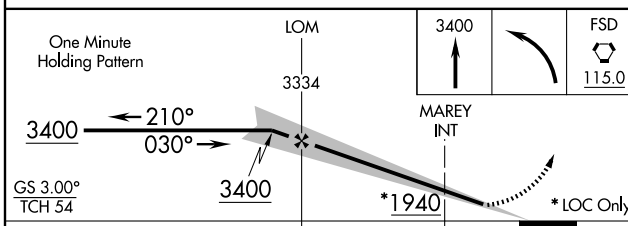
ATIS 126.6	SIoux FALLS APP CON* 125.8 353.6	SIoux FALLS TOWER* 118.3 (CTAF) 257.8	GND CON 121.9 348.6	UNICOM 122.95
----------------------	--	---	-------------------------------	-------------------------

ADF or RADAR REQUIRED

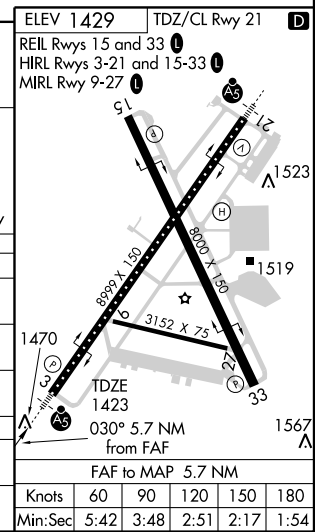


NC-1, 22 OCT 2009 to 19 NOV 2009

NC-1, 22 OCT 2009 to 19 NOV 2009



CATEGORY	A	B	C	D
S-ILS 3	# 1623/24 200 (200-½)			
S-LOC 3	1940/24	517 (600-½)	1940/50 517 (600-1)	1940/60 517 (600-1½)
CIRCLING	1960-1	531 (600-1)	1960-1½ 531 (600-1½)	2040-2 611 (700-2)
MAREY FIX MINIMUMS				
S-LOC 3	1780/24 357 (400-½)		1780/40 357 (400-¾)	
CIRCLING	1960-1	531 (600-1)	1960-1½ 531 (600-1½)	2040-2 611 (700-2)



Knots	60	90	120	150	180
Min:Sec	5:42	3:48	2:51	2:17	1:54