

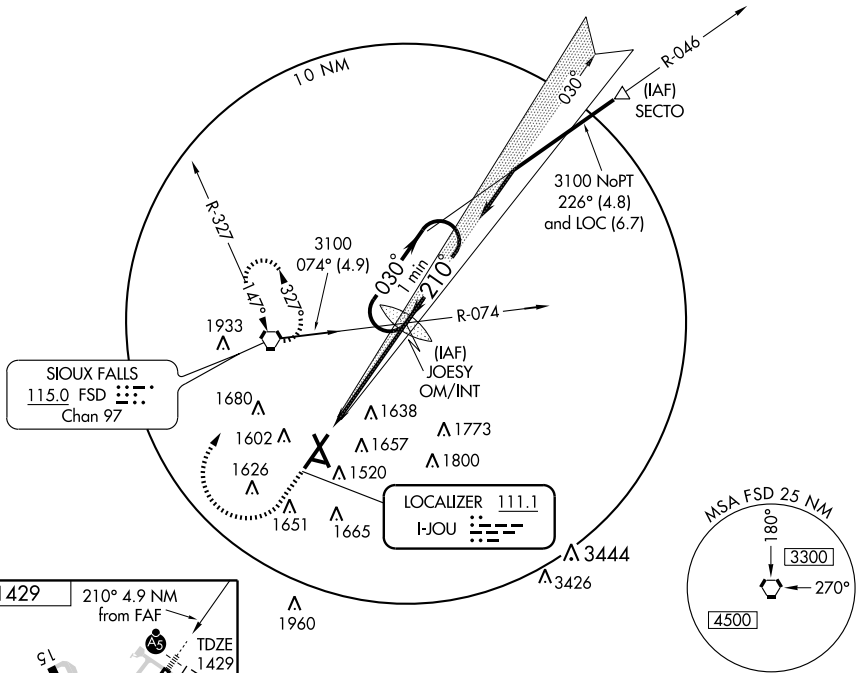
ILS or LOC RWY 21

SIoux FALLS/JOE FOSS FIELD (FSD)

LOC I-JOU 111.1	APP CRS 210°	Rwy Idg 8999
		TDZE 1429
		Apt Elev 1429

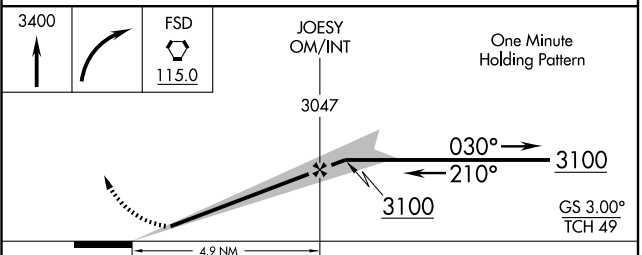
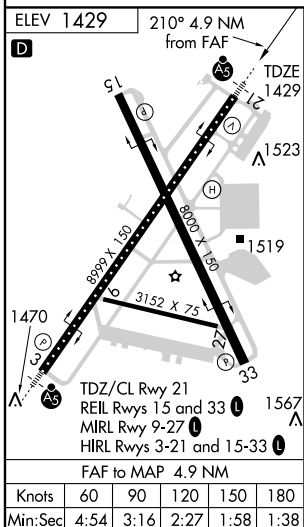
		MISSED APPROACH: Climb to 3400 then right turn direct FSD VORTAC and hold.		

ATIS 126.6	SIoux FALLS APP CON* 125.8 353.6	SIoux FALLS TOWER* 118.3 (CTAF) 257.8	GND CON 121.9 348.6	UNICOM 122.95
----------------------	--	---	-------------------------------	-------------------------



NC-1, 22 OCT 2009 to 19 NOV 2009

NC-1, 22 OCT 2009 to 19 NOV 2009



CATEGORY	A	B	C	D
S-ILS 21	1629/18 200 (200-½)			
S-LOC 21	1920/24	491 (500-½)	1920/40 491 (500-¾)	1920/50 491 (500-1)
CIRCLING	1960-1	531 (600-1)	1960-1½ 531 (600-1½)	2040-2 611 (700-2)