

SIoux FALLS, SOUTH DAKOTA

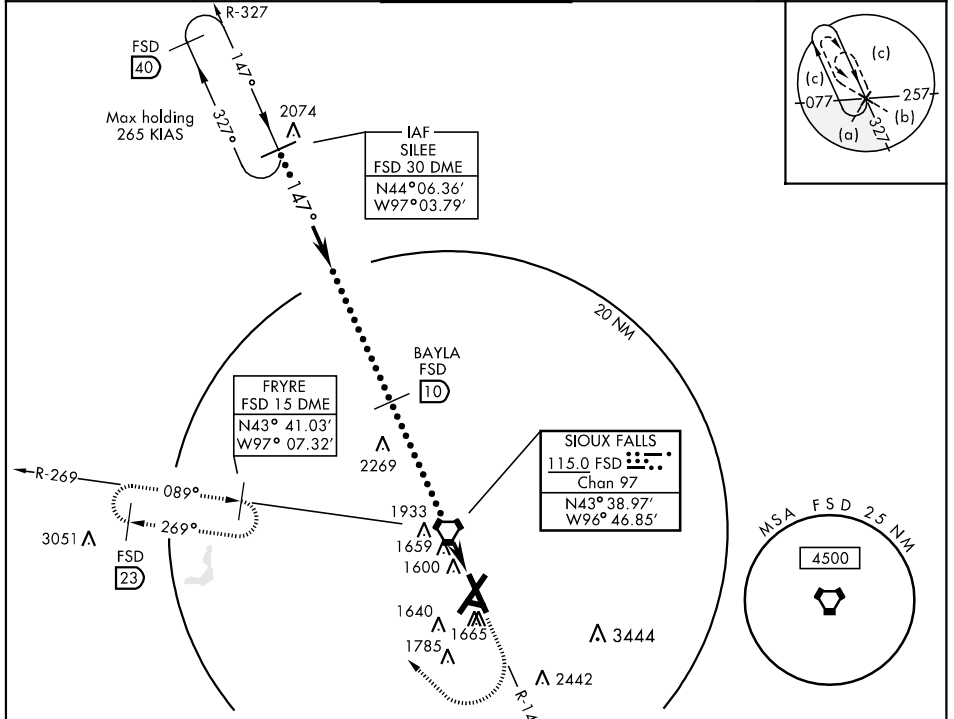
VORTAC FSD <b>115.0</b> Chan 97	APCH CRS <b>147°</b>	Rwy ldg TDZE <b>8000</b> <b>1428</b> Arpt Elev <b>1429</b>
---------------------------------------	-------------------------	---

JAL-396 [USAF]

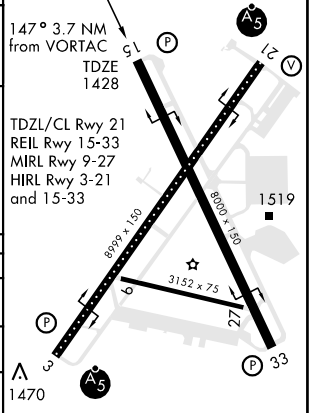
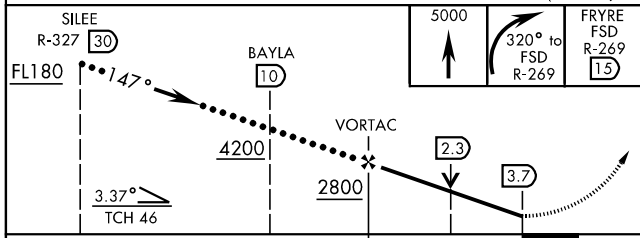
**HI-TACAN RWY 15**  
SIoux FALLS/JOE FOSS FIELD (FSD)

**MISSED APPROACH:** Climb to 5000 then right turn via heading 320° and FSD R-269 to FRYRE 15 DME and hold.

ATIS <b>126.6</b>	SIoux FALLS APP CON <b>125.8 126.9 353.6</b>	SIoux FALLS TOWER ★ <b>118.30 257.8</b>	GND CON <b>121.9 348.6</b>	ASR
----------------------	---	--	-------------------------------	-----



EMERG SAFE ALT 100 NM 4600



CATEGORY	C	D	E
S-15	1920-1¼ 492 (500-1¼)	1920-1½ 492 (500-1½)	1920-1¾ 492 (500-1¾)
CIRCLING	1960-1½ 531 (600-1½)	2040-2 611 (700-2)	2300-3 871 (900-3)
S-ASR 15	1960-1½ 534 (600-1½)	1960-1¾ 534 (600-1¾)	1960-2 534 (600-2)

SIoux FALLS, SOUTH DAKOTA 43° 35'N-96° 44'W SIoux FALLS/ JOE FOSS FIELD (FSD)  
Amdt 8A 05356

**HI-TACAN RWY 15**

NC-1, 22 OCT 2009 to 19 NOV 2009

NC-1, 22 OCT 2009 to 19 NOV 2009