

LOC I-FSD 109.9	APCH CRS 030°	Rwy Idg 8999	TDZE 1423	Arpt Elev 1429
---------------------------	-------------------------	------------------------	---------------------	--------------------------

JAL-396 [USAF]

SIoux FALLS/JOE FOSS FIELD (KFSD)

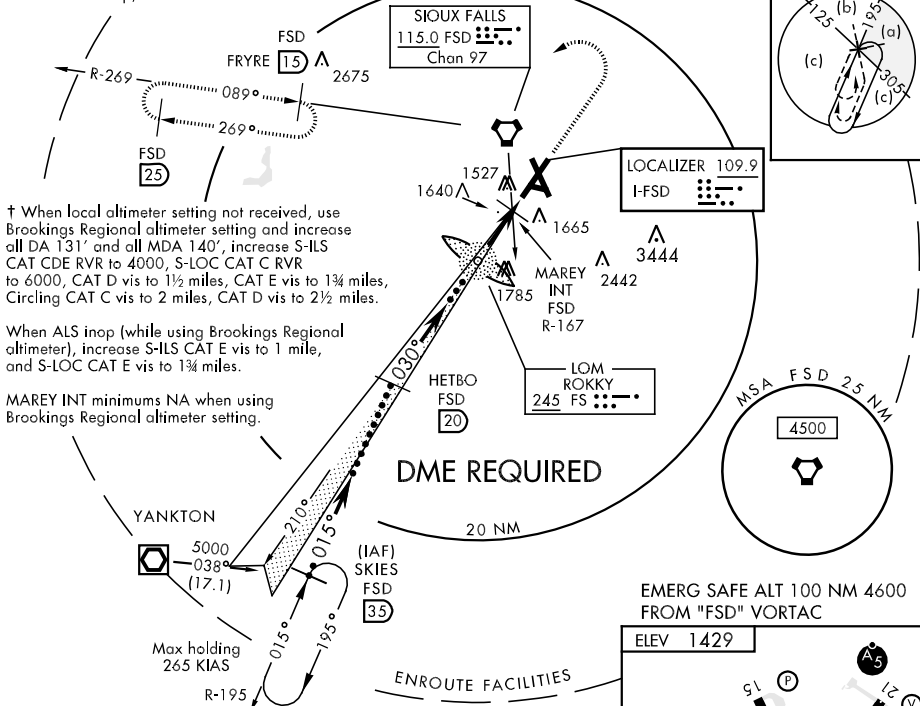
▼ * RVR 1800 authorized with the use of Flight Director or Auto Pilot or Heads Up Display to DA. When ALS inop, increase CAT E vis to ¾ mile.



MISSED APPROACH: Climb to 3400, then climbing left turn to 5000 via heading 240° and via FSD VORTAC R-269 to FRYRE (FSD 1.5 DME) and hold.

ATIS 126.6	SIoux FALLS APP CON 125.8 126.9 353.6	SIoux FALLS TOWER * 118.30 257.8	GND CON 121.9 348.6	ASR
----------------------	---	--	-------------------------------	-----

** When ALS inop, increase CAT E vis to 1¾ mile.

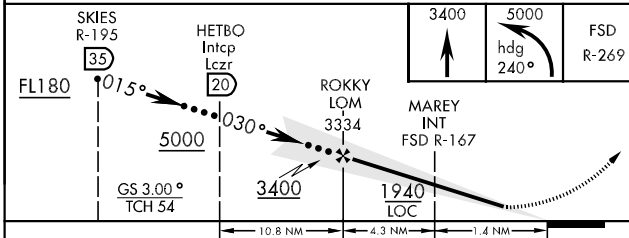


† When local altimeter setting not received, use Brookings Regional altimeter setting and increase all DA 131' and all MDA 140', increase S-ILS CAT CDE RVR to 4000, S-LOC CAT C RVR to 6000, CAT D vis to 1½ miles, CAT E vis to 1¾ miles, Circling CAT C vis to 2 miles, CAT D vis to 2½ miles.

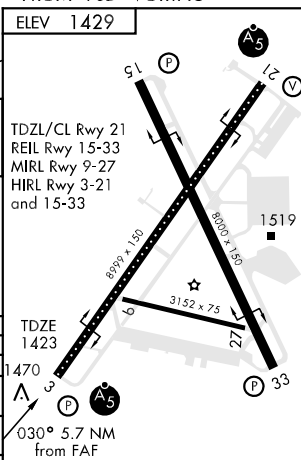
When ALS inop (while using Brookings Regional altimeter), increase S-ILS CAT E vis to 1 mile, and S-LOC CAT E vis to 1¾ miles.

MAREY INT minimums NA when using Brookings Regional altimeter setting.

EMERG SAFE ALT 100 NM 4600 FROM "FSD" VORTAC



CATEGORY	C	D	E
S-ILS 3*†	1623/24	200	(200-½)
S-LOC 3***	1940/50 517 (600-1)	1940/60	517 (600-1¼)
CIRCLING †	1960-1½ 531 (600-1½)	2040-2 611 (700-2)	2300-3 871 (900-3)
S-ASR 3***†	1940/50 517 (600-1)	1940/60	517 (600-1¼)
MAREY FIX MINIMA			
S-LOC 3 †	1780/24 357 (400-½)	1780/40	357 (400-¾)



FAF to MAP 5.7 NM					
Knots	120	140	160	180	200
Min:Sec	2:51	2:27	2:08	1:54	1:43

NC-1, 22 OCT 2009 to 19 NOV 2009

NC-1, 22 OCT 2009 to 19 NOV 2009