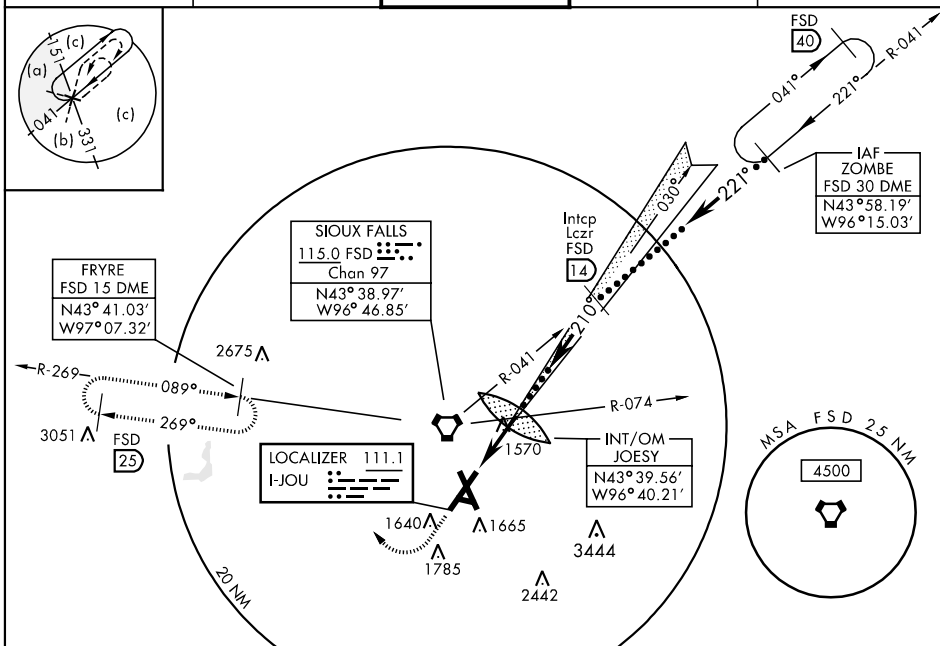


LOC I-JOU 111.1	APCH CRS 210°	Rwy ldg 8999 TDZE 1429 Arprt Elev 1429	JAL-396 [USAF]	SIoux FALLS/JOE FOSS FIELD (FSD)
---------------------------	-------------------------	---	----------------	----------------------------------

MALS MISSED APPROACH: Climb to 3400 then climbing right turn to 5000 via heading 300° and FSD R-269 to FRYRE 15 DME and hold.

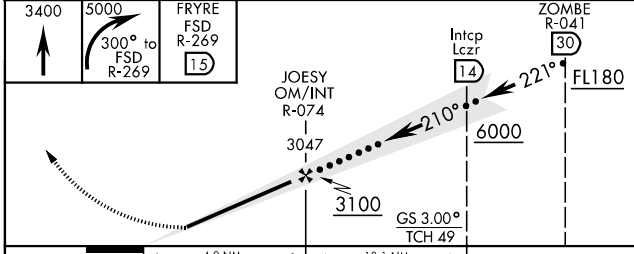
ATIS 126.6	SIoux FALLS APP CON 125.8 126.9 353.6	SIoux FALLS TOWER ★ 118.30 257.8	GND CON 121.9 348.6	ASR
----------------------	---	--	-------------------------------	-----



NC-1, 22 OCT 2009 to 19 NOV 2009

NC-1, 22 OCT 2009 to 19 NOV 2009

EMERG SAFE ALT 100 NM 4600



ELEV 1429

210° 4.9 NM from JOESY INT/OM

TDZL/CL Rwy 21
REIL Rwy 15-33
MIRL Rwy 9-27
HIRL Rwy 3-21 and 15-33

FAF to MAP 4.9 NM					
Knots	120	140	160	180	200
Min:Sec	2:27	2:06	1:50	1:38	1:28

CATEGORY	C		D		E	
	1629/18	200 (200-3/4)	1920/50	1920/50	1629/24	200 (200-1/2)
S-ILS 21	1629/18	200 (200-3/4)	1920/50	1920/50	1629/24	200 (200-1/2)
S-LOC 21	491 (500-3/4)		491 (500-1)		491 (500-1/4)	
CIRCLING	1960-1 1/2		2040-2		2300-3	
	531 (600-1 1/2)		611 (700-2)		871 (900-3)	
S-ASR 21	1960/50		1960/60		1960-1 1/2	
	531 (600-1)		531 (600-1 1/4)		531 (600-1 1/2)	