

SIoux CITY, IOWA


AL-395 (FAA)

VORTAC SUX 116.5 Chan 112	APP CRS 131°	Rwy Idg TDZE Apt Elev	9002 1095 1098
---	------------------------	-----------------------------	---

VOR/DME or TACAN RWY 13

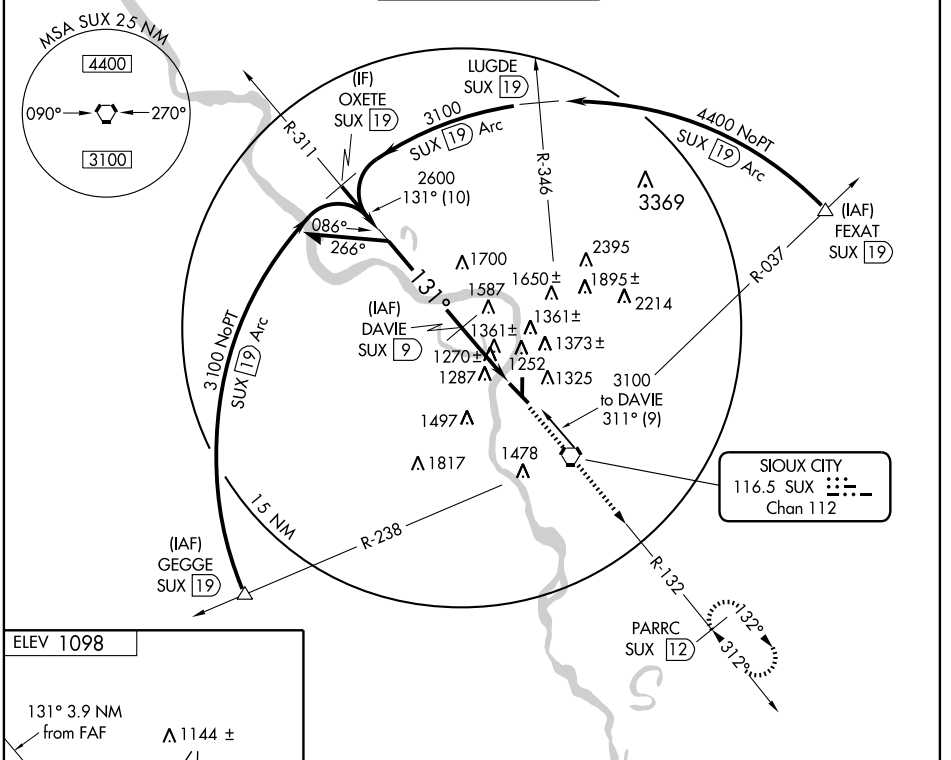
SIoux GATEWAY/COLONEL BUD DAY FIELD (SUX)

⚠ When local altimeter setting not received, use Le Mars altimeter setting and increase all MDA 80 feet, and increase S-13 Cat C/D visibility ¼ mile, Cat E visibility ½ mile, Circling Cat C/D visibility ¼ mile. Inoperative table does not apply to Cat C. VDP NA when using Le Mars altimeter setting.

MALS 

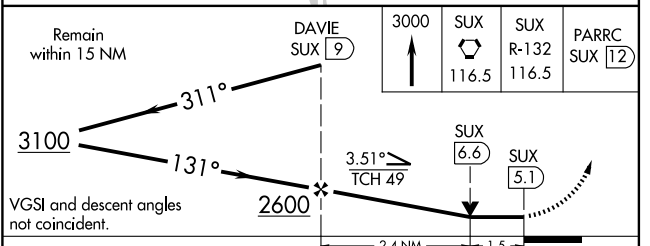
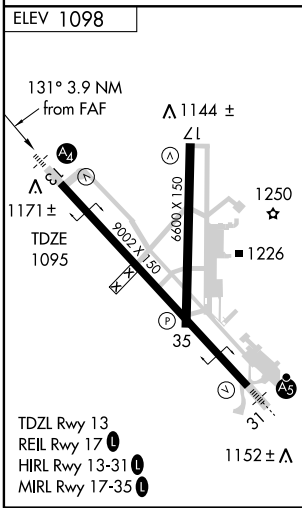
MISSED APPROACH: Climb to 3000 direct SUX VORTAC then via SUX R-132 to PARRC/12 DME and hold.

ATIS 119.45 270.8	SIoux CITY APP CON 124.6 307.0	SIoux CITY TOWER* 118.7 (CTAF) 254.3	GND CON 121.9 348.6	UNICOM 122.95
-----------------------------	--	--	-------------------------------	-------------------------



NC-3, 22 OCT 2009 to 19 NOV 2009

NC-3, 22 OCT 2009 to 19 NOV 2009



CATEGORY	A	B	C	D	E
S-13	1620/40	525 (600-¾)	1620-1½ 525 (600-1½)	1620-1¾ 525 (600-1¾)	
CIRCLING	1640-1	542 (600-1)	1660-1½ 562 (600-1½)	1680-2 582 (600-2)	2000-3 902 (1000-3)

SIoux CITY, IOWA
Amdt 18 09071

42°24'N-96°23'W

SIoux GATEWAY/COLONEL BUD DAY FIELD (SUX)

VOR/DME or TACAN RWY 13