

SIoux CITY, IOWA

AL-395 (FAA)

APP CRS	Rwy Idg	6600
175°	TDZE	1098
	Apt Elev	1098

RNAV (GPS) RWY 17

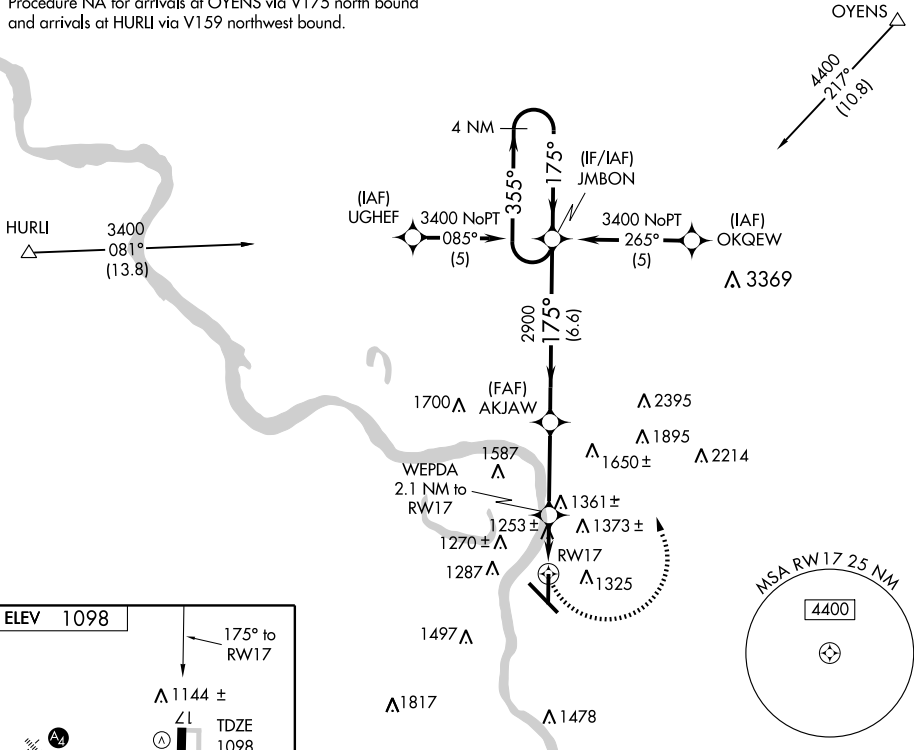
SIoux GATEWAY/COLONEL BUD DAY FIELD (SUx)

- ▼** DME/DME RNP -0.3 NA. Visibility reduction by helicopters NA.
- ▲** When local altimeter setting not received, use Le Mars altimeter setting and increase all MDA 80 feet. Increase LNAV and circling Cat C/D visibility 1/2 mile.

MISSED APPROACH: Climbing left turn to 4400 direct JMBON and hold.

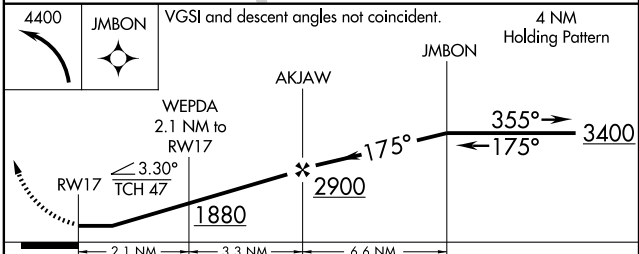
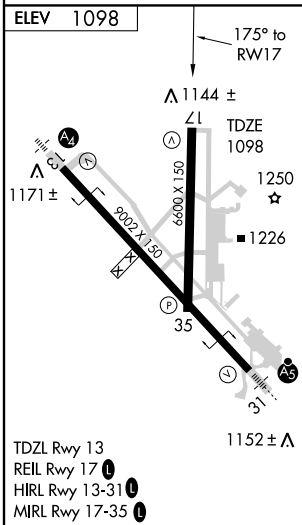
ATIS 119.45 270.8	SIoux CITY APP CON 124.6 307.0	SIoux CITY TOWER * 118.7 (CTAF) 0 254.3	GND CON 121.9 348.6	UNICOM 122.95
-----------------------------	--	---	-------------------------------	-------------------------

Procedure NA for arrivals at OYENS via V175 north bound and arrivals at HURLI via V159 northwest bound.



NC-3, 22 OCT 2009 to 19 NOV 2009

NC-3, 22 OCT 2009 to 19 NOV 2009



CATEGORY	A	B	C	D
LNAV MDA	1660-1	562 (600-1)	1660-1½ 562 (600-1½)	1660-1¾ 562 (600-1¾)
CIRCLING	1660-1	562 (600-1)	1660-1½ 562 (600-1½)	1680-2 582 (600-2)

SIoux CITY, IOWA
Orig 09071

SIoux GATEWAY/COLONEL BUD DAY FIELD (SUx)
42°24'N-96°23'W

RNAV (GPS) RWY 17