

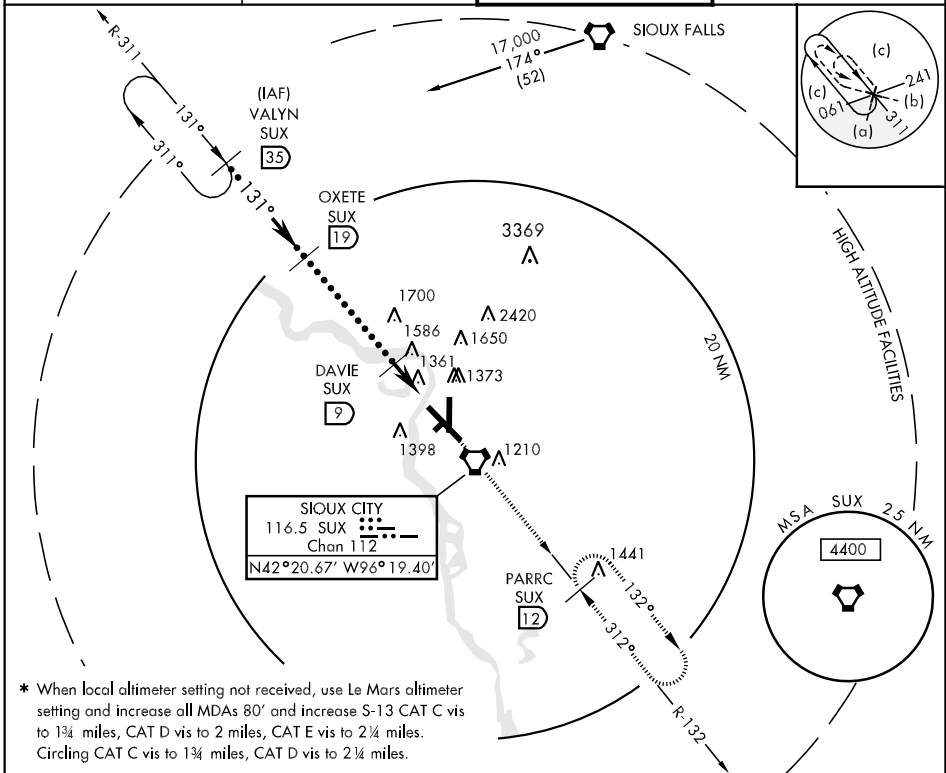
SIoux CITY, IOWA

# HI-TACAN or VOR/DME RWY 13

VORTAC SUX 116.5 Chan 112	APCH CRS 131°	Rwy Idg TDZE 1095 Arprt Elev 1098	JAL-395 [USAF] SIoux CITY/SIoux GATEWAY/COL. BUD DAY FIELD (KSUX)
---------------------------------	------------------	---	--

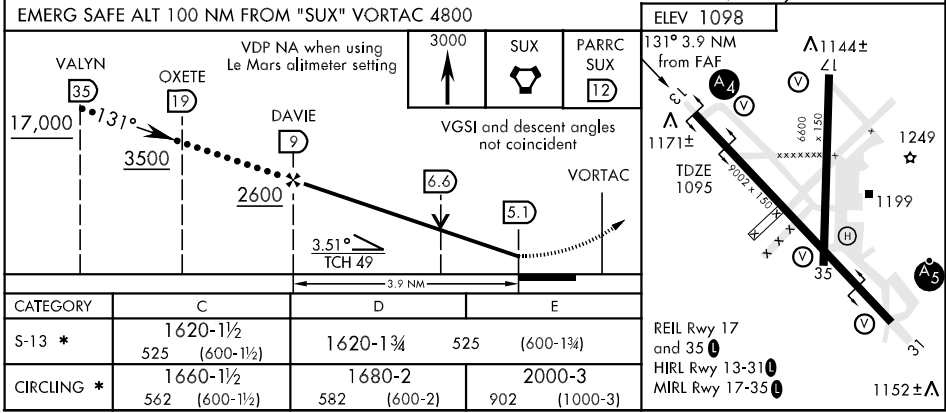
MALS A4	MISSED APPROACH: Climb to 3000 direct SUX VORTAC, then via SUX R-132 to PARRC (SUX 12 DME) and hold.
------------	--

ATIS 119.45 277.2	SIoux CITY APP CON 124.6 307.0	SIoux CITY TOWER * 118.7 (CTAF) 254.3	GND CON 121.9 348.6
----------------------	-----------------------------------	--	------------------------



NC-3, 22 OCT 2009 to 19 NOV 2009

NC-3, 22 OCT 2009 to 19 NOV 2009



SIoux CITY, IOWA 42°24'N-96°23'W SIoux CITY/SIoux GATEWAY/COL. BUD DAY FIELD (KSUX)

# HI-TACAN or VOR/DME RWY 13

