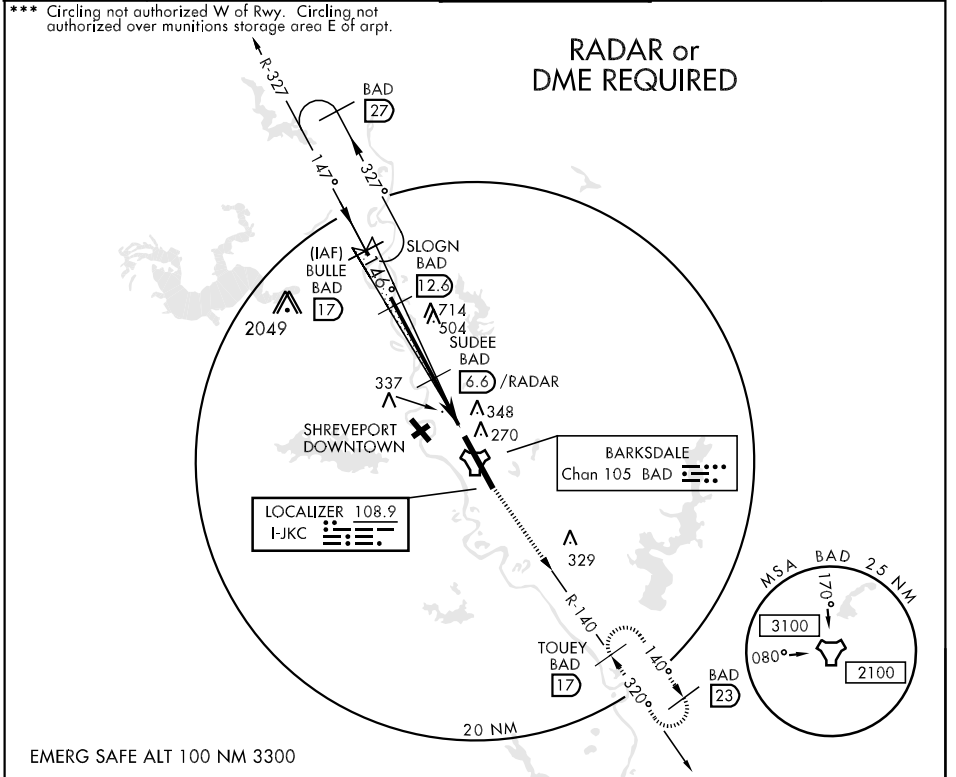


LOC I-JKC <b>108.9</b>	APCH CRS <b>146°</b>	Rwy Idg <b>11,756</b> TDZE <b>166</b> Arpt Elev <b>166</b>	AL-391 [USAF]	BARKSDALE AFB (KBAD)
* When ALS inop, increase RVR to 40 and vis to ¼ mile. ** When ALS inop, increase CAT AB RVR to 50 and vis to 1 mile, CAT C RVR to 60 and vis to 1¼ miles, CAT D vis to 1½ miles, CAT E vis to 1¾ miles.			ALSF-1 	MISSED APPROACH: Climb to 3000 via BAD R-140 direct TOUEY and hold.
ATIS <b>307.025</b>	SHREVEPORT APP CON 320°-152° <b>123.75 327.0</b> 153°-319° <b>119.9 335.55</b>	BARKSDALE TOWER <b>128.25 278.3</b>	GND CON <b>121.8 275.8</b>	ASR



	BULE R-327 (17)	SLOGN BAD (12.6)	SUDEE (6.6) /RADAR	AKUYE (1.4)	TACAN	3000	TOUEY BAD (17)																									
						ELEV 166	146° 5.8 NM from FAF																									
<table border="1"> <thead> <tr> <th>CATEGORY</th> <th>A</th> <th>B</th> <th>C</th> <th>D</th> <th>E</th> </tr> </thead> <tbody> <tr> <td>S-ILS 15 *</td> <td colspan="5">366/24 200 (200-½)</td> </tr> <tr> <td>S-LOC 15 **</td> <td>640/24</td> <td>474 (500-½)</td> <td>640/40 474 (500-¾)</td> <td>640/50 474 (500-1)</td> <td>640/60 474 (500-1¼)</td> </tr> <tr> <td>CIRCLING***</td> <td colspan="3">NOT AUTHORIZED</td> <td>720-2 554 (600-2)</td> <td>780-2¼ 614(700-2¼)</td> </tr> <tr> <td>S-ASR 15 **</td> <td>660/24</td> <td>494 (500-½)</td> <td>660/40 494 (500-¾)</td> <td>660/50 494 (500-1)</td> <td>660/60 494 (500-1¼)</td> </tr> </tbody> </table>	CATEGORY	A	B	C	D	E	S-ILS 15 *	366/24 200 (200-½)					S-LOC 15 **	640/24	474 (500-½)	640/40 474 (500-¾)	640/50 474 (500-1)	640/60 474 (500-1¼)	CIRCLING***	NOT AUTHORIZED			720-2 554 (600-2)	780-2¼ 614(700-2¼)	S-ASR 15 **	660/24	494 (500-½)	660/40 494 (500-¾)	660/50 494 (500-1)	660/60 494 (500-1¼)		
CATEGORY	A	B	C	D	E																											
S-ILS 15 *	366/24 200 (200-½)																															
S-LOC 15 **	640/24	474 (500-½)	640/40 474 (500-¾)	640/50 474 (500-1)	640/60 474 (500-1¼)																											
CIRCLING***	NOT AUTHORIZED			720-2 554 (600-2)	780-2¼ 614(700-2¼)																											
S-ASR 15 **	660/24	494 (500-½)	660/40 494 (500-¾)	660/50 494 (500-1)	660/60 494 (500-1¼)																											
<table border="1"> <thead> <tr> <th colspan="6">FAF to MAP 5.2 NM</th> </tr> <tr> <th>Knots</th> <th>60</th> <th>90</th> <th>120</th> <th>150</th> <th>180</th> </tr> </thead> <tbody> <tr> <td>Min:Sec</td> <td>5:12</td> <td>3:28</td> <td>2:36</td> <td>2:05</td> <td>1:44</td> </tr> </tbody> </table>						FAF to MAP 5.2 NM						Knots	60	90	120	150	180	Min:Sec	5:12	3:28	2:36	2:05	1:44	<p>HIRL Rwy 15-33</p>								
FAF to MAP 5.2 NM																																
Knots	60	90	120	150	180																											
Min:Sec	5:12	3:28	2:36	2:05	1:44																											

SC-4, 22 OCT 2009 to 19 NOV 2009

SC-4, 22 OCT 2009 to 19 NOV 2009