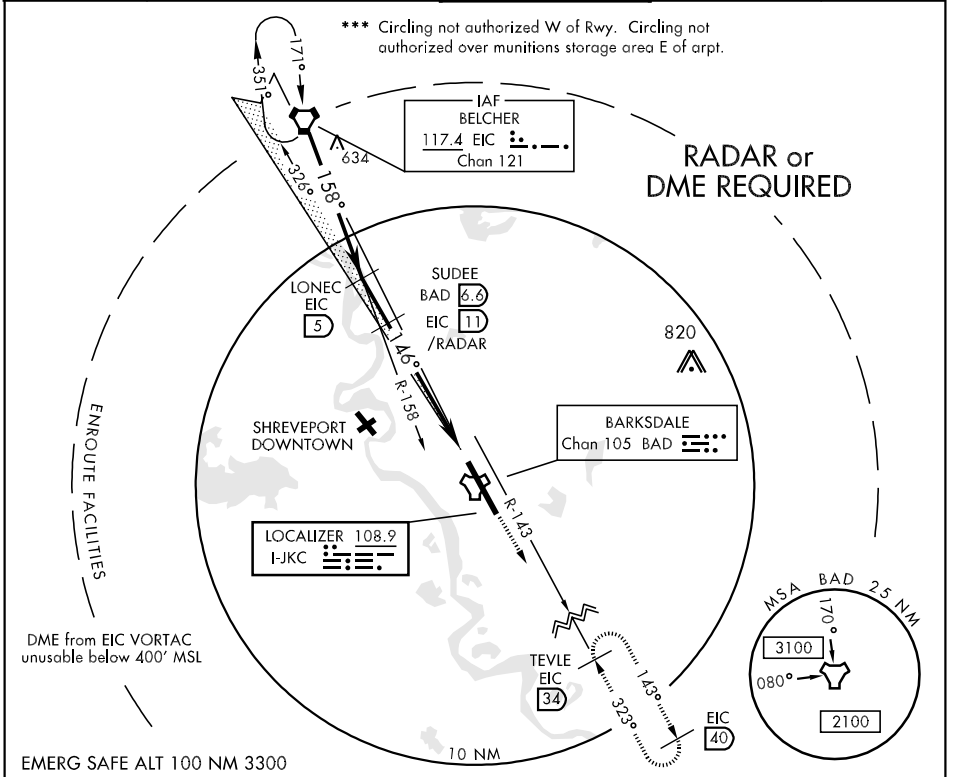


LOC I-JKC <b>108.9</b>	APCH CRS <b>146°</b>	Rwy Idg <b>11,756</b> TDZE <b>166</b> Arpt Elev <b>166</b>	AL-391 [USAF]	BARKSDALE AFB (KBAD)
*When ALS inop, increase RVR to 40 and vis to 3/4 mile. ** When ALS inop, increase CAT AB RVR to 50 and vis to 1 mile, CAT C RVR to 60 and vis to 1 1/4 mile, CAT D vis to 1 1/2 miles, CAT E vis to 1 3/4 miles.			ALSF-1 	MISSED APPROACH: Climb to 2000, turn left to join EIC VORTAC R-143 outbound direct TEVLE (EIC 34 DME) and hold, maintain 3000.
ATIS <b>307.025</b>	SHREVEPORT APP CON 320°-152° <b>123.75 327.0</b> 153°-319° <b>119.9 335.55</b>	BARKSDALE TOWER <b>128.25 278.3</b>	GND CON <b>121.8 275.8</b>	ASR



EIC VORTAC	Intcp. Iczr LONEC EIC 5	SUDEE EIC 11 /RADAR	2000	EIC R-143	3000	TEVLE EIC 34	ELEV 166	146° 5.8 NM from FAF			
4000	158°	146°	1800	GS 2.50 TCH 51	FIRKU EIC 16.2	TACAN	247	288			
							216	TDZE 166			
							339	289			
							324	247			
								333			
CATEGORY	A	B	C	D	E						
S-ILS 15*	366/24		200	(200-1/2)							
S-LOC 15**	640/24	474 (500-1/2)	640/40	640/50	640/60						
			474 (500-3/4)	474 (500-1)	474 (500-1 1/4)						
CIRCLING***	NOT AUTHORIZED			720-2	780-2 1/4						
				554 (600-2)	614 (700-2 1/4)						
S-ASR 15**	660/24	494 (500-1/2)	660/40	660/50	660/60						
			494 (500-3/4)	494 (500-1)	494 (500-1 1/4)						
						FAF to MAP 5.2 NM					
						Knots	60	90	120	150	180
						Min:Sec	5:12	3:28	2:36	2:05	1:44

SC-4, 22 OCT 2009 to 19 NOV 2009

SC-4, 22 OCT 2009 to 19 NOV 2009