

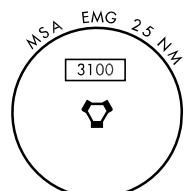
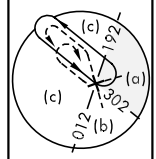
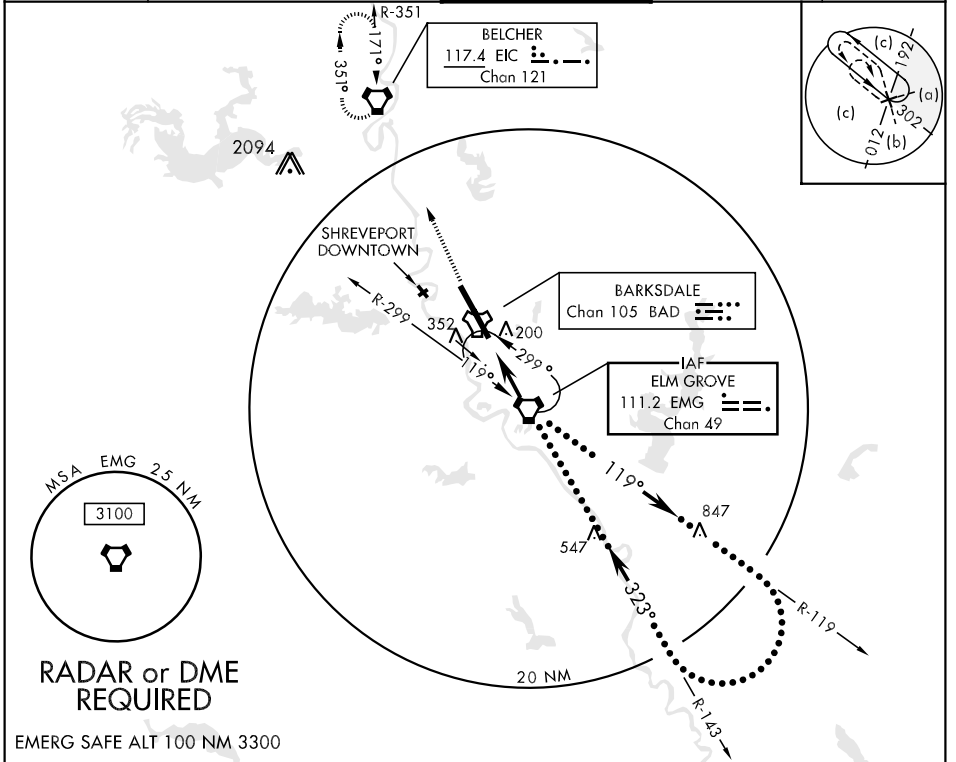
VORTAC EMG <b>111.2</b> Chan <b>49</b>	APCH CRS <b>323°</b>	Rwy Idg <b>11,756</b> TDZE <b>163</b> Arpt Elev <b>166</b>	JAL-391 [USAF]	BARKSDALE AFB (KBAD)
--	-------------------------	--	----------------	----------------------

\* When ALS inop, increase CAT C RVR to 60 and vis to 1¼ miles, CAT D vis to 1½ miles, CAT E vis to 1¾ miles.  
 \*\* Circling not authorized W of Rwy. Circling not authorized over munitions storage area E of arpt.



MISSED APPROACH: Climb to 3100 direct to EIC VORTAC and hold.

ATIS <b>307.025</b>	SHREVEPORT APP CON 320°-152° <b>123.75 327.0</b> 153°-319° <b>119.9 335.55</b>	BARKSDALE TOWER <b>128.25 278.3</b>	GND CON <b>121.8 275.8</b>	ASR
------------------------	--	--	-------------------------------	-----



**RADAR or DME REQUIRED**

EMERG SAFE ALT 100 NM 3300

3100 ↑	EIC 	ELEV 166			
CATEGORY	C	D	E	FAF to MAP 5.4 NM	
S-33 *	660/40 497 (500-¾)	660/50 497 (500-1)	660/60 497 (500-1¼)	Knots	120 140 160 180 200
CIRCLING **	NOT AUTHORIZED	720-2 554 (600-2)	780-2¼ 614 (700-2¼)	Min:Sec	2:42 2:19 2:01 1:48 1:37
S-ASR 33 *	660/40 497 (500-¾)	660/50 497 (500-1)	660/60 497 (500-1¼)		

SC-4, 22 OCT 2009 to 19 NOV 2009

SC-4, 22 OCT 2009 to 19 NOV 2009