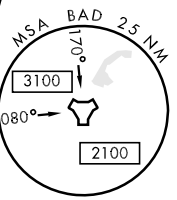
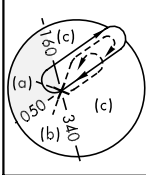
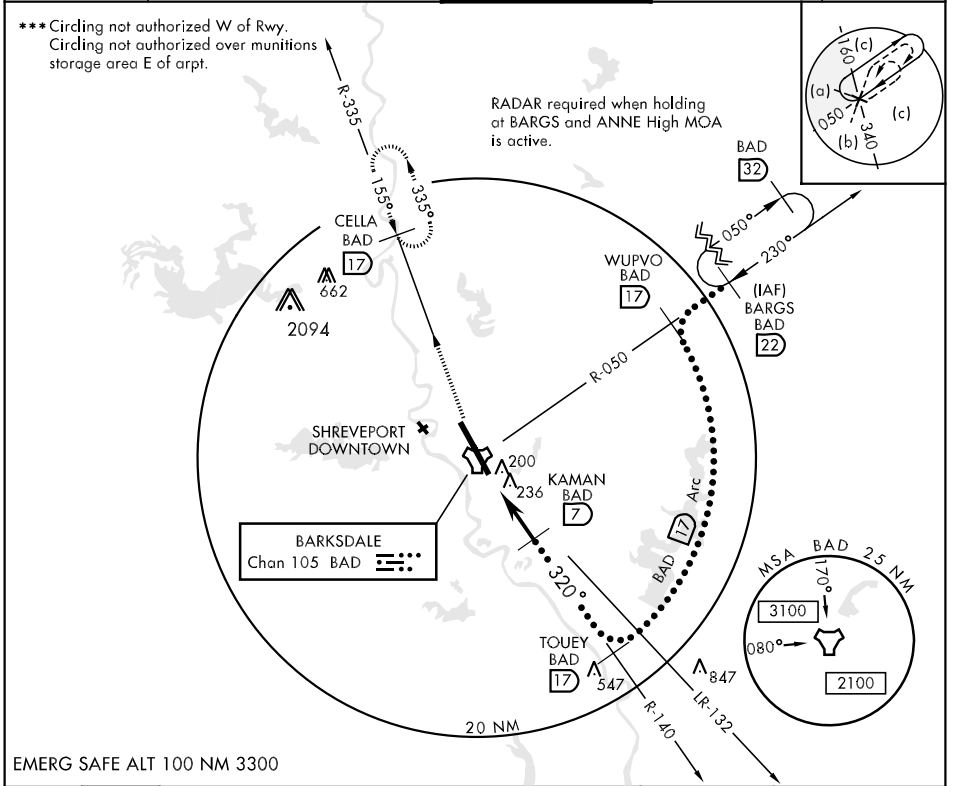


TACAN BAD Chan 105	APCH CRS 320°	Rwy Idg 11,756 TDZE 163 Arpt Elev 166	JAL-391 [USAF]	BARKSDALE AFB (KBAD)
-----------------------	------------------	---	----------------	----------------------

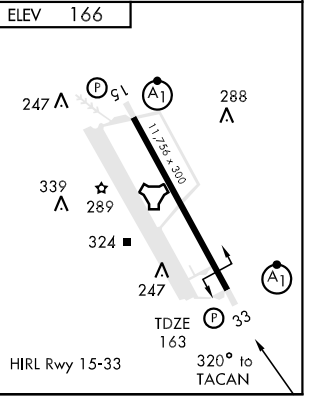
\* When ALS inop, increase vis all CAT ½ mile.  
 \*\* When ALS inop, increase CAT C RVR to 60 and vis to 1¼ miles, CAT D vis to 1½ miles, CAT E vis to 1¾ miles.

ATIS 307.025	SHREVEPORT APP CON 320°-152° 123.75 327.0 153°-319° 119.9 335.55	BARKSDALE TOWER 128.8 278.3	GND CON 121.8 275.8	ASR
-----------------	--	--------------------------------	------------------------	-----



EMERG SAFE ALT 100 NM 3300

3000 BAD R-335	CELLA BAD R-335	ELEV 166	
TACAN	HOVUX 1.8	KAMAN 7	
		TOUEY 17	
		WUPVO R-050 17	
		BARGS R-050 22	
		12,000	
		230°	
		320°	
		1800	
		3000	
		2.57°	
		TCH 51	
		0.6	
		5.2 NM	
CATEGORY	C	D	E
S-33 *	640/40 477 (500-¾)	640/50 477 (500-1)	640/60 477 (500-1¼)
CIRCLING ***	NOT AUTHORIZED	720-2 554 (600-2)	780-2¼ 614 (700-2¼)
S-ASR 33 **	660/40 497 (500-¾)	660/50 497 (500-1)	660/60 497 (500-1¼)



SC-4, 22 OCT 2009 to 19 NOV 2009

SC-4, 22 OCT 2009 to 19 NOV 2009