

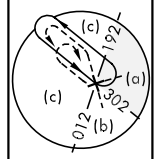
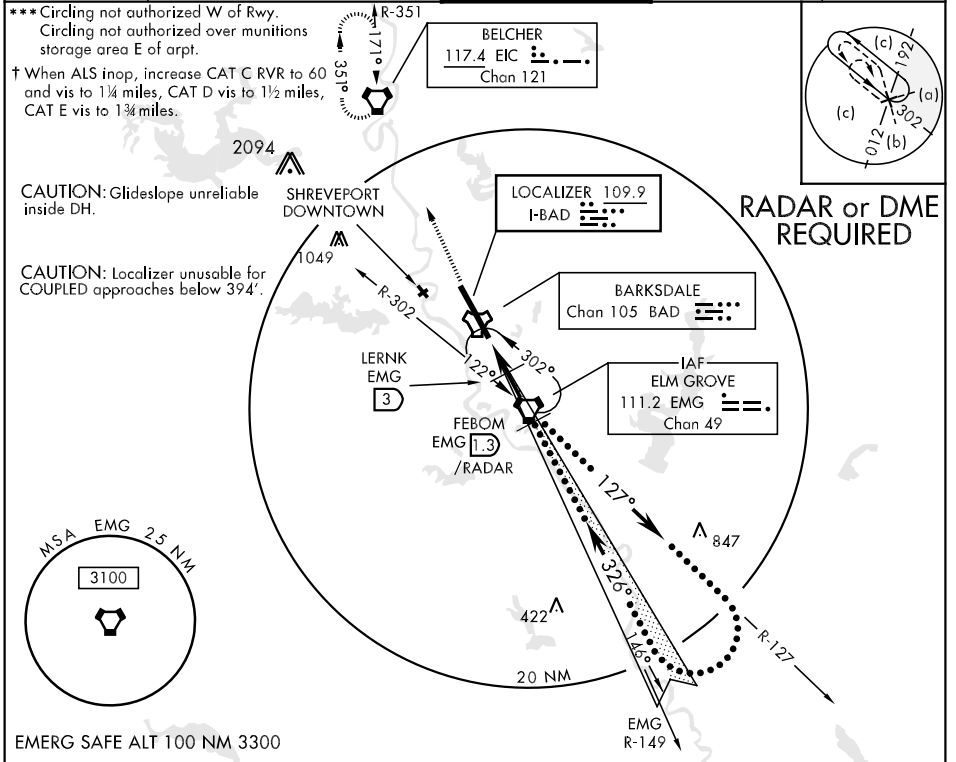
LOC I-BAD 109.9	APCH CRS 326°	Rwy Idg 11,756 TDZE 163 Arprt Elev 166	JAL-391 [USAF]	BARKSDALE AFB (KBAD)
---------------------------	-------------------------	---	----------------	----------------------

* When ALS inop, increase RVR to 40 and vis to 3/4 mile.
 ** When ALS inop, increase vis CAT C RVR to 60 and vis to 1 1/4 miles, CAT DE vis to 1 1/2 miles.

ALSF-1

MISSED APPROACH: Climb to 3100 direct to EIC VORTAC and hold.

ATIS 307.025	SHREVEPORT APP CON 320°-152° 123.75 327.0 153°-319° 119.9 335.55	BARKSDALE TOWER 128.25 278.3	GND CON 121.8 275.8	ASR
------------------------	--	--	-------------------------------	-----



RADAR or DME REQUIRED

3100	EIC	ELEV 166		
TACAN	EMG VORTAC	247		
APDAG EMG 5.4	LERNK EMG 3	288		
EMG 4.5	FEBOM EMG 1.3 /RADAR	289		
1000	VOR 329°	339		
2200	Right at 8000	255		
GS 2.50° TCH 48	Remain within 23 NM of ELM GROVE.	324		
0.5	6.7 NM	247		
CATEGORY	C	D	E	TDZE 161
S-ILS 33*	363/24	200	(200-1/2)	33
S-LOC 33**	620/40 457 (500-3/4)	620/50	457 (500-1)	HIRL Rwy 15-33
CIRCLING ***	NOT AUTHORIZED	720-2 554 (600-2)	780-2 1/4 614 (700-2 1/4)	FAF to MAP 6.7 NM
S-ASR 33 †	660/40 497 (500-3/4)	660/50 497 (500-1)	660/60 497 (500-1 1/4)	Knots 120 140 160 180 200
				Min:Sec 2:42 2:19 2:01 1:48 1:37

SC-4, 22 OCT 2009 to 19 NOV 2009

SC-4, 22 OCT 2009 to 19 NOV 2009