

# RNAV (GPS) RWY 31

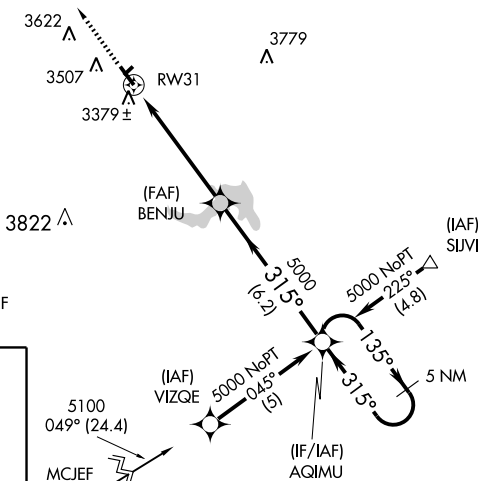
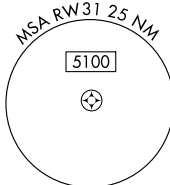
IMPERIAL MUNI (IML)

WAAS CH <b>72903</b> <b>W31A</b>	APP CRS <b>315°</b>	Rwy Idg <b>5022</b> TDZE <b>3270</b> Apt Elev <b>3275</b>
--	------------------------	---

**⚠** BARO-VNAV NA when using Ogallala altimeter setting. For uncompensated BARO-VNAV systems, LNAV/VNAV NA below -21°C (-5°F) or above 54°C (130°F). DME/DME RNP-0.3 NA. Visibility reduction by helicopters NA. If local altimeter setting not received, use Ogallala altimeter setting and increase all DAs 86 feet and all MDAs 100 feet. VDP NA when using Ogallala altimeter setting.

**MISSED APPROACH:**  
Climb to 5100 direct AXPUX and hold.

ASOS <b>124.175</b>	DENVER CENTER <b>132.7 397.85</b>	UNICOM <b>122.8 (CTAF) 0</b>
------------------------	--------------------------------------	---------------------------------

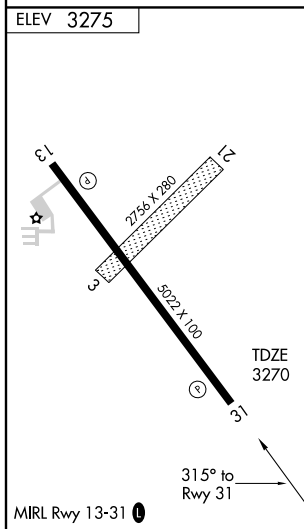


Procedure NA for arrivals at MCJEF via V220 westbound.

Procedure NA for arrivals at SIJVI via V8 eastbound.

NC-2, 22 OCT 2009 to 19 NOV 2009

NC-2, 22 OCT 2009 to 19 NOV 2009



5100	AXPUX	5 NM Holding Pattern			
*LNAV only.		*1.1 NM to RWY 31	5000		
RWY 31	BENJU	AGIMU	5000		
1.1 NM	4.1 NM	6.2 NM	GS 3.00° TCH 41		
CATEGORY	A	B	C	D	
LPV DA	3520-1	250 (300-1)	NA		
LNAV/VNAV DA	3649-1¼	379 (400-1¼)	NA		
LNAV MDA	3640-1	370 (400-1)	NA		
CIRCLING	3860-1	585 (600-1)	NA		