

IMPERIAL, NEBRASKA

AL-390 (FAA)

RNAV (GPS) RWY 13

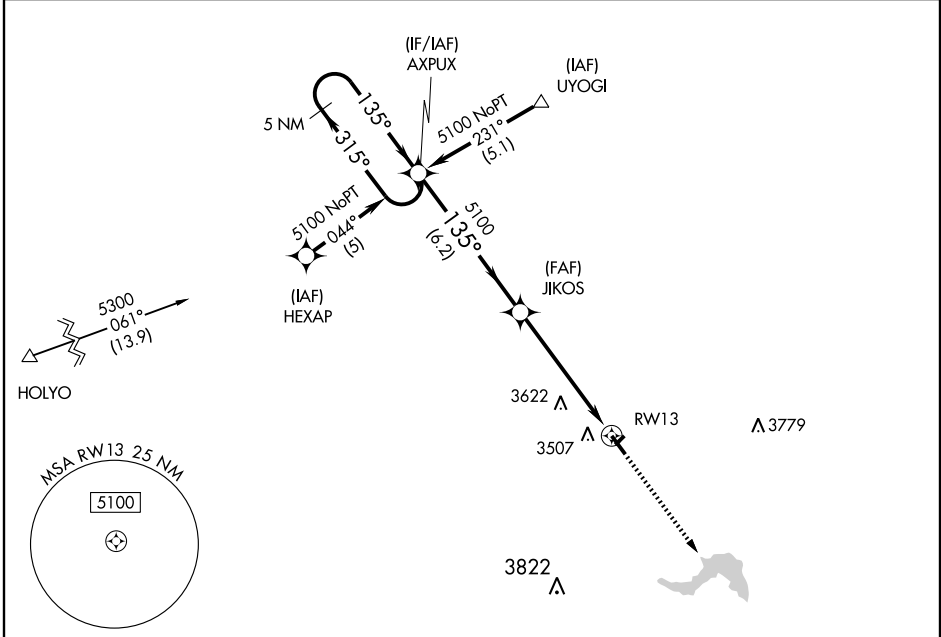
IMPERIAL MUNI (IML)

WAAS CH 66003 W13A	APP CRS 135°	Rwy Idg 5022 TDZE 3273 Apt Elev 3275
---------------------------------	------------------------	---

⚠ For uncompensated BARO-VNAV systems, LNAV/VNAV NA below -21°C (-5°F) or above 54°C (130°F). DME/DME RNP-0.3 NA. Visibility reduction by helicopters NA. If local altimeter setting not received, use Ogallala altimeter setting and increase all DAs 86 feet and all MDAs 100 feet. VDP and BARO-VNAV NA when using Ogallala altimeter setting.

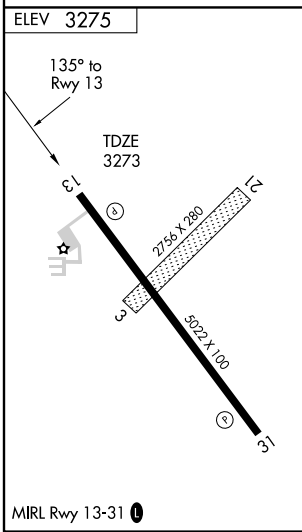
⚠ MISSED APPROACH: Climb to 5000 direct AQIMU and hold.

ASOS 124.175	DENVER CENTER 132.7 397.85	UNICOM 122.8 (CTAF) 0
------------------------	--------------------------------------	---------------------------------



NC-2, 22 OCT 2009 to 19 NOV 2009

NC-2, 22 OCT 2009 to 19 NOV 2009



5 NM Holding Pattern

5000 AQIMU

↑

⬠

*LNAV only.

CATEGORY	A	B	C	D
LPV DA	3548-1	275 (300-1)		NA
LNAV/VNAV DA	3752-1¾	479 (500-1¾)		NA
LNAV MDA	3820-1	547 (600-1)		NA
CIRCLING	3860-1	585 (600-1)		NA

IMPERIAL, NEBRASKA
Orig 08157

40°31'N-101°37'W

RNAV (GPS) RWY 13