

IMPERIAL, NEBRASKA

AL-390 (FAA)

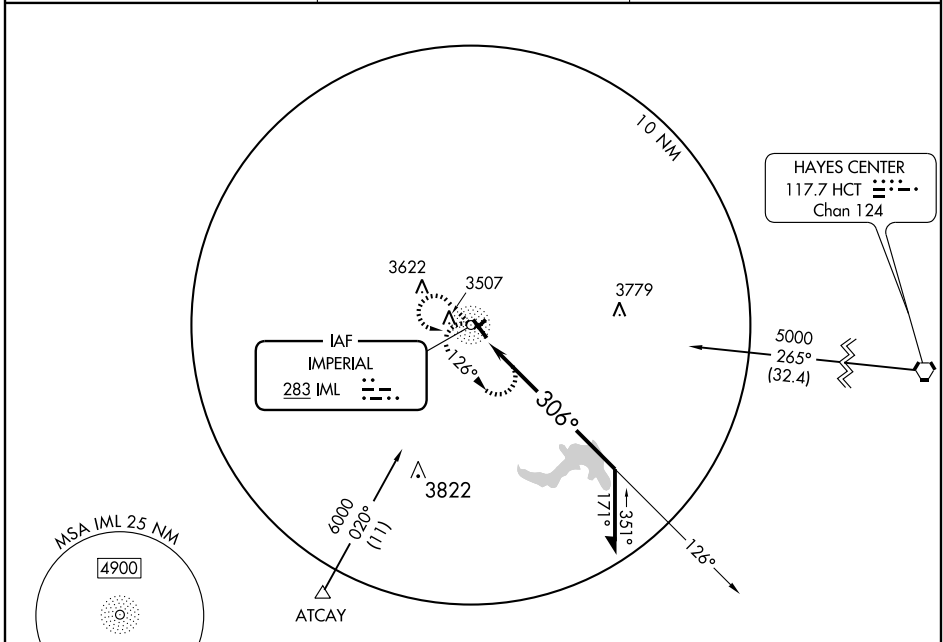
NDB IML <b>283</b>	APP CRS <b>306°</b>	Rwy Idg TDZE Apt Elev	<b>5022</b> <b>3272</b> <b>3272</b>
-----------------------	------------------------	-----------------------------	---

# NDB RWY 31

IMPERIAL MUNI (IML)

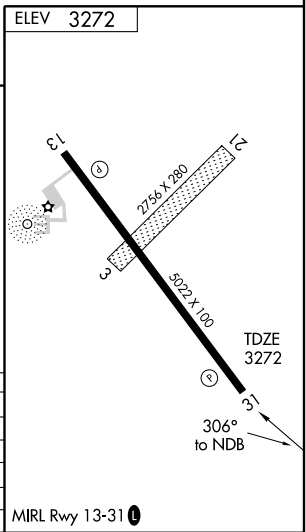
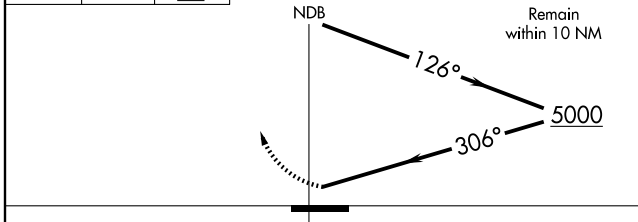
**▼** If local altimeter setting not received, use Ogallala altimeter setting. **MISSED APPROACH:** Climb to 5000 then left turn direct IML NDB and hold.

ASOS <b>124.175</b>	DENVER CENTER <b>132.7 397.85</b>	UNICOM <b>122.8 (CTAF)</b>
------------------------	--------------------------------------	-------------------------------



NC-2, 22 OCT 2009 to 19 NOV 2009

NC-2, 22 OCT 2009 to 19 NOV 2009



CATEGORY	A	B	C	D
S-31	3900-1	628 (700-1)		NA
CIRCLING	3900-1	628 (700-1)		NA
OGALLALA ALTIMETER SETTING MINIMUMS				
S-31	4000-1	728 (800-1)		NA
CIRCLING	4000-1	728 (700-1)		NA

MIRL Rwy 13-31

IMPERIAL, NEBRASKA  
Amdt 3B 09155

40°31'N-101°37'W

# IMPERIAL MUNI (IML)

## NDB RWY 31