

SHERMAN/DENISON, TEXAS


AL-389 (FAA)

# VOR/DME RNAV RWY 35R

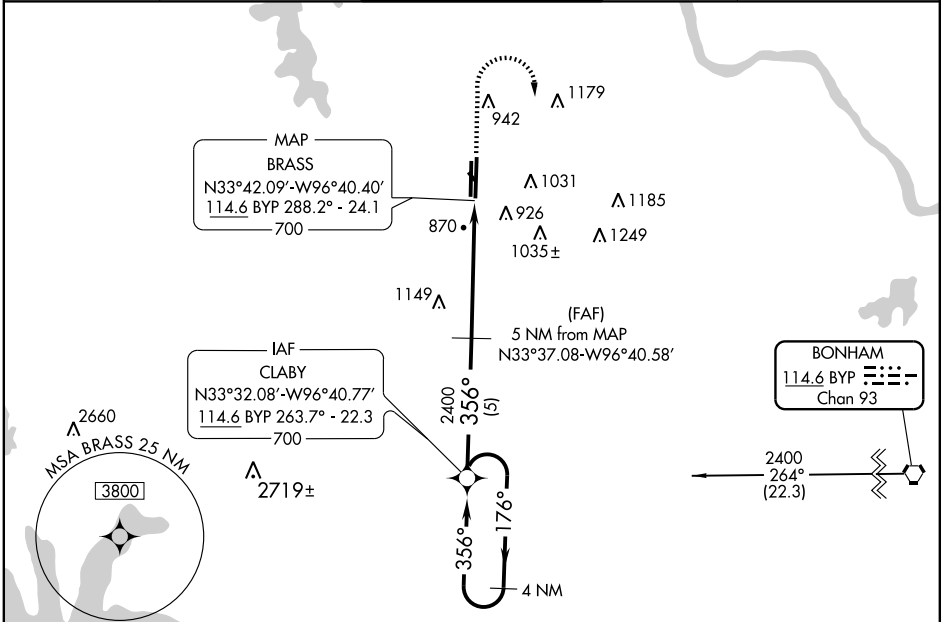
SHERMAN/DENISON/NORTH TEXAS RGNL (GYI)

VORTAC BYP <b>114.6</b> Chan <b>93</b>	APP CRS <b>356°</b>	Rwy Idg <b>9000</b> TDZE <b>749</b> Apt Elev <b>749</b>
--	------------------------	---

**NA** \* Inoperative table does not apply to S-35R Cat C.  
 \*\* Inoperative table does not apply to S-35R Cat B/C.  
 When local altimeter setting not received, use Dallas-Love Field altimeter setting. Visibility reduction by helicopters NA.

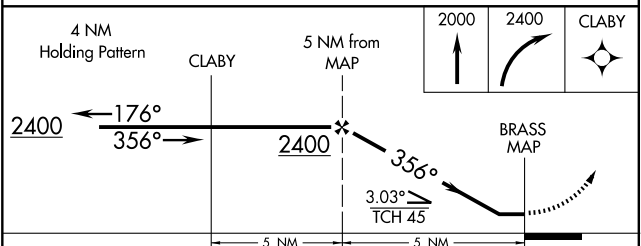
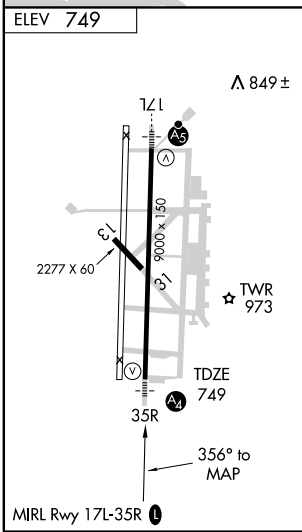
**MALS**  
  
**MISSED APPROACH:** Climb to 2000, then climbing right turn to 2400 direct CLABY and hold.

AWOS-3 <b>118.775</b>	FORT WORTH CENTER <b>124.75 377.1</b>	NORTH TEXAS RGNL* <b>120.575 (CTAF) 233.7</b>	GND CON <b>124.125</b>	UNICOM <b>122.7</b>
--------------------------	--	--	---------------------------	------------------------



SC-2, 22 OCT 2009 to 19 NOV 2009

SC-2, 22 OCT 2009 to 19 NOV 2009



CATEGORY	A	B	C	D
S-35R *	1460-3/4	711 (800-3/4)	1460-2 711 (800-2)	1460-2 1/4 711 (800-2 1/4)
CIRCLING	1460-1	711 (800-1)	1460-2 711 (800-2)	1460-2 1/4 711 (700-2 1/4)
<b>DALLAS-LOVE FIELD ALTIMETER SETTING MINIMUMS</b>				
S-35R **	1620-3/4 871 (900-3/4)	1620-1 1/4 871 (900-1 1/4)	1620-2 1/2 871 (900-2 1/2)	1620-2 3/4 871 (900-2 3/4)
CIRCLING	1620-1 871 (900-1)	1620-1 1/4 871 (900-1 1/4)	1620-2 1/2 871 (900-2 1/2)	1620-2 3/4 871 (900-2 3/4)

SHERMAN/DENISON, TEXAS  
 Orig-D 09127

33°43'N-96°40'W

# VOR/DME RNAV RWY 35R