

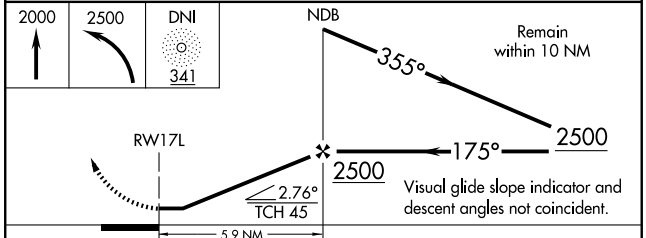
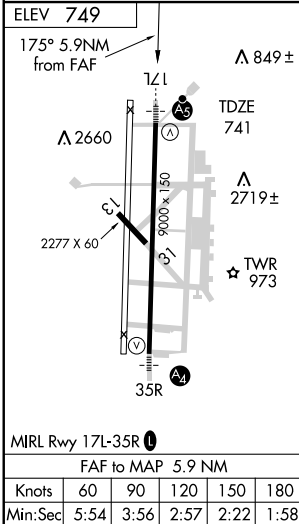
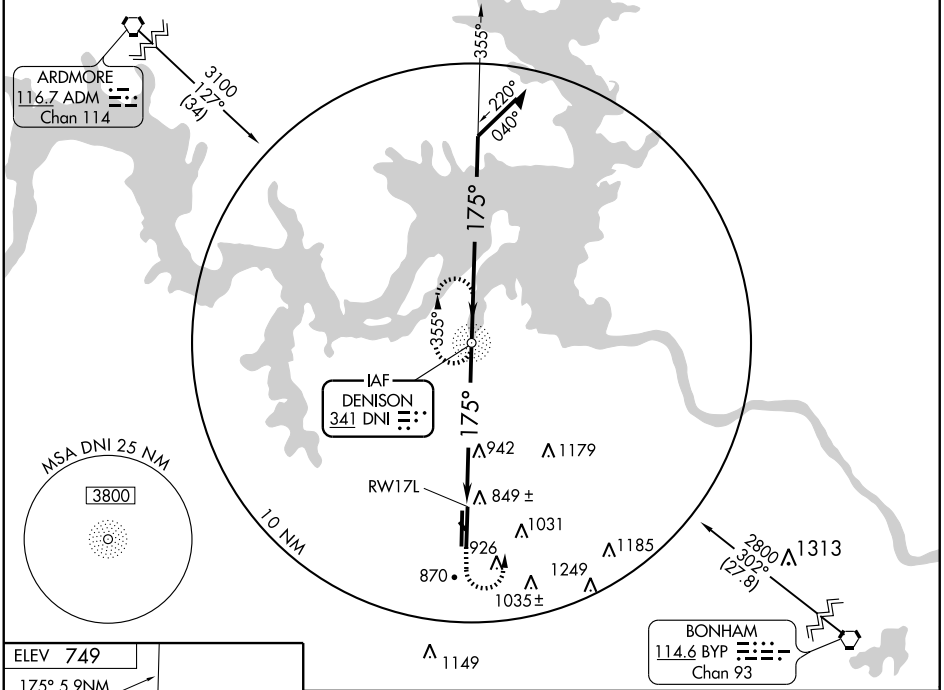
# NDB or GPS RWY 17L

SHERMAN/DENISON/NORTH TEXAS RGNL (GYI)

NDB DNI <b>341</b>	APP CRS <b>175°</b>	Rwy Idg TDZE Apt Elev <b>9000</b> <b>741</b> <b>749</b>
-----------------------	------------------------	--

<b>NA</b> When local altimeter setting not received, use Dallas-Love Field altimeter setting.	<b>MALSR</b> 	<b>MISSED APPROACH:</b> Climb to 2000, then climbing left turn to 2500 direct DNI NDB and hold.
--	------------------	---

<b>AWOS-3</b> <b>118.775</b>	<b>FORT WORTH CENTER</b> <b>124.75 377.1</b>	<b>NORTH TEXAS RGNL</b> ★ <b>120.575 (CTAF) 233.7</b>	<b>GND CON</b> <b>124.125</b>	<b>UNICOM</b> <b>122.7</b>
---------------------------------	---	--	----------------------------------	-------------------------------



CATEGORY	A		B		C		D	
	1	2	1	2	1	2	1	2
S-17L	1300- <sup>3</sup> / <sub>4</sub>	559 (600- <sup>3</sup> / <sub>4</sub> )	1300-1	559 (600-1)	1300-1 <sup>1</sup> / <sub>2</sub>	559 (600-1 <sup>1</sup> / <sub>2</sub> )	1300-1 <sup>1</sup> / <sub>2</sub>	559 (600-1 <sup>1</sup> / <sub>2</sub> )
CIRCLING	1300-1	551 (600-1)	1300-1 <sup>1</sup> / <sub>2</sub>	551 (600-1 <sup>1</sup> / <sub>2</sub> )	1400-2	651 (700-2)	1400-2	651 (700-2)
<b>DALLAS-LOVE FIELD ALTIMETER SETTING MINIMUMS</b>								
S-17L	1460- <sup>3</sup> / <sub>4</sub>	719 (800- <sup>3</sup> / <sub>4</sub> )	1460-1 <sup>1</sup> / <sub>2</sub>	719 (800-1 <sup>1</sup> / <sub>2</sub> )	1460-2	719 (800-2)	1460-2	719 (800-2)
CIRCLING	1460-1	711 (800-1)	1460-2	711 (800-2)	1540-2 <sup>1</sup> / <sub>2</sub>	791 (800-2 <sup>1</sup> / <sub>2</sub> )	1540-2 <sup>1</sup> / <sub>2</sub>	791 (800-2 <sup>1</sup> / <sub>2</sub> )

SC-2, 22 OCT 2009 to 19 NOV 2009

SC-2, 22 OCT 2009 to 19 NOV 2009