

ILS or LOC RWY 17L

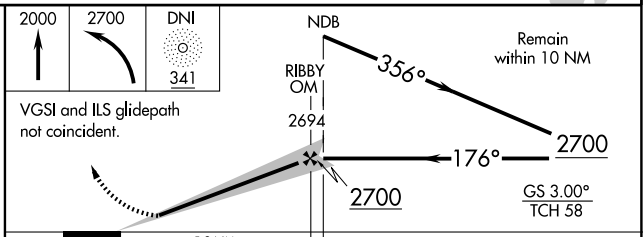
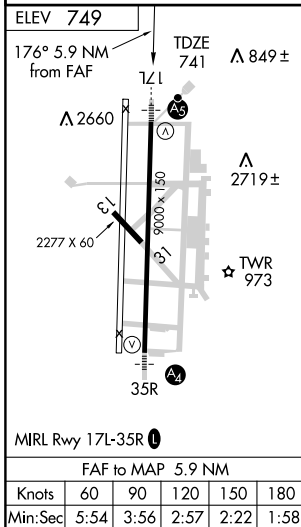
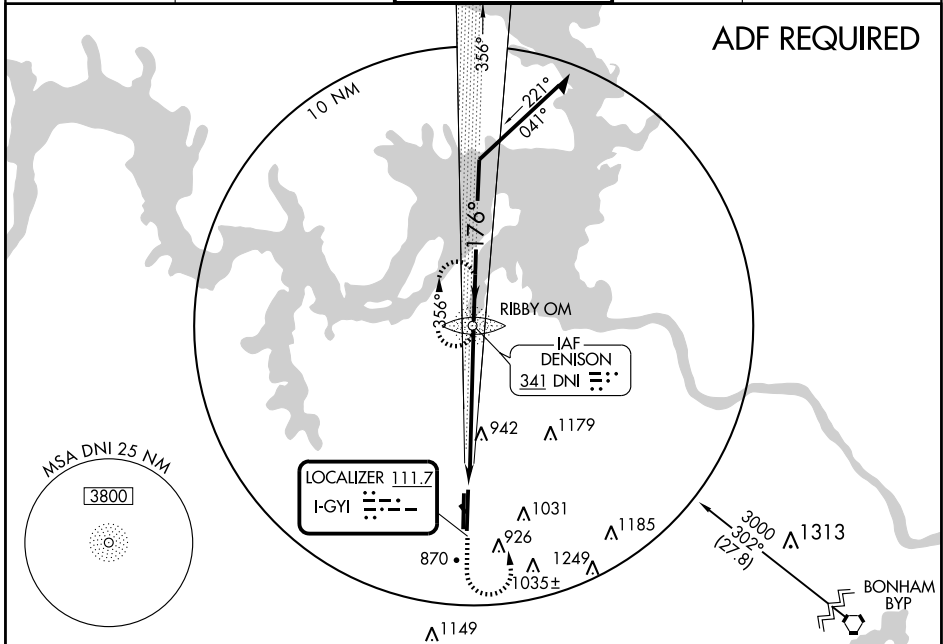
SHERMAN/DENISON/NORTH TEXAS RGNL (GYI)

LOC I-GYI 111.7	APP CRS 176°	Rwy Idg 9000
		TDZE 741
		Apt Elev 749

NA When local altimeter setting not received, use Dallas-Love Field altimeter setting. For inoperative MALSR increase S-ILS 17L visibility to 1 1/4.

MALSR
MISSED APPROACH: Climb to 2000, then climbing left turn to 2700 direct DNI NDB and hold.

AWOS-3 118.775	FORT WORTH CENTER 124.75 377.1	NORTH TEXAS RGNL ★ 120.575 (CTAF) 233.7	GND CON 124.125	UNICOM 122.7
--------------------------	------------------------------------------	---------------------------------------------------	---------------------------	------------------------



CATEGORY	A	B	C	D
S-ILS 17L	941-1/2 200 (200-1/2)			
S-LOC 17L	1240-1/2	499 (500-1/2)	1240-3/4 499 (500-3/4)	1240-1 499 (500-1)
CIRCLING	1280-1	531 (600-1)	1280-1 1/2 531 (600-1 1/2)	1400-2 651 (700-2)
DALLAS-LOVE FIELD ALTIMETER SETTING MINIMUMS				
S-ILS 17L	1099-3/4 358 (400-3/4)			
S-LOC 17L	1400-1/2	659 (700-1/2)	1400-1 1/4 659 (700-1 1/4)	1400-1 1/2 659 (700-1 1/2)
CIRCLING	1440-1 1/4	691 (700-1 1/4)	1440-2 691 (700-2)	1540-2 1/2 791 (800-2 1/2)

ILS or LOC RWY 17L

SC-2, 22 OCT 2009 to 19 NOV 2009

SC-2, 22 OCT 2009 to 19 NOV 2009