

RNAV (GPS) RWY 14

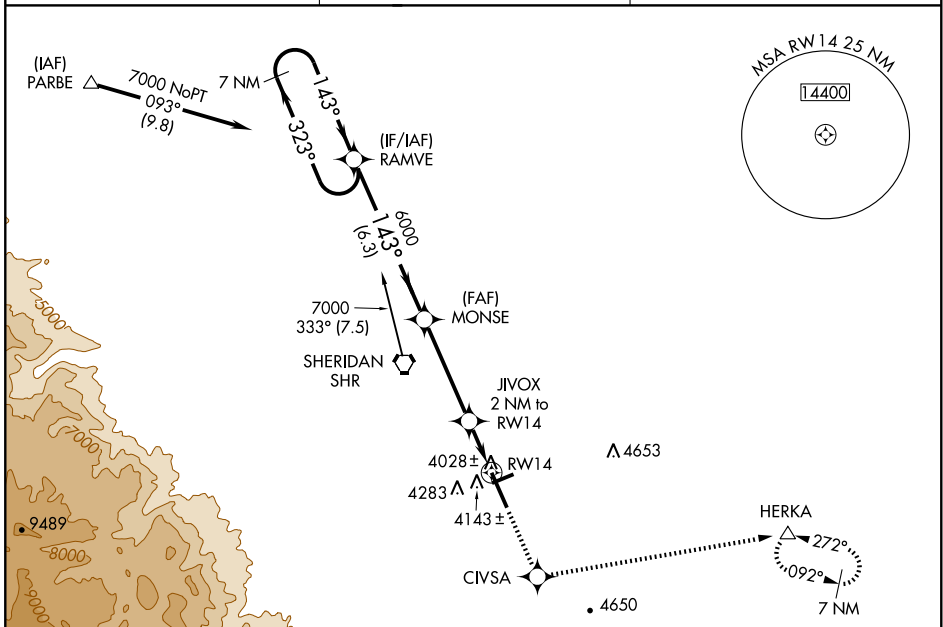
SHERIDAN COUNTY (SHR)

WAAS CH 81899 W14A	APP CRS 143°	Rwy Idg 8300 TDZE 4014 Apt Elev 4021
--	------------------------	---

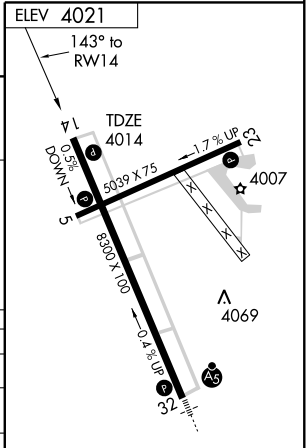
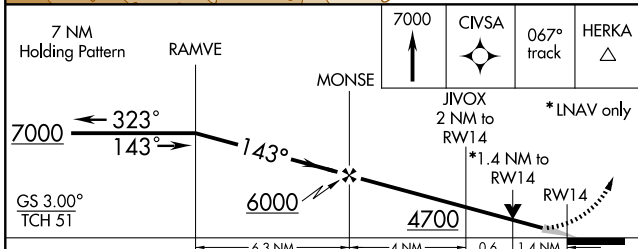
▽ DME/DME RNP -0.3 NA.
△ Baro-VNAV NA below -23°C (-9°F).
 When VGSI inoperative, circling Rwy 5 and 23 NA at night.
 If local altimeter setting not received, procedure NA.

MISSED APPROACH: Climb to 7000 direct CIVSA and via 067° track to HERKA and hold, continue climb-in-hold to 7000.

ASOS 135.175	SALT LAKE CENTER 127.75 351.9	UNICOM 123.0 (CTAF) 0
------------------------	---	---------------------------------



7 NM Holding Pattern	RAMVE	MONSE	CIVSA	HERKA
----------------------	-------	-------	-------	-------



CATEGORY	A	B	C	D
LPV DA		4264- ³ / ₄	250 (300- ³ / ₄)	
LNAV/VNAV DA		4419-1 ¹ / ₂	405 (400-1 ¹ / ₂)	
LNAV MDA	4500-1	486 (500-1)	4500-1 ¹ / ₂ 486 (500-1 ¹ / ₂)	4500-1 ¹ / ₂ 486 (500-1 ¹ / ₂)
CIRCLING	4580-1 ¹ / ₂ 559 (600-1 ¹ / ₂)	4600-1 ¹ / ₂ 579 (600-1 ¹ / ₂)	4620-1 ¹ / ₂ 599 (600-1 ¹ / ₂)	4740-2 ¹ / ₄ 719 (800-2 ¹ / ₄)

HIRL Rwy 14-32 **0**
 MIRL Rwy 5-23 **0**
 REIL Rws 5, 14, and 23 **0**

NW-1, 22 OCT 2009 to 19 NOV 2009

NW-1, 22 OCT 2009 to 19 NOV 2009