

VOR/DME JYU 113.6 Chan 83	APP CRS 325°	Rwy Idg TDZE Apt Elev	8002 165 166
---	------------------------	-----------------------------	---

VOR RWY 33
SELMA/CRAIG FIELD (SEM)

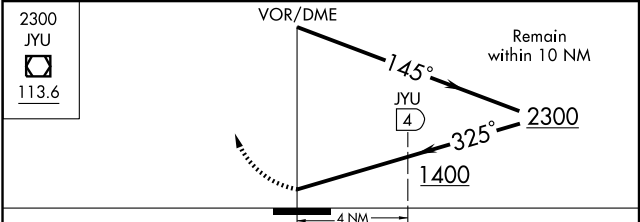
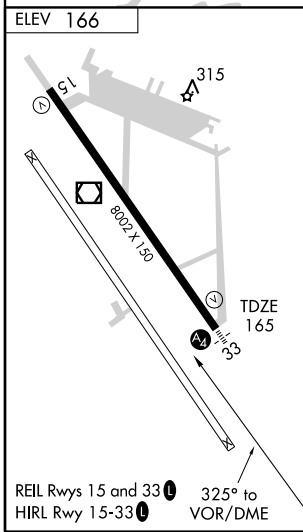
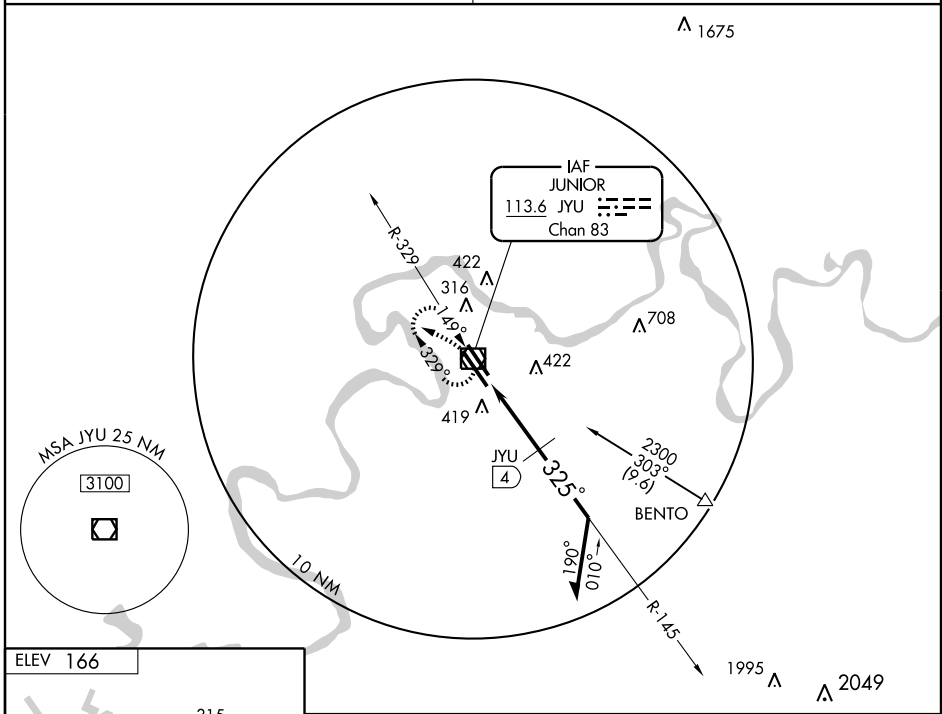
Use Montgomery altimeter setting.
 ▲ NA VOR MINIMUMS: Inoperative table does not apply.
 DME MINIMUMS: Inoperative table does not apply to CATs C and D.

MALS


MISSED APPROACH: Climb to 2300 in JYU VOR/DME holding pattern.

MONTGOMERY APP CON ★
124.0 363.025

UNICOM
122.7 (CTAF) 1



CATEGORY	A	B	C	D
S-33	1400-1¼ 1235 (1300-1¼)	1400-1½ 1235 (1300-1½)	1400-3	1235 (1300-3)
CIRCLING	1400-1¼ 1234 (1300-1¼)	1400-1½ 1234 (1300-1½)	1400-3	1234 (1300-3)
DME MINIMUMS				
S-33	760-¾ 595 (600-¾)	760-1½ 595 (600-1½)	760-1¾ 595 (600-1¾)	760-1¾ 595 (600-1¾)
CIRCLING	800-1 634 (700-1)	800-1¾ 634 (700-1¾)	800-2 634 (700-2)	800-2 634 (700-2)

SE-4, 22 OCT 2009 to 19 NOV 2009

SE-4, 22 OCT 2009 to 19 NOV 2009