

SELMA, ALABAMA

AL-387 (FAA)

VOR/DME JYU 113.6 Chan 83	APP CRS 154°	Rwy Idg TDZE 166 Apt Elev 166	8002
---	------------------------	---	-------------

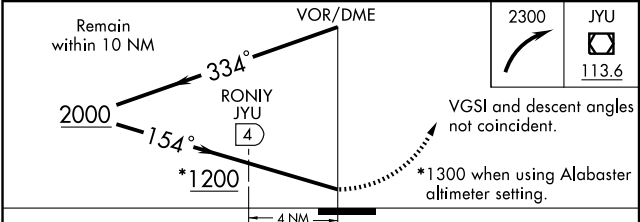
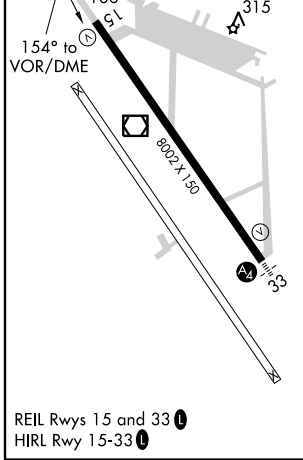
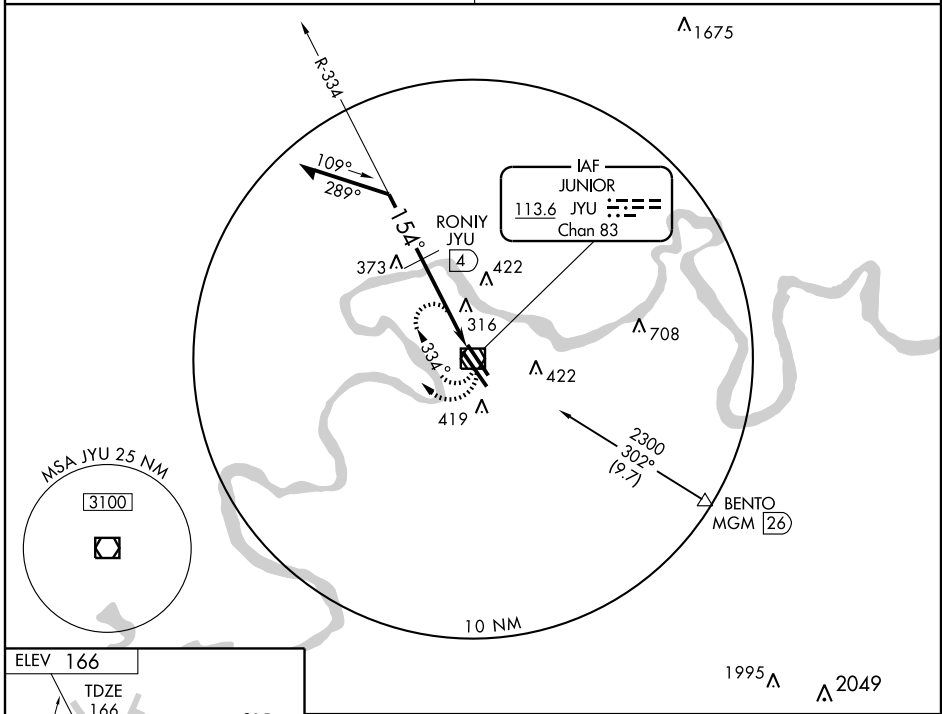
VOR RWY 15
SELMA/ CRAIG FIELD (SEM)

▼ Visibility reduction by helicopters NA.
▲ NA Use Montgomery altimeter setting; if not received, use Alabaster altimeter setting and increase all MDAs 100 feet.

MISSED APPROACH: Climbing right turn to 2300 in JYU VOR/DME holding pattern, continue climb-in-hold to 2300.

MONTGOMERY APP CON ★
124.0 363.025

UNICOM
122.7 (CTAF) 0



CATEGORY	A	B	C	D
S-15	1200-1¼ 1034 (1100-1¼)	1200-1½ 1034 (1100-1½)	1200-3	1034 (1100-3)
CIRCLING	1200-1¼ 1034 (1100-1¼)	1200-1½ 1034 (1100-1½)	1200-3	1034 (1100-3)
RONIY FIX MINIMUMS				
S-15	660-1	494 (500-1)	660-1¼ 494 (500-1¼)	660-1½ 494 (500-1½)
CIRCLING	800-1	634 (700-1)	800-1¾ 634 (700-1¾)	800-2 634 (700-2)

SELMA, ALABAMA
Amdt 1 08325

32° 21' N - 86° 59' W

SELMA/CRAIG FIELD (SEM)
VOR RWY 15

SE-4, 22 OCT 2009 to 19 NOV 2009

SE-4, 22 OCT 2009 to 19 NOV 2009