

SELMA, ALABAMA

AL-387 (FAA)

WAAS CH <b>90205</b> <b>W33A</b>	APP CRS <b>327°</b>	Rwy Idg <b>8002</b> TDZE <b>165</b> Apt Elev <b>166</b>
--	------------------------	---

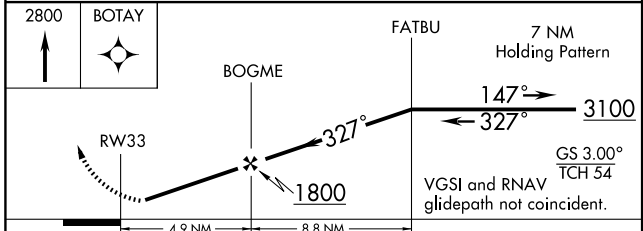
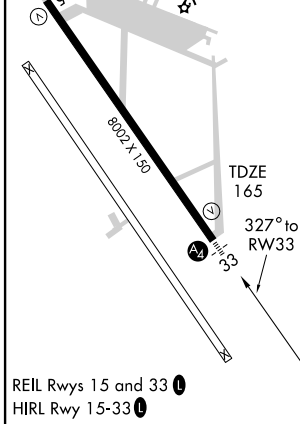
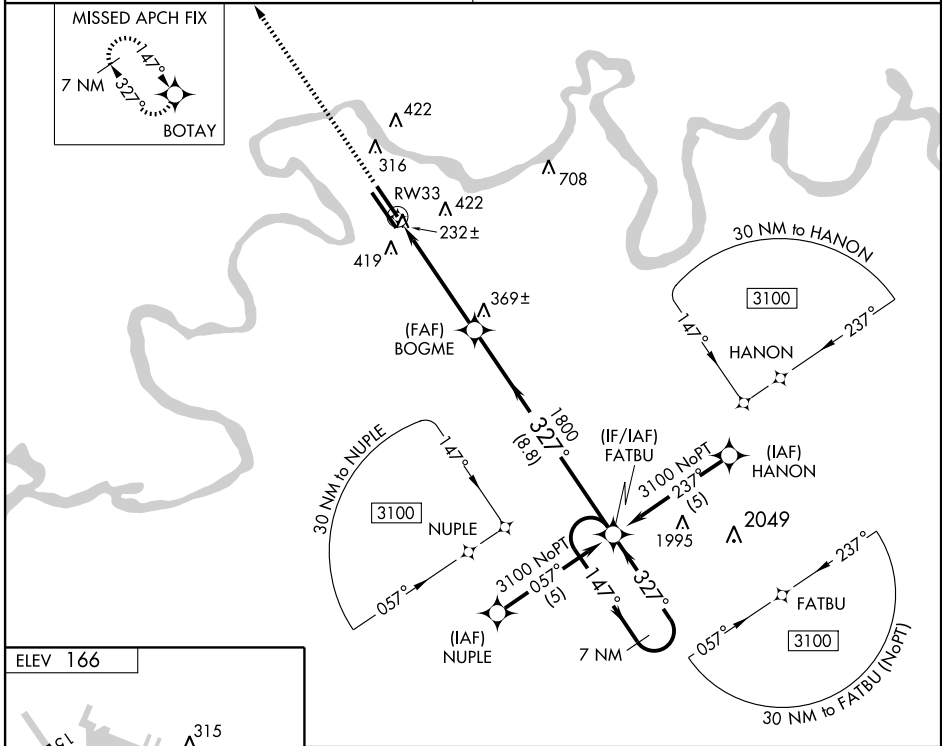
# RNAV (GPS) RWY 33

SELMA/CRAIG FIELD (SEM)

**⚠** Inoperative table does not apply to LNAV Cat C, Baro-VNAV NA  
**⚠** DME/DME RNP-0.3 NA. Visibility reduction by helicopters NA.  
**⚠** Use Montgomery altimeter setting; if not received, use Alabaster altimeter setting and increase LPV DA to 627'; LNAV/VNAV DA to 804'; increase all MDAs 100'.

**MALS**  
**⚠** MISSED APPROACH:  
 Climb to 2800 direct  
 BOTAY and hold.

MONTGOMERY APP CON* <b>124.0 363.025</b>	UNICOM <b>122.7 (CTAF)</b>
---	-------------------------------



CATEGORY	A	B	C	D
LPV DA	528-1¼ 363 (400-1¼)			
LNAV/DA VNAV	705-2 540 (600-2)			
LNAV MDA	640-¾	475 (500-¾)	640-1¼ 475 (500-1¼)	640-1½ 475 (500-1½)
CIRCLING	800-1	634 (700-1)	800-1¾ 634 (700-1¾)	800-2 634 (700-2)

SELMA, ALABAMA  
 Orig 08325

32° 21' N - 86° 59' W

# RNAV (GPS) RWY 33

SE-4, 22 OCT 2009 to 19 NOV 2009

SE-4, 22 OCT 2009 to 19 NOV 2009