

RNAV (GPS) RWY 15

SELMA/ CRAIG FIELD (SEM)

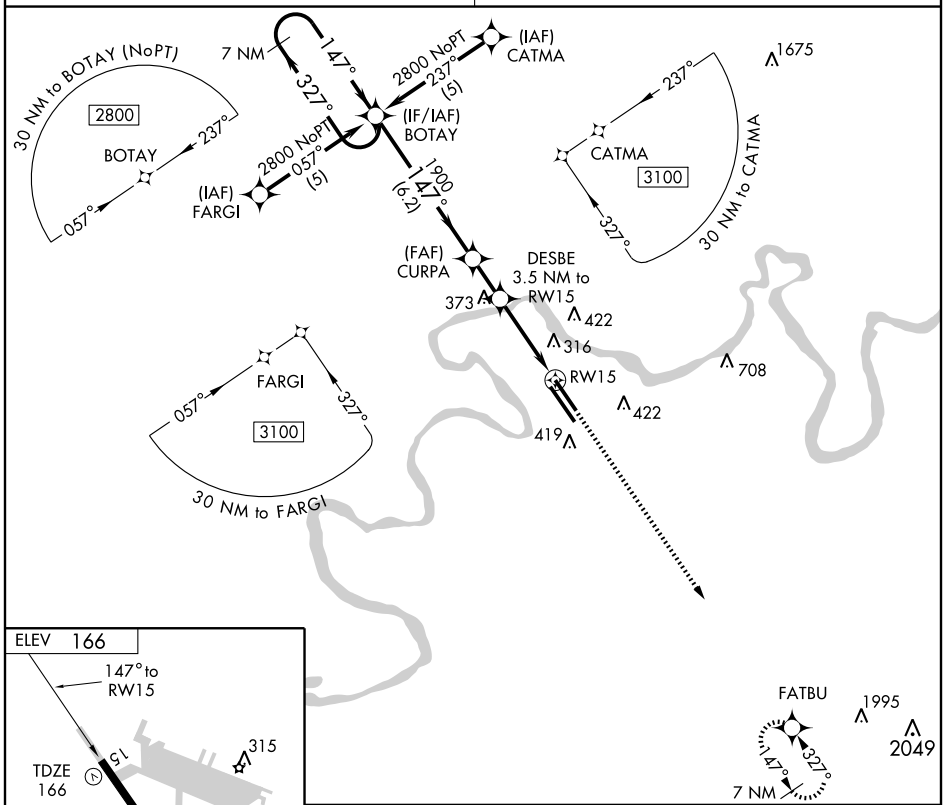
APP CRS	Rwy Idg	8002
147°	TDZE	166
	Apt Elev	166

T DME/DME RNP-0.3 NA.
 Visibility reduction by helicopters NA.
Δ NA Use Montgomery altimeter setting; if not received, use Alabaster altimeter setting and increase all MDAs 100 feet.

MISSED APPROACH: Climb to 3100 direct FATBU and hold.

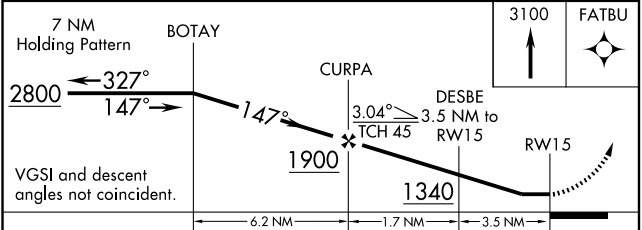
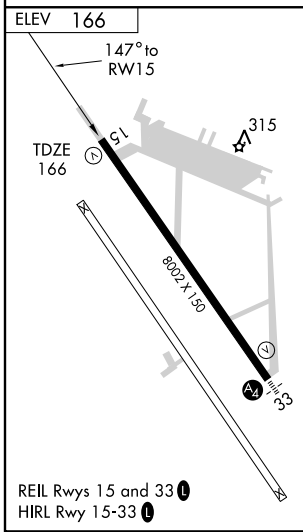
MONTGOMERY APP CON ★
124.0 363.025

UNICOM
122.7 (CTAF) 0



SE-4, 22 OCT 2009 to 19 NOV 2009

SE-4, 22 OCT 2009 to 19 NOV 2009



CATEGORY	A	B	C	D
LNVA MDA	640-1	474 (500-1)	640-1¼ 474 (500-1¼)	640-1½ 474 (500-1½)
CIRCLING	800-1	634 (700-1)	800-1¾ 634 (700-1¾)	800-2 634 (700-2)