

SELMA, ALABAMA

AL-387 (FAA)

# NDB RWY 33

SELMA/CRAIG FIELD (SEM)

LOM SE <b>344</b>	APP CRS <b>326°</b>	Rwy Idg <b>8002</b>
		TDZE <b>165</b>
		Apt Elev <b>166</b>

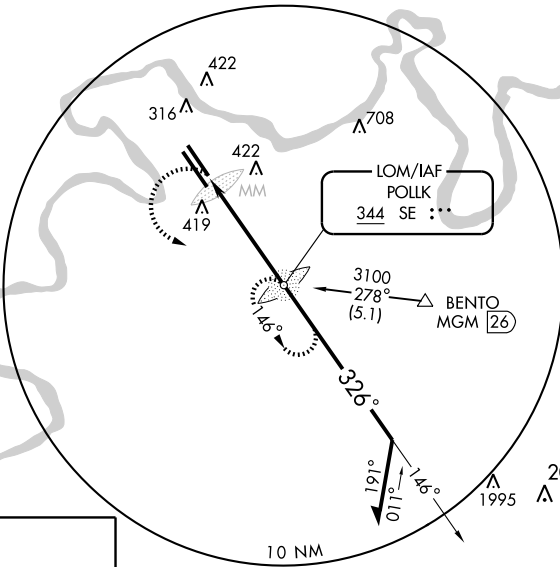
**▼** Inoperative table does not apply to S-33 Cat. C.  
 Visibility reduction by helicopters NA.  
**▲ NA** Use Montgomery altimeter setting; if not received, use Alabaster altimeter setting and increase all MDAs 100 feet.



**MISSED APPROACH:** Climbing left turn to 3100 direct POLK LOM and hold, continue climb-in-hold to 3100.

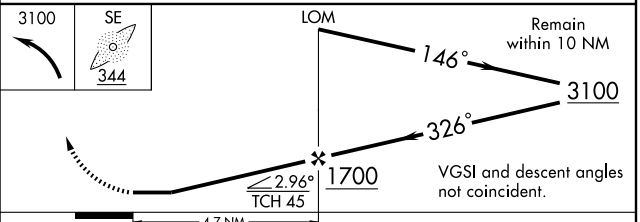
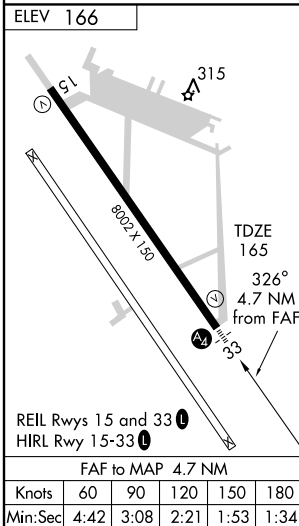
MONTGOMERY APP CON ★  
**124.0 363.025**

UNICOM  
**122.7 (CTAF) ①**



SE-4, 22 OCT 2009 to 19 NOV 2009

SE-4, 22 OCT 2009 to 19 NOV 2009



CATEGORY	A	B	C	D
S-33	800-3/4 635 (700-3/4)		800-1 3/4 635 (700-1 3/4)	800-2 635 (700-2)
CIRCLING	800-1 634 (700-1)		800-1 3/4 634 (700-1 3/4)	800-2 634 (700-2)

SELMA, ALABAMA  
 Amdt 4 08325

32° 21'N - 86° 59'W

SELMA/ CRAIG FIELD (SEM)  
**NDB RWY 33**