

ILS or LOC RWY 33

SELMA/CRAIG FIELD (SEM)

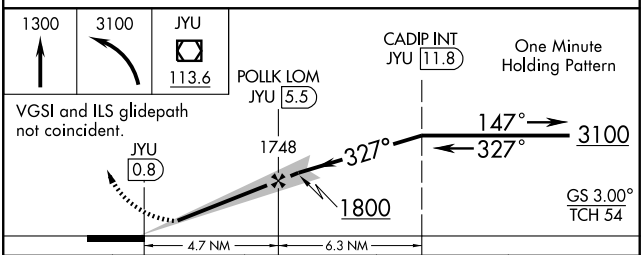
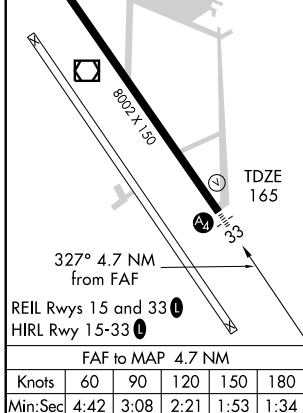
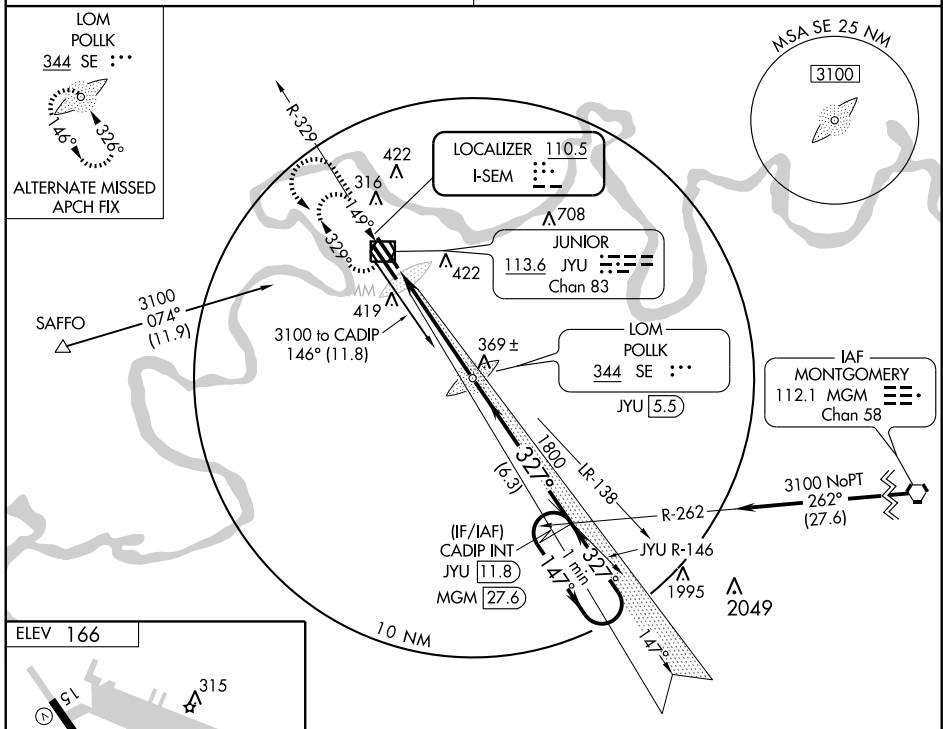
LOC I-SEM 110.5	APP CRS 327°	Rwy Idg 8002
		TDZE 165
		Apt Elev 166

Inoperative table does not apply to S-LOC 33 Cat. C.
 Visibility reduction by helicopters NA.
 Use Montgomery altimeter setting; if not received, use Alabaster altimeter setting and increase ILS DA to 592 feet: increase all MDAs 100 feet.

MALS MISSED APPROACH: Climb to 3100 then climbing left turn to 3100 direct JYU VOR/DME and hold, continue climb-in-hold to 3100.

MONTGOMERY APP CON ★
124.0 363.025

UNICOM
122.7 (CTAF) 1



CATEGORY	A	B	C	D
S-ILS 33	493-1 328 (400-1)			
S-LOC 33	700- ³ / ₄	535 (600- ³ / ₄)	700-1 ¹ / ₂ 535 (600-1 ¹ / ₂)	700-1 ³ / ₄ 535 (600-1 ³ / ₄)
CIRCLING	800-1	634 (700-1)	800-1 ³ / ₄ 634 (700-1 ³ / ₄)	800-2 634 (700-2)

SE-4, 22 OCT 2009 to 19 NOV 2009

SE-4, 22 OCT 2009 to 19 NOV 2009