

WAAS CH 40311 W36A	APP CRS 005°	Rwy Idg TDZE Apt Elev	5234 62 62
--	------------------------	-----------------------------	---------------------------------------

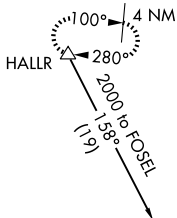
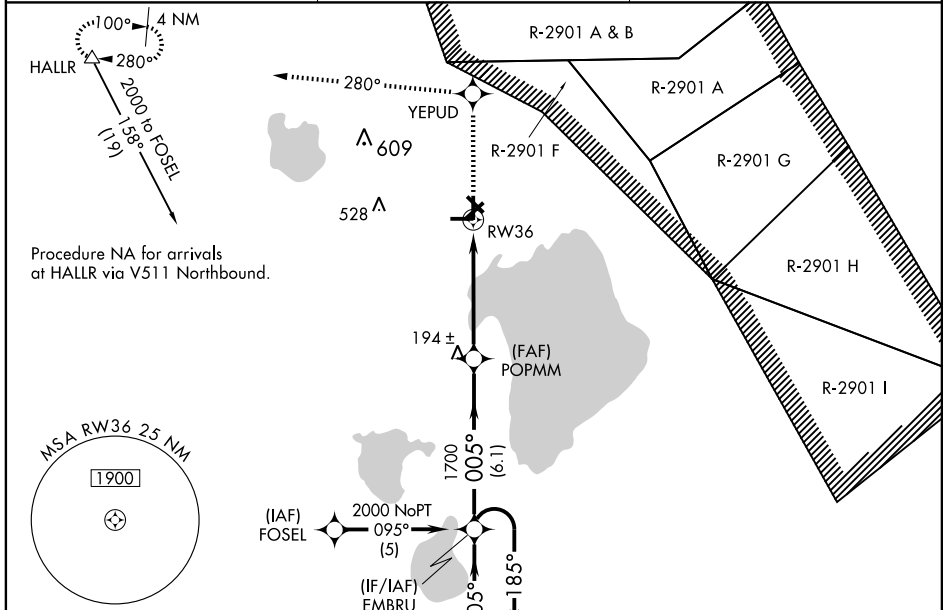
RNAV (GPS) Z RWY 36

SEBRING RGNL (SEF)

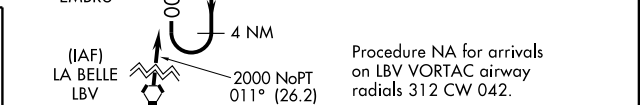
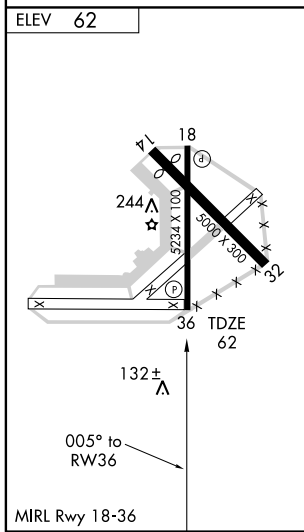
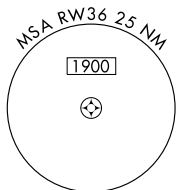
⚠ Baro-VNAV NA when using Vero Beach Muni altimeter setting. For uncompensated Baro-VNAV systems, LNAV/VNAV NA below -15°C (5°F) or above 48°C (118°F). DME/DME RNP-0.3 NA. Visibility reduction by helicopters NA. When local altimeter setting not received, use Vero Beach Muni altimeter setting and increase LPV DA to 497, LNAV/VNAV DA to 524, increase all MDA 140 feet, increase LPV all Cats. visibility ½ mile, LNAV/VNAV all Cats. visibility ½ mile, increase LNAV Cat. C and D visibility ½ mile, increase Circling Cat. C and D visibility ¼ mile.

MISSED APPROACH: Climb to 2000 direct YEPUD and via 280° track to HALLR and hold.

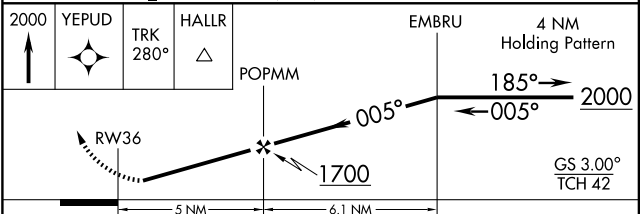
AWOS-3 119.475	MIAMI CENTER 127.2 349.0	UNICOM 122.7 (CTAF)
--------------------------	------------------------------------	-------------------------------



Procedure NA for arrivals at HALLR via V511 Northbound.



Procedure NA for arrivals on LBV VORTAC airway radials 312 CW 042.



CATEGORY	A	B	C	D
LPV DA	375-1¼		313 (400-1¼)	
LNAV/VNAV DA	402-1¼		340 (400-1¼)	
LNAV MDA	540-1	478 (500-1)	540-1¼ 478 (500-1¼)	540-1½ 478 (500-1½)
CIRCLING	600-1	538 (600-1)	600-1½ 538 (600-1½)	620-2 558 (600-2)

SE-3, 22 OCT 2009 to 19 NOV 2009

SE-3, 22 OCT 2009 to 19 NOV 2009