

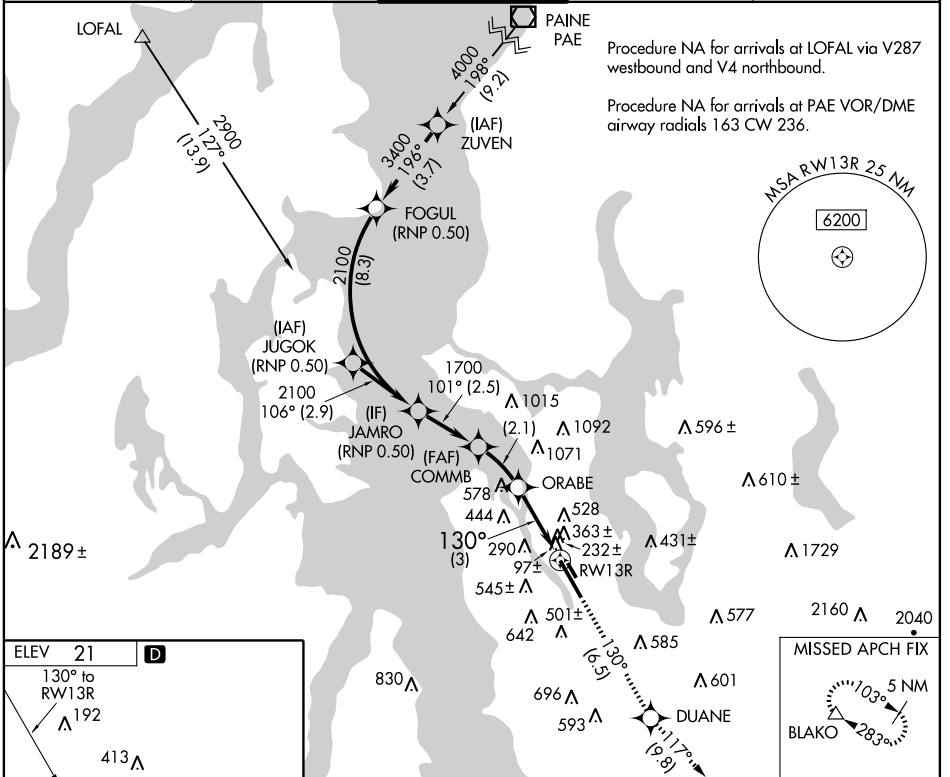
# RNAV (RNP) Z RWY 13R

SEATTLE/ BOEING FIELD/KING COUNTY INTL (BFI)

APP CRS <b>130°</b>	Rwy Idg <b>9120</b>
	TDZE <b>18</b>
	Apt Elev <b>21</b>

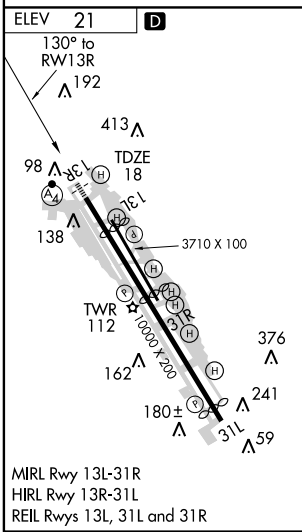
<p><b>▼</b> GPS and RF required. For uncompensated Baro-VNAV systems, procedure NA below -3°C (26°F) or above 48°C (119°F).  <b>▲</b> For inoperative MALSF, increase RNP 0.15 visibility to 1¼, RNP 0.30 to 2¼.</p>	<p><b>MALSF</b>  </p>	<p><b>MISSED APPROACH:</b> Climb to 2000 via 130° track to DUANE then climb to 6400 via 117° track to BLAKO and hold. Continue climb-in-hold to 6400.</p>
--	---------------------------	---

ATIS <b>127.75</b>	SEATTLE APP CON <b>119.2 284.7</b>	<b>BOEING TOWER</b> <b>120.6 257.8</b>	GND CON <b>121.9</b>	CLNC DEL <b>132.4</b>
-----------------------	---------------------------------------	---	-------------------------	--------------------------



NW-1, 22 OCT 2009 to 19 NOV 2009

NW-1, 22 OCT 2009 to 19 NOV 2009



JAMRO	COMMB	ORABE	DUANE	BLAKO
2100	1700	1031	2000	6400
Procedure Turn NA	1700	130°	130°	117°
GP 3.00°	VGS1 and RNAV glidepath not coincident.			
TCH 50	RWY 13R			
	2.5 NM	2.1 NM	3 NM	
CATEGORY	A	B	C	D
RNP 0.15 DA	523-1½ 505 (600-1½)			
RNP 0.30 DA	637-2 619 (700-2)			
<b>SPECIAL AIRCRAFT &amp; AIRCREW AUTHORIZATION REQUIRED</b>				