

LOC/DME I-BFI 110.9 Chan 46	APP CRS 130°	Rwy Idg TDZE Apt Elev	9120 14 18
--	------------------------	-----------------------------	---------------------------------------

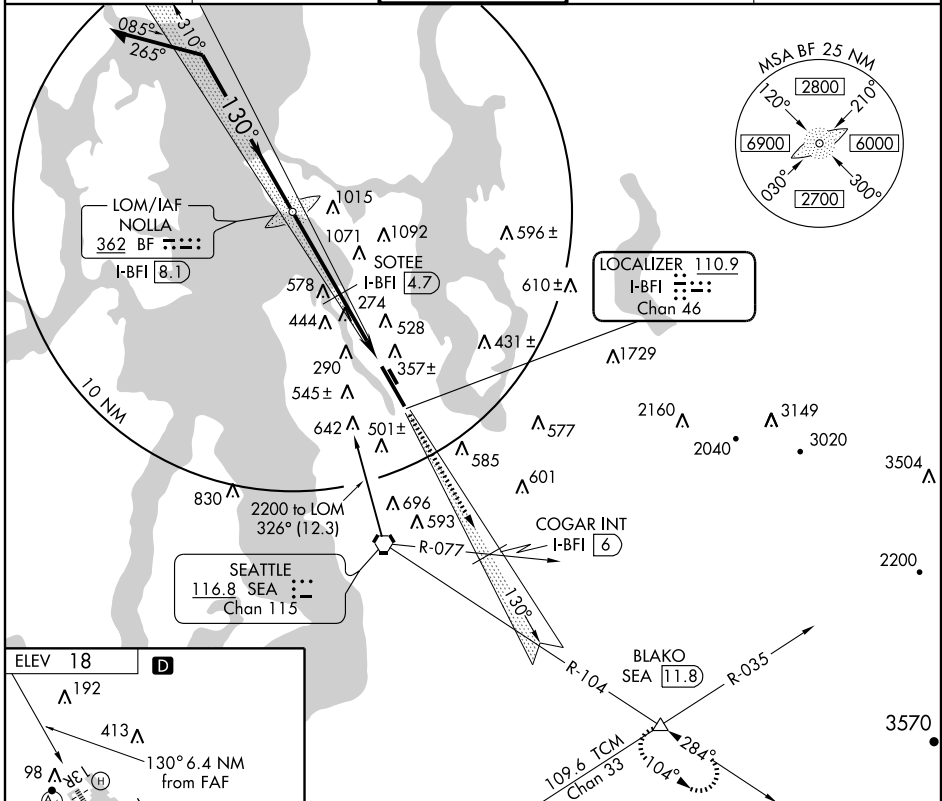
LOC/DME RWY 13R

SEATTLE/BOEING FIELD/KING COUNTY INTL (BFI)

⚠ Inoperative table does not apply.

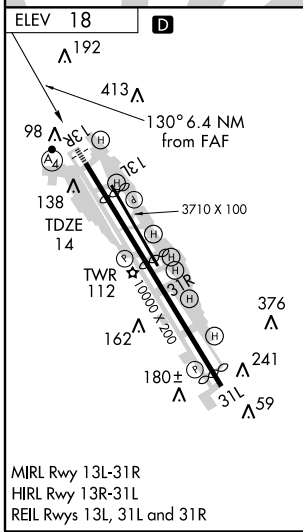
MALSF MISSED APPROACH: Climb to 2000 via I-BFI SE course to COGAR/I-BFI 6 DME, then continue climb to 5000 via I-BFI SE course and SEA R-104 to BLAKO Int/SEA 11.8 DME and hold.

ATIS 127.75	SEATTLE APP CON 119.2 284.7	BOEING TOWER 120.6 257.8	GND CON 121.9	CLNC DEL 132.4
-----------------------	---------------------------------------	---	-------------------------	--------------------------



NW-1, 22 OCT 2009 to 19 NOV 2009

NW-1, 22 OCT 2009 to 19 NOV 2009



Remain within 10 NM 2200 VGSi and descent angles not coincident.	NOLLA LOM I-BFI 8.1 2000 I-BFI SE CRS COGAR I-BFI 6 5000 I-BFI SE CRS SEA R-104 116.8 BLAKO Δ			
	SOTEE I-BFI 4.7 1080 3.15° TCH 75 I-BFI 1.7			
CATEGORY	A	B	C	D
S-LOC 13R	540/50	526 (600-1)	540-1½ 526 (600-1½)	540-1¾ 526 (600-1¾)
CIRCLING	780-1 762 (800-1)	840-1¼ 822 (900-1¼)	860-2½ 842 (900-2½)	960-3 942 (1000-3)