

ILS RWY 13R

SEATTLE/BOEING FIELD/KING COUNTY INTL (BFI)

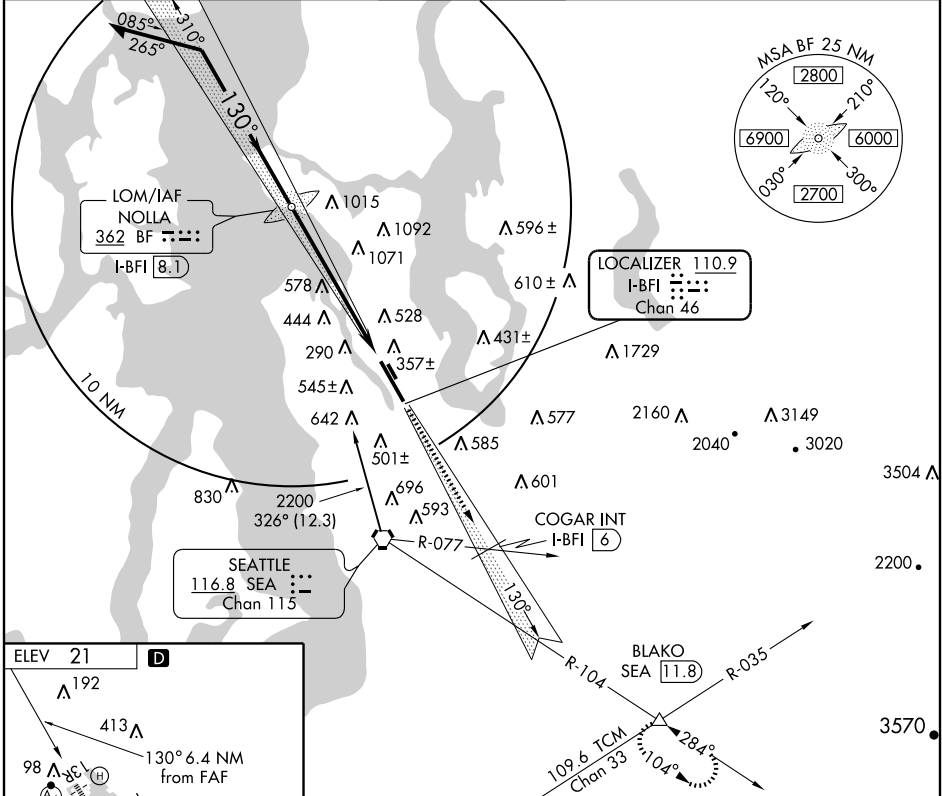
LOC/DME I-BFI 110.9 Chan 46	APP CRS 130°	Rwy Idg TDZE Apt Elev 9120 17 21
---	------------------------	--

⚠ Circling requires descent on GS to MDA.
⚠ Inoperative table does not apply.

MALSF

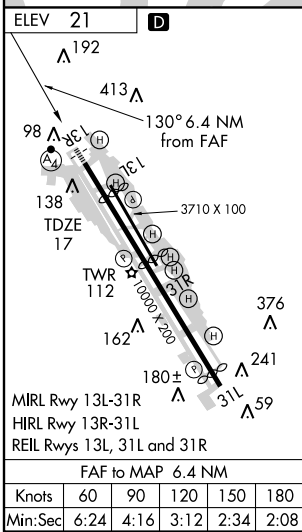
MISSED APPROACH: Climb to 2000 via I-BFI SE course to COGAR/I-BFI 6 DME/SEA R-077, then continue climb to 5000 via I-BFI SE course and SEA R-104 to BLAKO Int/SEA 11.8 DME and hold.

ATIS 127.75	SEATTLE APP CON 119.2 284.7	BOEING TOWER 120.6 257.8	GND CON 121.9	CLNC DEL 132.4
-----------------------	---------------------------------------	---	-------------------------	--------------------------



NW-1, 22 OCT 2009 to 19 NOV 2009

NW-1, 22 OCT 2009 to 19 NOV 2009



Remain within 10 NM	NOLLA LOM I-BFI 8.1	2000 I-BFI SE CRS	COGAR I-BFI 6	5000 I-BFI SE CRS	SEA R-104 116.8	BLAKO
						△
	2200	2117				
	GS 3.00° TCH 39	2200				
			6.4 NM			
CATEGORY	A	B	C	D		
S-ILS 13R	283/50 266 (300-1)					
CIRCLING	780-1 762 (800-1)	840-1¼ 822 (900-1¼)	900-2½ 879 (900-2½)	960-3 942 (1000-3)		

ILS RWY 13R