

VORTAC BFF 112.6 Chan 73	APP CRS 245°	Rwy Idg TDZE 3967 Apt Elev 3967
--	------------------------	---

SCOTTSLUFF/

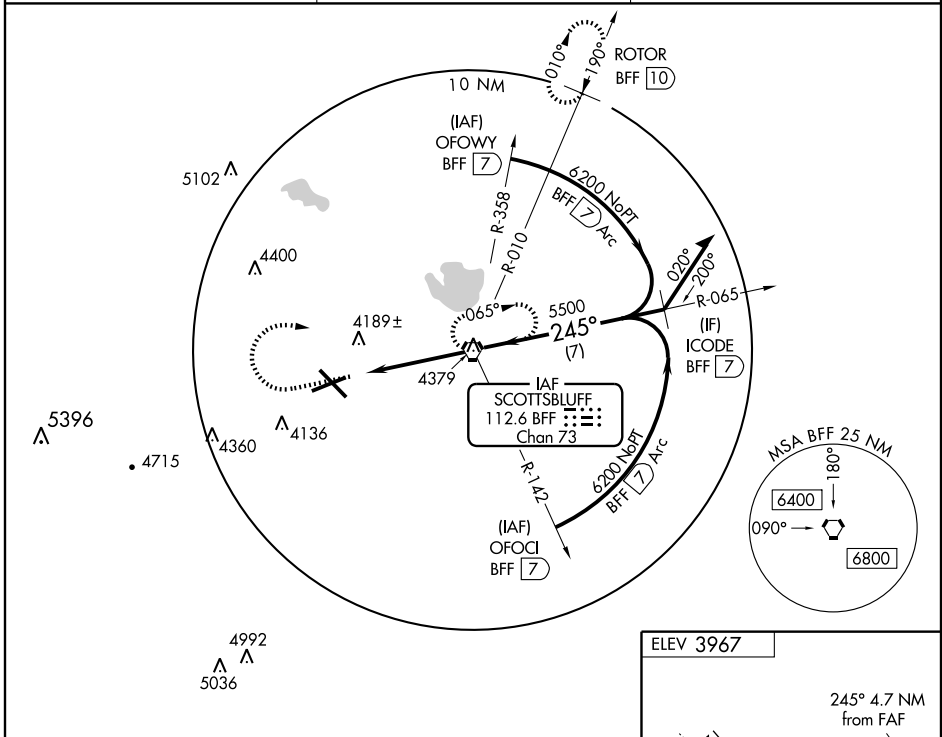
VOR or TACAN RWY 23

WESTERN NEBRASKA RGNL/WILLIAM B. HEILIG FIELD (BTF)

▼ If local altimeter setting not received, use Alliance altimeter setting and increase all MDAs 100 feet, increase S-23 CAT C/D visibilities ¼ mile, increase circling Cat C/D visibilities ¼ mile. VDP NA when using Alliance altimeter setting. Visibility reduction by helicopters NA.

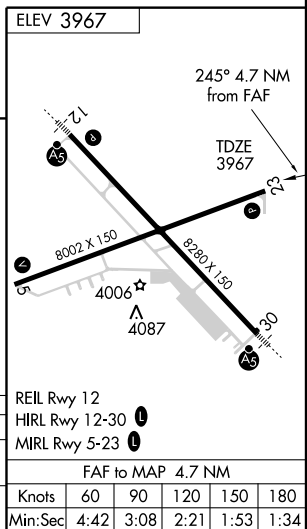
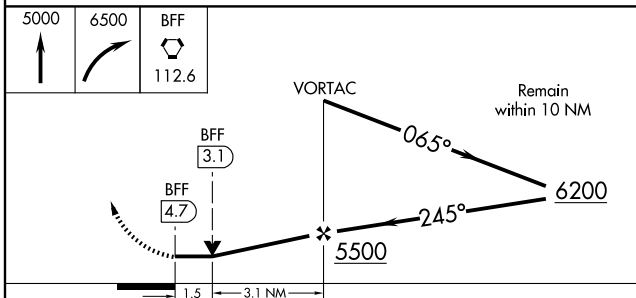
MISSED APPROACH: Climb to 5000 then climbing right turn to 6500 direct BFF VORTAC and hold (TACAN aircraft continue climb to 7300 via BFF R-010 to ROTOR 10 DME and hold north, right turn 190° inbound).

ASOS 121.025	DENVER CENTER 127.95 338.2	UNICOM 123.0 (CTAF) 0
------------------------	--------------------------------------	---------------------------------



NC-2, 22 OCT 2009 to 19 NOV 2009

NC-2, 22 OCT 2009 to 19 NOV 2009



CATEGORY	A	B	C	D
S-23	4500-1 533 (600-1)		4500-1½ 533 (600-1½)	4500-1¾ 533 (600-1¾)
CIRCLING	4500-1 533 (600-1)		4500-1½ 533 (600-1½)	4600-2 633 (700-2)

REIL Rwy 12
HIRL Rwy 12-30
MIRL Rwy 5-23

FAF to MAP 4.7 NM

Knots	60	90	120	150	180
Min:Sec	4:42	3:08	2:21	1:53	1:34

VOR or TACAN RWY 23