

RNAV (GPS) RWY 23

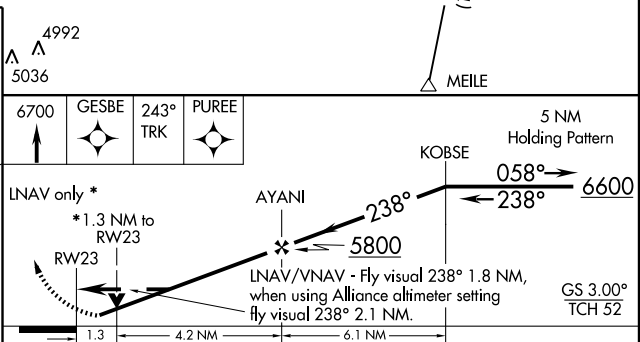
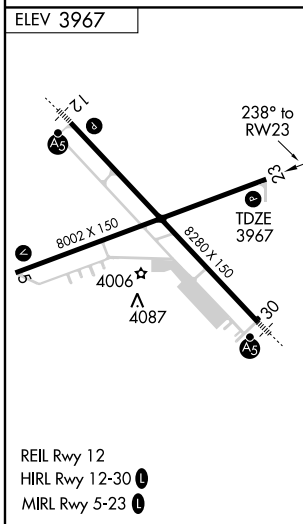
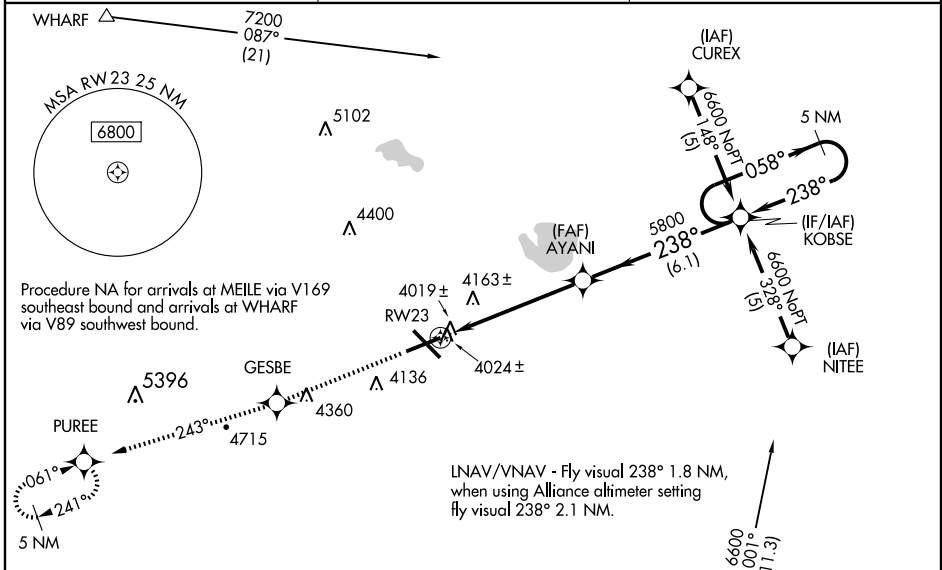
WAAS CH 45606 W23A	APP CRS 238°	Rwy Idg TDZE Apt Elev	8002 3967 3967
--	------------------------	-----------------------------	---

SCOTTSDLUFF/
WESTERN NEBRASKA RGNL/WILLIAM B. HEILIG FIELD (B'F'F')

⚠ When local altimeter not received, use Alliance altimeter setting and increase all DAs 91 feet and MDAs 100 feet. Increase all LPV visibilities ¼, increase RNAV Cat C/D visibilities ¼, increase circling Cat C/D visibilities ¼.
⚠ BARO-VNAV NA when using Alliance altimeter setting. For uncompensated BARO-VNAV systems, LNAV/VNAV NA below -22°C (-7°F) or above 41°C (105°F). VDP NA when using Alliance altimeter setting. Visibility reduction by helicopters NA. DME/DME RNP-0.3 NA.

MISSED APPROACH: Climb to 6700 direct GESBE and via 243° track to PUREE and hold.

ASOS 121.025	DENVER CENTER 127.95 338.2	UNICOM 123.0 (CTAF) 0
------------------------	--------------------------------------	---------------------------------



CATEGORY	A	B	C	D
LPV DA		4256-1	289 (300-1)	
LNAV/VNAV DA		4588-2	621 (700-2)	
LNAV MDA	4420-1	453 (500-1)	4420-1¼ 453 (500-1¼)	4420-1½ 453 (500-1½)
CIRCLING	4500-1	533 (600-1)	4500-1½ 533 (600-1½)	4600-2 633 (700-2)

RNAV (GPS) RWY 23

NC-2, 22 OCT 2009 to 19 NOV 2009

NC-2, 22 OCT 2009 to 19 NOV 2009