

RNAV (GPS) RWY 12

WAAS CH 73005 W12A	APP CRS 126°	Rwy Idg 8280 TDZE 3963 Apt Elev 3967
--	------------------------	---

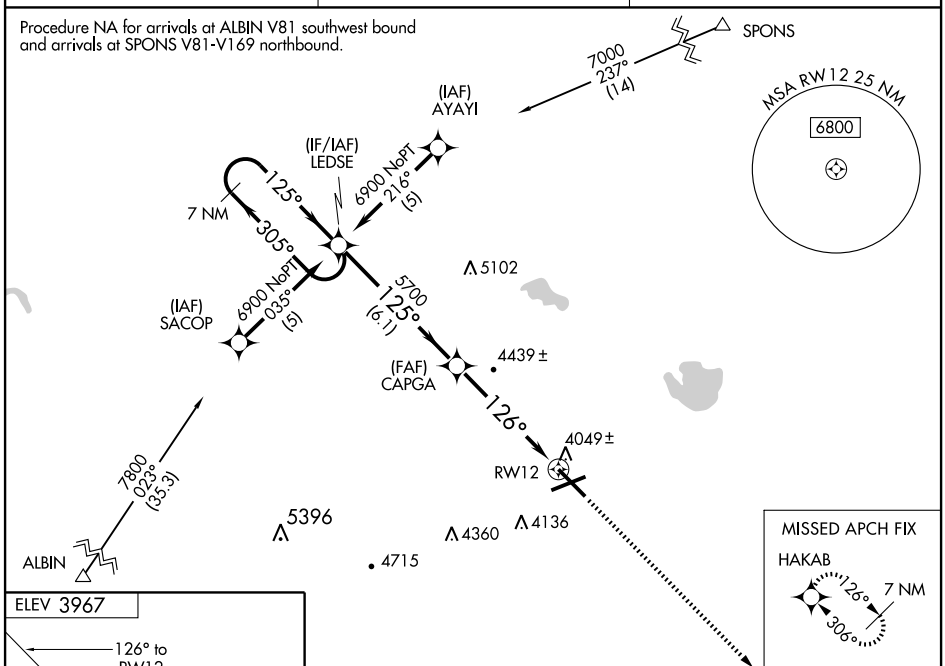
SCOTTSDLUFF/
WESTERN NEBRASKA RGNL/WILLIAM B. HEILIG FIELD (B'F'F')

▼ When local altimeter setting not received, use Alliance altimeter setting and increase all DAs 91 feet and all MDAs 100 feet; increase LPV, LNAV/VNAV, LNAV Cat A/B and circling Cat B visibilities ¼ mile; increase LNAV and circling Cat C/D visibilities ½ mile. For inoperative MALSR, when using Alliance altimeter setting, increase LPV all Cats visibility to ¼, and LNAV Cat A visibility to 1. For uncompensated BARO-VNAV systems, LNAV/VNAV NA below -22°C (-7°F) or above 41°C (105°F). BARO-VNAV NA when using Alliance altimeter setting. VDP NA when using Alliance altimeter setting. DME/DME RNP-0.3 NA.

MALSR

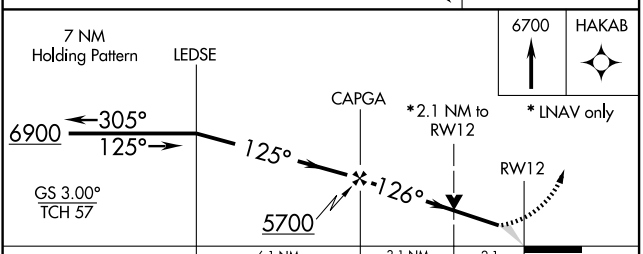
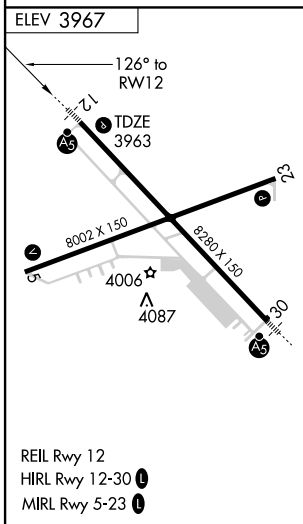
MISSED APPROACH:
Climb to 6700 direct HAKAB and hold.

ASOS 121.025	DENVER CENTER 127.95 338.2	UNICOM 123.0 (CTAF) 1
------------------------	--------------------------------------	---------------------------------



NC-2, 22 OCT 2009 to 19 NOV 2009

NC-2, 22 OCT 2009 to 19 NOV 2009



CATEGORY	A	B	C	D
LPV DA		4213-½	250 (300-½)	
LNAV/VNAV DA		4340-¾	377 (400-¾)	
LNAV MDA	4700-½	737 (800-½)	4700-1½ 737 (800-1½)	4700-1¾ 737 (800-1¾)
CIRCLING	4700-1	733 (800-1)	4700-2 733 (800-2)	4700-2¼ 733 (800-2¼)

RNAV (GPS) RWY 12